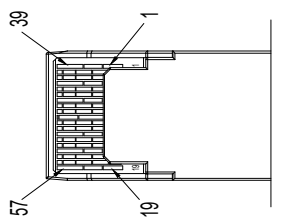
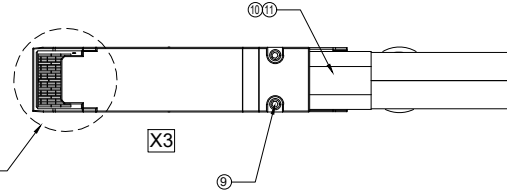
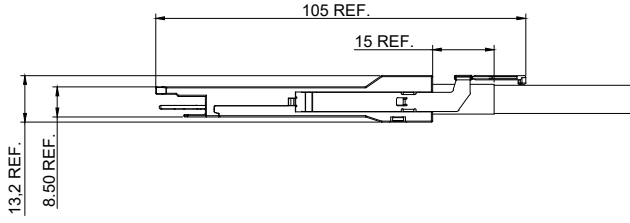
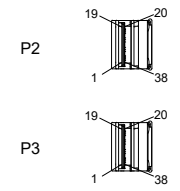
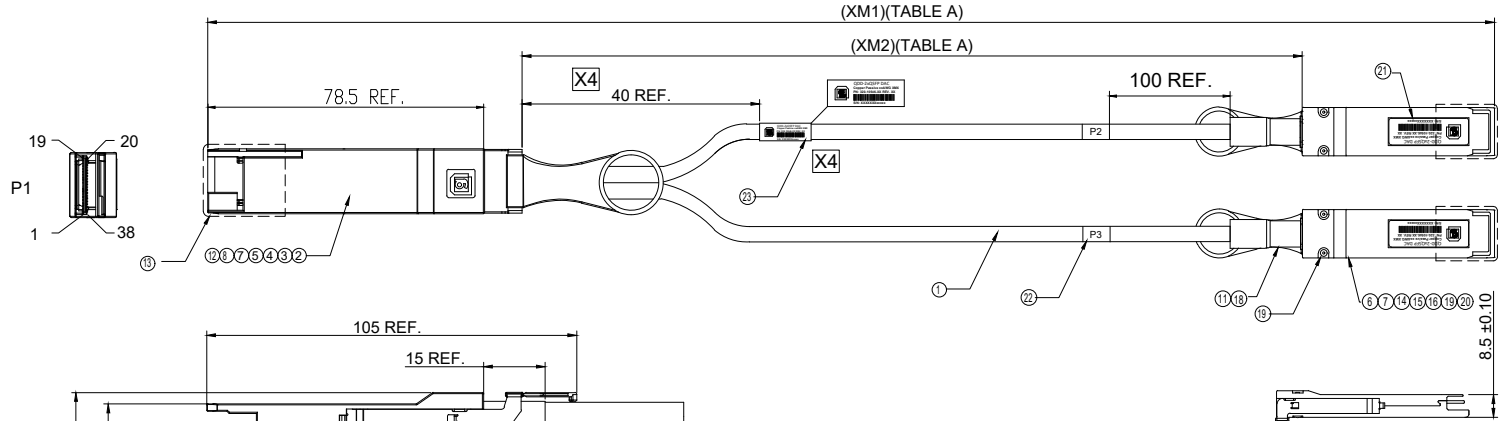


PROPRIETARY INFORMATION
COMPANY CONFIDENTIAL

REV.	ECN. NO.	DESCRIPTION	ENG	DATE
X1		INITIAL	Zakk	6/7/2022



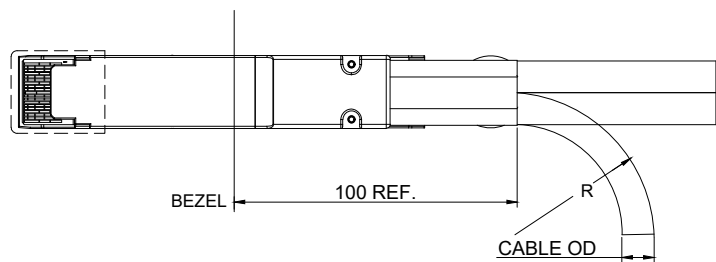
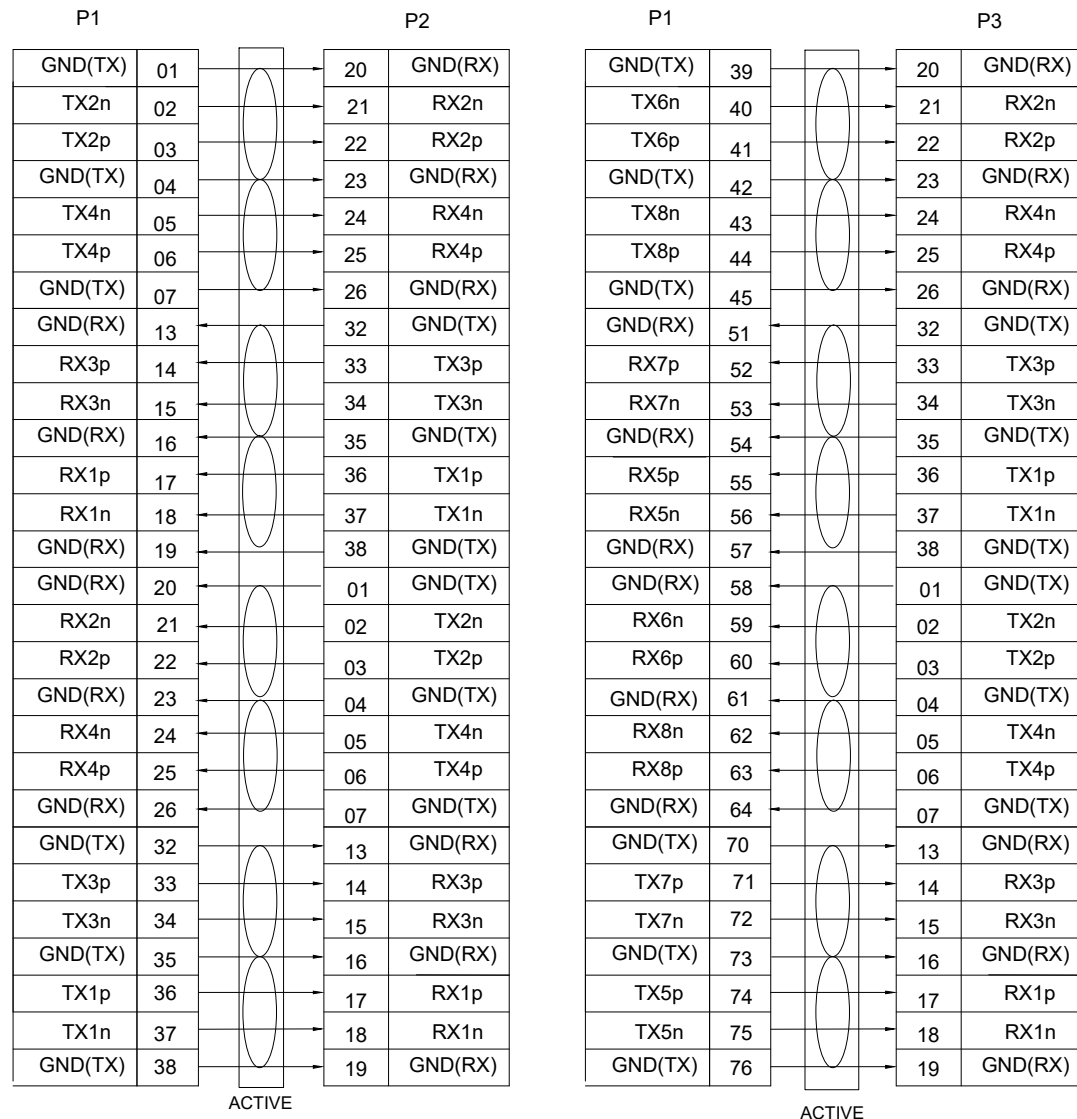
VIEW A
2 : 1

- NOTE(注释):
1. CABLE ASSEMBLY IMPEDANCE: 100±10 ohm.
成品特性阻抗: 100±10 欧姆
 2. 100% CONDUCTOR TEST, TEST CONDITION: VOLTAGE 5V, INSULATION RESISTANCE 10M ohm, CONDUCTION RESISTANCE MAX 3 ohm
100% 导通测试, 测试条件为电压5V, 绝缘10M欧姆, 导通电阻不大于3欧姆
 3. HIGH-FREQUENCY TEST ACCORDING TO IEEE802.3 STANDARD.
高频测试依照IEEE802.3标准测试
 4. ALL MATERIAL MUST COMPLY WITH ROHS
所有物料必须符合ROHS

GENERAL TOLERANCE X.± 0.50 .X± 0.20 .XX± 0.10 .XXX± 0.05	ANGLE TOLERANCE X°± 5.0° .X°± 3.0° .XX°± 2.0° .XXX°± 1.0°	DRAWN	DATE	
MATERIAL		CHECKED	DATE	
FINISH		APPROVED	DATE	PART NUMBER. 320-10546-XX
SCALE N/A	UNIT mm	SHEET 1 OF 4		DRAWING NO. 320-10546
				SIZE A4 REV. X5

WIRING TABLE

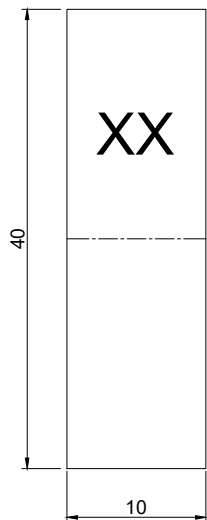
23	CABLE LABEL 2 (线标)	CABLE LABEL 2 48.3*79.2mm	1	X4
22	CABLE LABEL 1 (线标)	CABLE LABEL 1 10*40mm	2	
21	CONN. LABEL(壳标)	BACK SHELL LABEL, 9.6*23.5mm	2	X3 X4
20	INNER MOLD(内模)	HOT-MELT GLUE	2	
19	RIVET	ALUMINIUM ALLOY	4	
18	COPPER(铜管)	COPPER	2	
17	ZINC ALLOY FIXED TUBE(固定筒)	Zn ALLOY, PLATED Ni OVER Cu	2	
16	QSFP56 PASSIVE PCBA	QSFP+ PCB, 38P, Au 30u"Min	2	
15	QSFP56 BOTTOM SHELL	Zn ALLOY, PLATED Ni OVER Cu	2	
14	QSFP56 TOP SHELL	Zn ALLOY, PLATED Ni OVER Cu	2	
13	DUST COVER(防尘盖)	LDPE, NATURAL	3	
12	INNER MOLD(内模)	HOT-MELT GLUE	A/R	
11	HEAT SHRINKABLE TUBE(热缩套管)	HEAT SHRINKABLE TUBE(热缩套管)	A/R	
10	COPPER FOIL (铜箔)	6.35*0.07mm	A/R	
9	SCREW(螺丝)	SUS304	2	
8	QSFP SPRING(弹簧)	SUS301	4	
7	QSFP-DD SPRING(弹簧)	SWPB	2	
6	QSFP PULL TAB(拉带)	PA66 S1300, BLUE	2	
5	QSFP-DD PULL TAB(拉带)	PA66 S1300, BLACK	1	
4	BOTTOM SHELL(下壳)	Zn ALLOY, PLATED Ni OVER Cu	1	
3	TOP SHELL(上壳)	Zn ALLOY, PLATED Ni OVER Cu	1	
2	PCB ASSEMBLY(PCB 成品)	QSFPDD PCB, 38P, Au 30u"Min	1	
1	RAW CABLE(线材)	8PAIRS, BLACK, ROHS, SEE TABLE A	A/R	
ITEM	NAME	DESCRIPTION	QTY	



CABLE GAUGE	CABLE "OD"	STATIC BEND RADIUS"R"	DYNAMIC BEND RADIUS"R"
30AWG	6.7MM	33.5MM	67MM
26AWG	8.9MM	44.5MM	89MM
28AWG	7.9MM	39.5MM	79MM

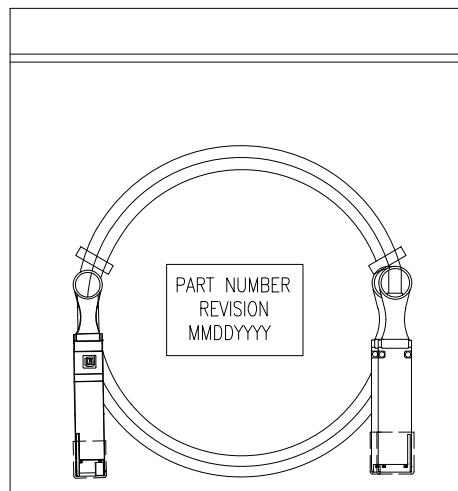
GENERAL TOLERANCE X± 0.50 .X± 0.20 .XX± 0.10 .XXX± 0.05	ANGLE TOLERANCE X°± 5.0° .X°± 3.0° .XX°± 2.0° .XXX°± 1.0°	DRAWN	DATE	
MATERIAL		CHECKED	DATE	
FINISH		APPROVED	DATE	
SCALE N/A	UNIT mm			
SHEET 2 OF 4				TITLE: QDD-2xQSFP DAC 112G Active 800G Spectra7 PART NUMBER: 320-10546-XX DRAWING NO. 320-10546 SIZE A4 REV. X5

② CABLE LABEL 1 (线标)



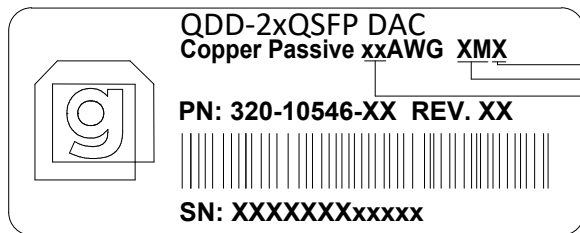
XX: P2, P3

PACKAGING:



PART NUMBER	WIRE TYPE	xx AWG	XM1 LENGTH	XM2 LENGTH
320-10546-01	PVC	30	500±20	
320-10546-02	PVC	30	1000±30	
320-10546-03	PVC	30	1500±30	

②① SHELL LABEL(壳标) AND
②③ CABLE LABEL 2 CONTENT:



GENERAL TOLERANCE X± 0.50 .X± 0.20 .XX± 0.10 .XXX± 0.05	ANGLE TOLERANCE X°± 5.0° .X°± 3.0° .XX°± 2.0° .XXX°± 1.0°	DRAWN	DATE	
MATERIAL		CHECKED	DATE	
FINISH		APPROVED		PART NUMBER 320-10546-XX
SCALE N/A	UNIT mm			DRAWING NO. 320-10546
SHEET 4 OF 4				SIZE A4 REV. X5