



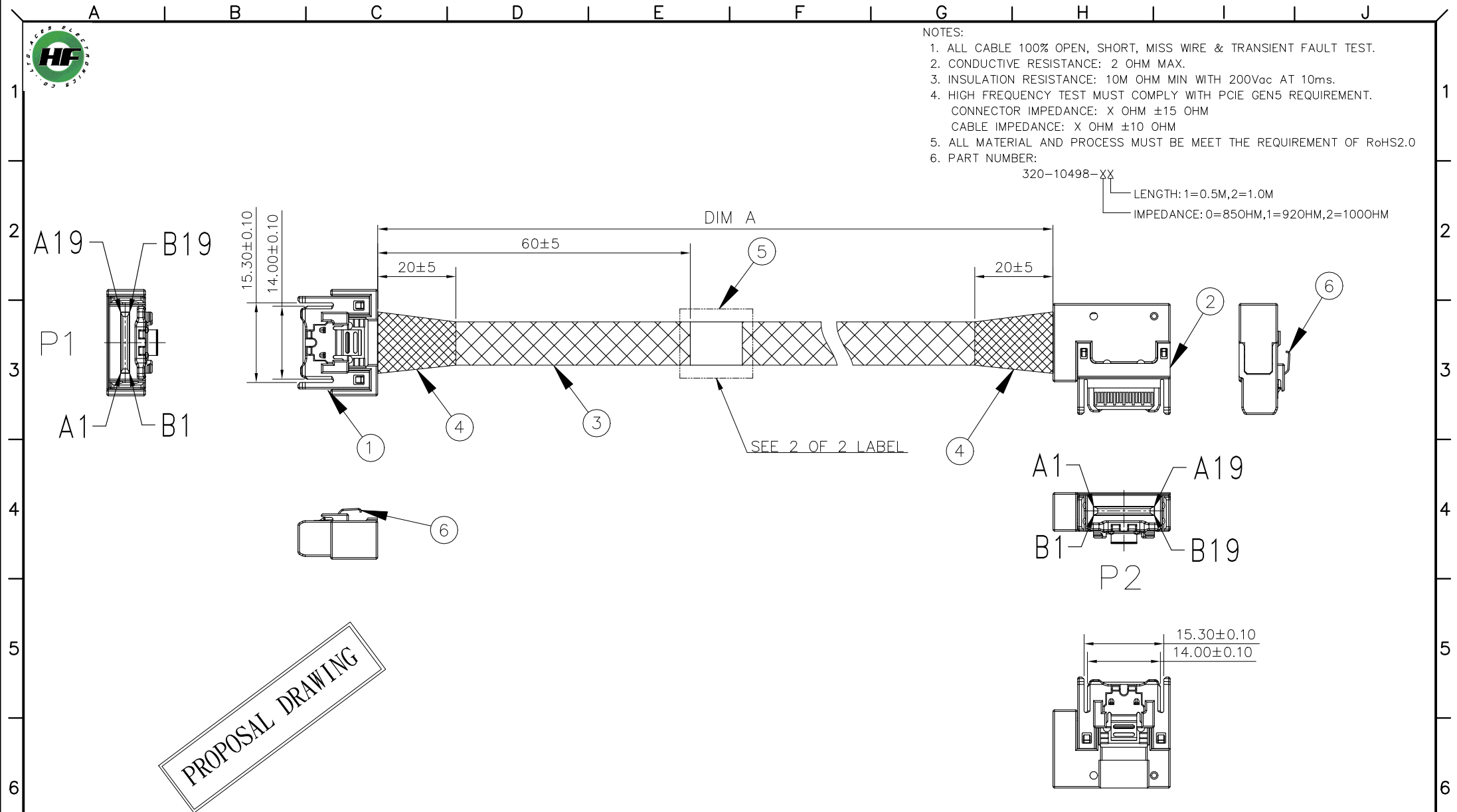
NOTES:

1. ALL CABLE 100% OPEN, SHORT, MISS WIRE & TRANSIENT FAULT TEST.
2. CONDUCTIVE RESISTANCE: 2 OHM MAX.
3. INSULATION RESISTANCE: 10M OHM MIN WITH 200Vac AT 10ms.
4. HIGH FREQUENCY TEST MUST COMPLY WITH PCIE GEN5 REQUIREMENT.
CONNECTOR IMPEDANCE: X OHM ±15 OHM
CABLE IMPEDANCE: X OHM ±10 OHM
5. ALL MATERIAL AND PROCESS MUST BE MEET THE REQUIREMENT OF RoHS2.0
6. PART NUMBER:

320-10498-XX

LENGTH: 1=0.5M,2=1.0M

IMPEDANCE: 0=850HM,1=920HM,2=1000HM



PROPOSAL DRAWING

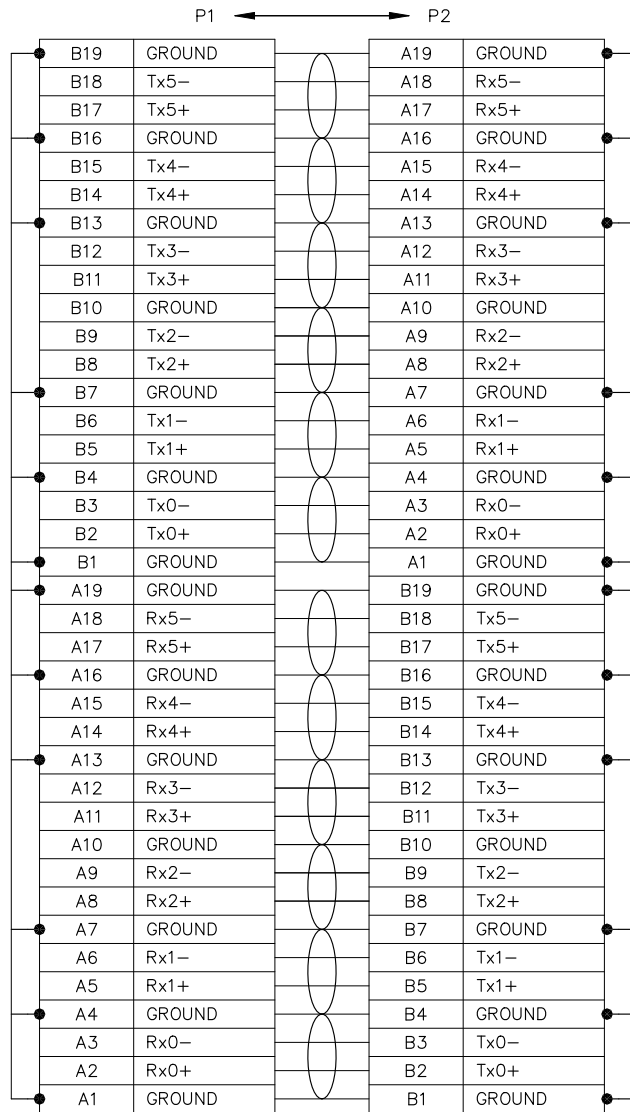
320-10498-X1	PART NUMBER
0.5M±10mm	DIM A
320-10498-X2	PART NUMBER
1M±10mm	DIM A

ITEM	DESCRIPTION	Q'TY	UNIT
1	MCIO 4X STRAIGHT TYPE	1	PCS
2	MCIO 4X RIGHT SIDE TYPE	1	MM
3	EXPANDO TUBE.	A/R	MM
4	ACETATE TAPE COLOR: BLACK.	A/R	MM
5	LABEL.	1	PCS
6	LATCH.	2	PCS

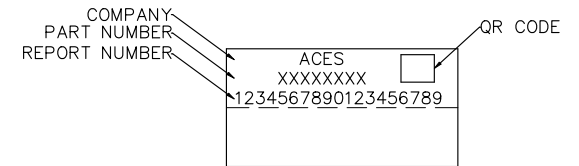
QUALITY SYMBOLS
MAJOR Ⓢ
CRITICAL Ⓢ
GENERAL TOLERANCES (UNLESS SPECIFIED)
X. ±0.15
.X ±0.10
.XX ±0.05
.XXX ±0.02
ANGLES ±1°

DRAWN BY	DATE
Wu, Chia Yi	21'/10/28
CHECKED BY	DATE
Chan, Ching Jung	21'/10/28
APPROVED BY	DATE
Chan, Ching Jung	21'/10/28
UNITS	
mm	
SCALE	
1 : 1	

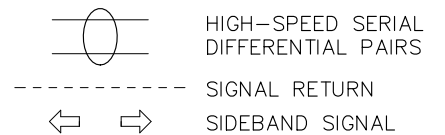
		TITLE	
		MCIO 38P STR To MCIO 38P RSE	
SIZE	RFQ NO.	N/A	
A4		REV	DWG NO.
1		1	320-10498-XX



PROPOSAL DRAWING



LABEL



QUALITY SYMBOLS MAJOR Ⓢ CRITICAL Ⓢ GENERAL TOLERANCES (UNLESS SPECIFIED) X. ±0.15 .X ±0.10 .XX ±0.05 .XXX ±0.02 ANGLES ±1°	DRAWN BY Wu, Chia Yi	DATE 21/10/28			
	CHECKED BY Chan, Ching Jung	DATE 21/10/28			TITLE MCIO 38P STR To MCIO 38P RSE
	APPROVED BY Chan, Ching Jung	DATE 21/10/28	UNITS mm		SIZE A4
	SCALE 1 : 1	SHEET NO. 2 OF 2	REV 1	DWG NO. 320-10498-XX	