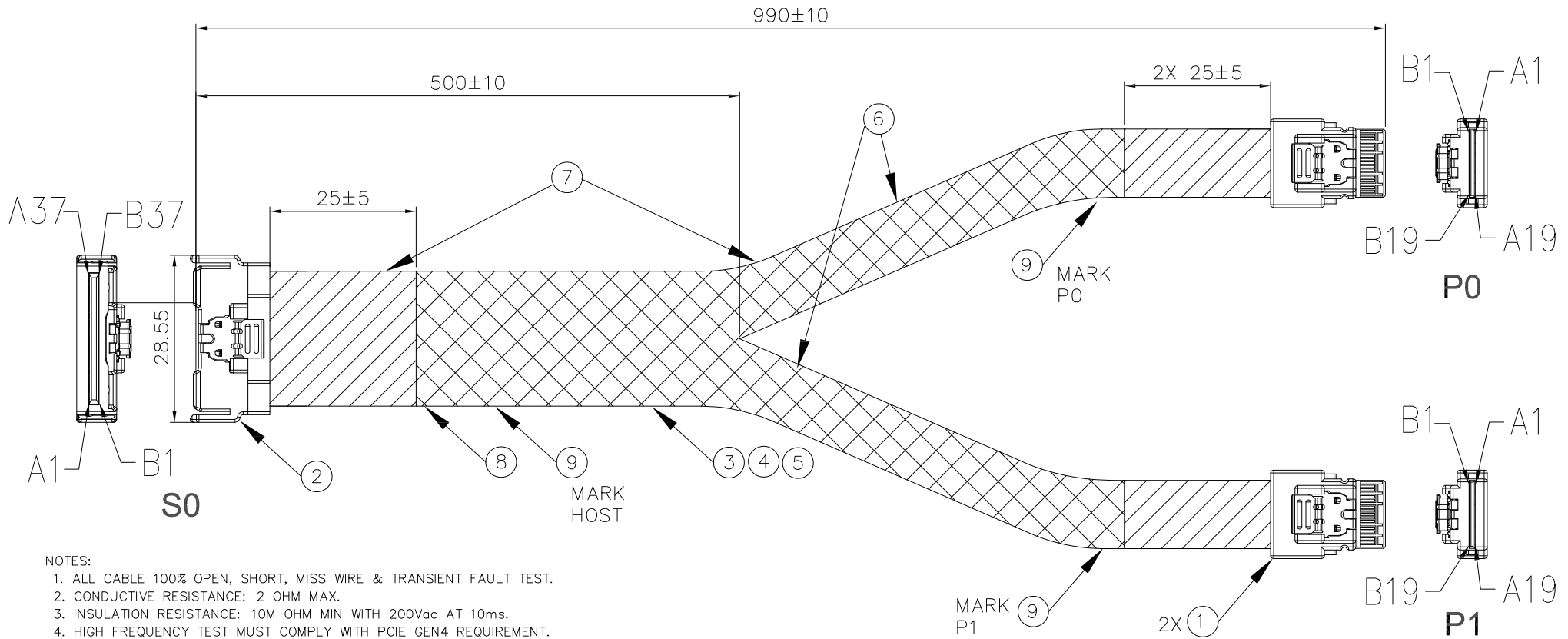


PROPOSAL DRAWING

REV.	ECN. NO.	DESCRIPTION	ENG	DATE
X1		INITIAL	Bolin	05/31/21'



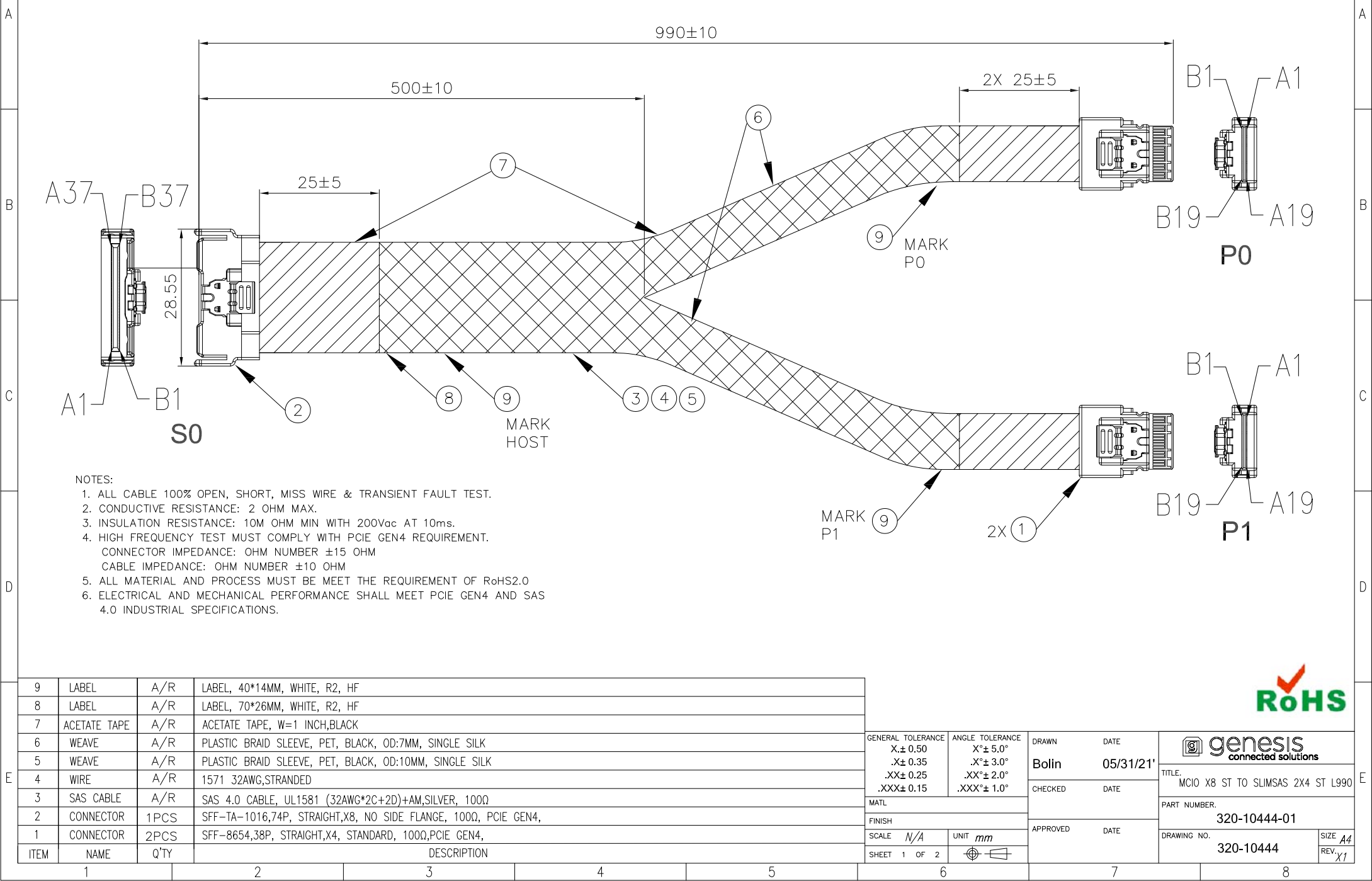
- NOTES:
1. ALL CABLE 100% OPEN, SHORT, MISS WIRE & TRANSIENT FAULT TEST.
 2. CONDUCTIVE RESISTANCE: 2 OHM MAX.
 3. INSULATION RESISTANCE: 10M OHM MIN WITH 200Vac AT 10ms.
 4. HIGH FREQUENCY TEST MUST COMPLY WITH PCIE GEN4 REQUIREMENT.
CONNECTOR IMPEDANCE: OHM NUMBER ±15 OHM
CABLE IMPEDANCE: OHM NUMBER ±10 OHM
 5. ALL MATERIAL AND PROCESS MUST BE MEET THE REQUIREMENT OF RoHS2.0
 6. ELECTRICAL AND MECHANICAL PERFORMANCE SHALL MEET PCIE GEN4 AND SAS 4.0 INDUSTRIAL SPECIFICATIONS.

9	LABEL	A/R	LABEL, 40*14MM, WHITE, R2, HF
8	LABEL	A/R	LABEL, 70*26MM, WHITE, R2, HF
7	ACETATE TAPE	A/R	ACETATE TAPE, W=1 INCH, BLACK
6	WEAVE	A/R	PLASTIC BRAID SLEEVE, PET, BLACK, OD:7MM, SINGLE SILK
5	WEAVE	A/R	PLASTIC BRAID SLEEVE, PET, BLACK, OD:10MM, SINGLE SILK
4	WIRE	A/R	1571 32AWG, STRANDED
3	SAS CABLE	A/R	SAS 4.0 CABLE, UL1581 (32AWG*2C+2D)+AM, SILVER, 100Q
2	CONNECTOR	1PCS	SFF-TA-1016, 74P, STRAIGHT, X8, NO SIDE FLANGE, 100Q, PCIE GEN4,
1	CONNECTOR	2PCS	SFF-8654, 38P, STRAIGHT, X4, STANDARD, 100Q, PCIE GEN4,
ITEM	NAME	Q'TY	DESCRIPTION

GENERAL TOLERANCE	ANGLE TOLERANCE
X.± 0.50	X°± 5.0°
.X± 0.35	.X°± 3.0°
.XX± 0.25	.XX°± 2.0°
.XXX± 0.15	.XXX°± 1.0°
MATL	FINISH
SCALE N/A	UNIT mm
SHEET 1 OF 2	

DRAWN	DATE
Bolin	05/31/21'
CHECKED	DATE
APPROVED	DATE

TITLE: MCIO X8 ST TO SLIMSAS 2X4 ST L990	
PART NUMBER: 320-10444-01	
DRAWING NO. 320-10444	SIZE A4
REV. X1	



PROPOSAL DRAWING

CONNECTOR SIGNAL	CONNECTOR	PIN/PAD	CONNECTOR	PIN/PAD	CONNECTOR SIGNAL	WIRE/CABLE	NOTES
GROUND	S0 (HOST)	A1	P0	B1	GROUND	ITEM3	
Rx0+		A2		B2	Tx0+	ITEM3	
Rx0-		A3		B3	Tx0-	ITEM3	
GROUND		A4		B4	GROUND	ITEM3	
Rx1+		A5		B5	Tx1+	ITEM3	
Rx1-		A6		B6	Tx1-	ITEM3	
GROUND		A7		B7	GROUND	ITEM3	
SB7A		A8		B8	SB7	ITEM4	NOTE2
SB4A		A9		B9	SB4	ITEM4	NOTE2
GROUND(SB3A)		A10		B10	GROUND(SB3)	ITEM3	
SBA+		A11		B11	SBA+	ITEM3	
SBA-		A12		B12	SBA-	ITEM3	
GROUND		A13		B13	GROUND	ITEM3	
Rx2+		A14		B14	Tx2+	ITEM3	
Rx2-		A15		B15	Tx2-	ITEM3	
GROUND		A16		B16	GROUND	ITEM3	
Rx3+		A17		B17	Tx3+	ITEM3	
Rx3-		A18		B18	Tx3-	ITEM3	
GROUND		A19		B19	GROUND	ITEM3	NOTE1
GROUND	S0 (HOST)	B1	P1	A1	GROUND	ITEM3	
Tx0+		B2		A2	Rx0+	ITEM3	
Tx0-		B3		A3	Rx0-	ITEM3	
GROUND		B4		A4	GROUND	ITEM3	
Tx1+		B5		A5	Rx1+	ITEM3	
Tx1-		B6		A6	Rx1-	ITEM3	
GROUND		B7		A7	GROUND	ITEM3	
SB0A		B8		A8	SB0	ITEM4	NOTE2
SB1A		B9		A9	SB1	ITEM4	NOTE2
GROUND(SB2A)		B10		A10	GROUND(SB2)	ITEM3	
SB5A		B11		A11	SB5	ITEM3	
SB6A		B12		A12	SB6	ITEM3	
GROUND		B13		A13	GROUND	ITEM3	
Tx2+		B14		A14	Rx2+	ITEM3	
Tx2-		B15		A15	Rx2-	ITEM3	
GROUND		B16		A16	GROUND	ITEM3	
Tx3+		B17		A17	Rx3+	ITEM3	
Tx3-		B18		A18	Rx3-	ITEM3	
GROUND		B19		A19	GROUND	ITEM3	NOTE1

CONNECTOR SIGNAL	CONNECTOR	PIN/PAD	CONNECTOR	PIN/PAD	CONNECTOR SIGNAL	WIRE/CABLE	NOTES
GROUND	S0 (HOST)	A19	P1	B1	GROUND	ITEM3	NOTE1
Rx4+		A20		B2	Tx0+	ITEM3	
Rx4-		A21		B3	Tx0-	ITEM3	
GROUND		A22		B4	GROUND	ITEM3	
Rx5+		A23		B5	Tx1+	ITEM3	
Rx5-		A24		B6	Tx1-	ITEM3	
GROUND		A25		B7	GROUND	ITEM3	
SB7B		A26		B8	SB7	ITEM4	NOTE2
SB4B		A27		B9	SB4	ITEM4	NOTE2
GROUND(SB3B)		A28		B10	GROUND(SB3)	ITEM3	
SBB+		A29		B11	SBA+	ITEM3	
SBB-		A30		B12	SBA-	ITEM3	
GROUND		A31		B13	GROUND	ITEM3	
Rx6+		A32		B14	Tx2+	ITEM3	
Rx6-		A33		B15	Tx2-	ITEM3	
GROUND		A34		B16	GROUND	ITEM3	
Rx7+		A35		B17	Tx3+	ITEM3	
Rx7-		A36		B18	Tx3-	ITEM3	
GROUND		A37		B19	GROUND	ITEM3	NOTE1
GROUND	S0 (HOST)	B19	P1	A1	GROUND	ITEM3	NOTE1
Tx4+		B20		A2	Rx0+	ITEM3	
Tx4-		B21		A3	Rx0-	ITEM3	
GROUND		B22		A4	GROUND	ITEM3	
Tx5+		B23		A5	Rx1+	ITEM3	
Tx5-		B24		A6	Rx1-	ITEM3	
GROUND		B25		A7	GROUND	ITEM3	
SB0B		B26		A8	SB0	ITEM4	NOTE2
SB1B		B27		A9	SB1	ITEM4	NOTE2
GROUND(SB2B)		B28		A10	GROUND(SB2)	ITEM3	
SB5B		B29		A11	SB5	ITEM3	
SB6B		B30		A12	SB6	ITEM3	
GROUND		B31		A13	GROUND	ITEM3	
Tx6+		B32		A14	Rx2+	ITEM3	
Tx6-		B33		A15	Rx2-	ITEM3	
GROUND		B34		A16	GROUND	ITEM3	
Tx7+		B35		A17	Rx3+	ITEM3	
Tx7-		B36		A18	Rx3-	ITEM3	
GROUND		B37		A19	GROUND	ITEM3	

S0 SIDE BAND (Aii-32i USAGE)		
PIN	SFF-9402 SIGNAL	Aii-32 SIGNAL
A8	SB7A	BP_TYPE
A9	SB4A	SIO_DOUT
A10	GROUND(SB3A)	GROUND
A11	SBA+	CTRL_IDO(static)
A12	SBA-	ITEM3
B8	SB0A	SIO_CLKOUT
B9	SB1A	SIO_LOAD_OUT
B10	GROUND(SB2A)	GROUND
B11	SB5A	SIO_DIN
B12	SB6A	CTRL_TYPE(static)
A26	SB7B	NC-UNUSED
A27	SB4B	NC-UNUSED
A28	GROUND(SB3B)	GROUND
A29	SBB+	NC-UNUSED
A30	SBB-	NC-UNUSED
B26	SB0B	NC-UNUSED
B27	SB1B	NC-UNUSED
B28	GROUND(SB2B)	GROUND
B29	SB5B	NC-UNUSED
B30	SB6B	NC-UNUSED

NOTES:

- PIN/PAD ON CONNECTOR S0 SHARED ON CONNECTORS P0 AND P1.
- END TO END RESISTANCE OF INDICATED CONNECTION SHALL BE 750 MILLIOH MAX.



GENERAL TOLERANCE X.± 0.50 .X± 0.35 .XX± 0.25 .XXX± 0.15	ANGLE TOLERANCE X°± 5.0° .X°± 3.0° .XX°± 2.0° .XXX°± 1.0°	DRAWN Bolin	DATE 05/31/21'	
MATERIAL		CHECKED	DATE	
FINISH		APPROVED		PART NUMBER 320-10444-01
SCALE <i>N/A</i>	UNIT <i>mm</i>	SHEET 2 OF 2		DRAWING NO. 320-10444
				SIZE <i>A4</i> REV. <i>X1</i>

