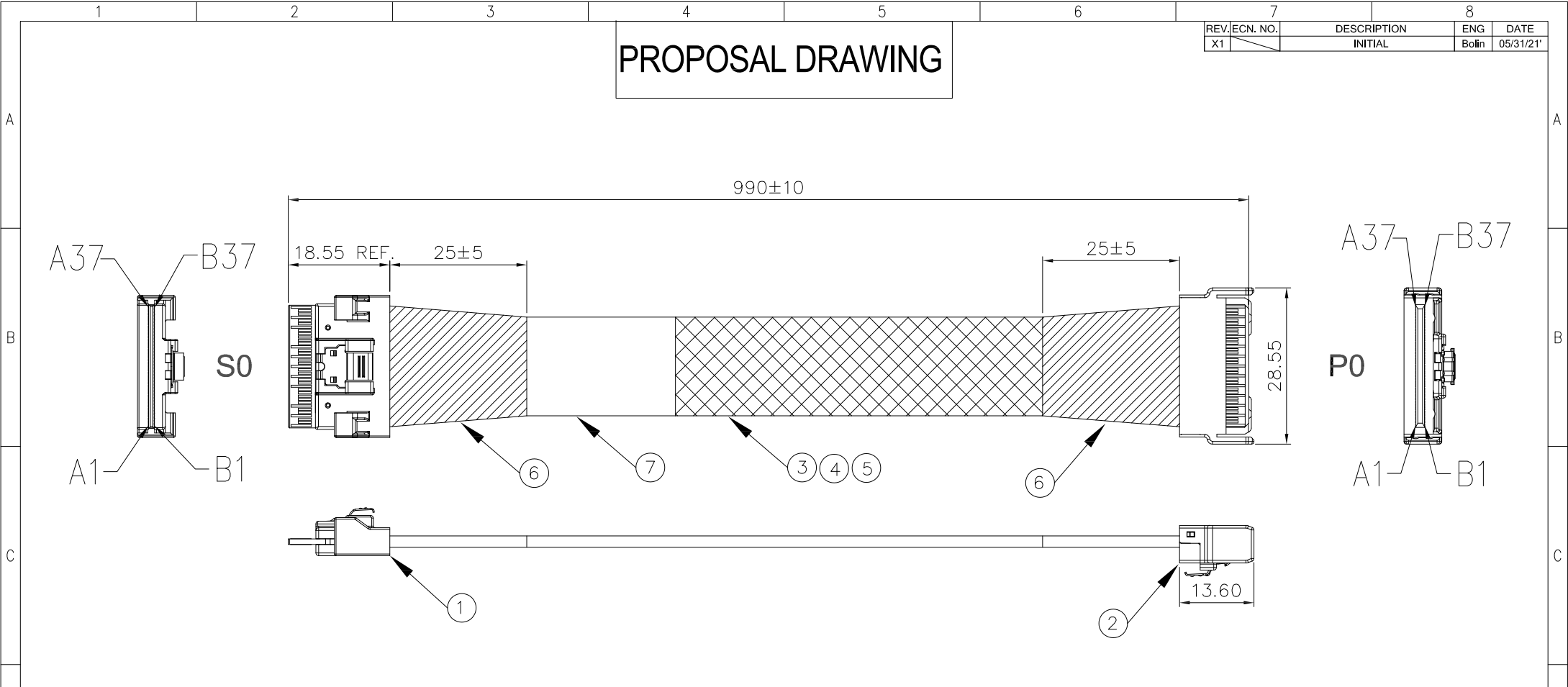


# PROPOSAL DRAWING

REV. ECN. NO.	DESCRIPTION	ENG	DATE
X1	INITIAL	Bolin	05/31/21'



- NOTES:
1. ALL CABLE 100% OPEN, SHORT, MISS WIRE & TRANSIENT FAULT TEST.
  2. CONDUCTIVE RESISTANCE: 2 OHM MAX.
  3. INSULATION RESISTANCE: 10M OHM MIN WITH 200Vac AT 10ms.
  4. HIGH FREQUENCY TEST MUST COMPLY WITH PCIE GEN5 REQUIREMENT.  
CONNECTOR IMPEDANCE: OHM NUMBER ±15 OHM  
CABLE IMPEDANCE: OHM NUMBER ±10 OHM
  5. ALL MATERIAL AND PROCESS MUST BE MEET THE REQUIREMENT OF RoHS2.0
  6. ELECTRICAL AND MECHANICAL PERFORMANCE SHALL MEET PCIE GEN5 AND SAS 4.0 INDUSTRIAL SPECIFICATIONS.



7	LABEL	1PCS	WHITE LABEL,70*26MM(REF)
6	ACETATE TAPE	A/R	ACETATE TAPE,W=25MM,BLACK.
5	WEAVE	A/R	PLASTIC BRAID SLEEVE,PET,BLACK,OD:10MM,SINGLE SILK
4	WIRE	A/R	1571 32AWG,STRANDED
3	SAS CABLE	A/R	SAS4.0 CABLE,(30AWG*2C+2D)+AM,SILVER,85Q
2	CONNECTOR	1PCS	SFF-TA-1016,74P,STRAIGHT,X8,NO SIDE FLANGE,85Q,PCIE GEN5
1	CONNECTOR	1PCS	SFF-8654,74P,STRAIGHT,X8,STANDARD,85Q,PCIE GEN5
ITEM	NAME	Q'TY	DESCRIPTION

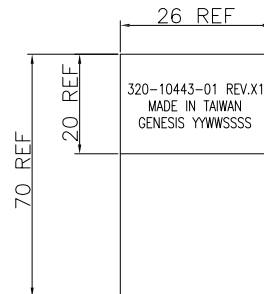
GENERAL TOLERANCE X.± 0.50 .X± 0.35 .XX± 0.25 .XXX± 0.15	ANGLE TOLERANCE X°± 5.0° .X°± 3.0° .XX°± 2.0° .XXX°± 1.0°	DRAWN <b>Bolin</b>	DATE <b>05/31/21'</b>	
MATL		CHECKED	DATE	
FINISH		APPROVED		PART NUMBER <b>320-10443-01</b>
SCALE <i>N/A</i>	UNIT <i>mm</i>	DATE		DRAWING NO. <b>320-10443</b>
SHEET 1 OF 2				SIZE <i>A4</i> REV. <i>X1</i>

# PROPOSAL DRAWING

CONNECTOR SIGNAL	CONNECTOR	PIN/PAD	CONNECTOR	PIN/PAD	CONNECTOR SIGNAL	WIRE/CABLE	NOTES	
GROUND	S0	A1	P0	A1	GROUND	ITEM3		
Rx0+		A2		A2	Rx0+	ITEM3		
Rx0-		A3		A3	Rx0-	ITEM3		
GROUND		A4		A4	GROUND	ITEM3		
Rx1+		A5		A5	Rx1+	ITEM3		
Rx1-		A6		A6	Rx1-	ITEM3		
GROUND		A7		A7	GROUND	ITEM3		
SB7A		A8						
SB4A		A9						
GROUND/SB3A		A10			B28	GROUND/SB2A	ITEM3	
SBA+		A11			B26	SB7B	ITEM3	
SBA-		A12			B27	SB4B	ITEM3	
GROUND		A13			A13	GROUND	ITEM3	
Rx2+		A14			A14	Rx2+	ITEM3	
Rx2-		A15			A15	Rx2-	ITEM3	
GROUND		A16			A16	GROUND	ITEM3	
Rx3+		A17			A17	Rx3+	ITEM3	
Rx3-		A18			A18	Rx3-	ITEM3	
GROUND		A19			A19	GROUND	ITEM3	
Rx4+		A20			A20	Rx4+	ITEM3	
Rx4-		A21			A21	Rx4-	ITEM3	
GROUND		A22			A22	GROUND	ITEM3	
Rx5+		A23			A23	Rx5+	ITEM3	
Rx5-		A24			A24	Rx5-	ITEM3	
GROUND		A25			A25	GROUND	ITEM3	
SB7B		A26			B8	SB7A	NO CONNECT	
SB4B		A27			B9	SB4A	NO CONNECT	
GROUND/SB3B		A28			B10	GROUND/SB3B	ITEM4	NOTE1
SBB+		A29			A29	SB5B	NO CONNECT	
SBB-		A30			A30	SB6B	NO CONNECT	
GROUND		A31			A31	GROUND	ITEM3	
Rx6+		A32			A32	Rx6+	ITEM3	
Rx6-		A33			A33	Rx6-	ITEM3	
GROUND		A34			A34	GROUND	ITEM3	
Rx7+		A35			A35	Rx7+	ITEM3	
Rx7-		A36			A36	Rx7-	ITEM3	
GROUND		A37			A37	GROUND	ITEM3	

CONNECTOR SIGNAL	CONNECTOR	PIN/PAD	CONNECTOR	PIN/PAD	CONNECTOR SIGNAL	WIRE/CABLE	NOTES	
GROUND	S0	B1	P0	B1	GROUND	ITEM3		
Tx0+		B2		B2	Tx0+	ITEM3		
Tx0-		B3		B3	Tx0-	ITEM3		
GROUND		B4		B4	GROUND	ITEM3		
Tx1+		B5		B5	B5	Tx1+	ITEM3	
Tx1-		B6		B6	B6	Tx1-	ITEM3	
GROUND		B7		B7	B7	GROUND	ITEM3	
SB0A		B8			AB/A26	SB0A	ITEM4	NOTE2,NOTE1
SB1A		B9			A26	SB0B	ITEM4	NOTE1
					A27	SB1B	ITEM4	NOTE1
					A9/A27	SB1A	ITEM4	NOTE2,NOTE1
GROUND/SB2A		B10			A10	GROUND/SB2A	ITEM3	
SB5A		B11			A11	SB5A	ITEM3	
SB6A		B12			A12	SB6A	NO CONNECT	
GROUND		B13			B13	GROUND	ITEM3	
Tx2+		B14			B14	Tx2+	ITEM3	
Tx2-		B15			B15	Tx2-	ITEM3	
GROUND		B16			B16	GROUND	ITEM3	
Tx3+		B17			B17	Tx3+	ITEM3	
Tx3-		B18			B18	Tx3-	ITEM3	
GROUND		B19			B19	GROUND	ITEM3	
Tx4+		B20			B20	Tx4+	ITEM3	
Tx4-		B21			B21	Tx4-	ITEM3	
GROUND		B22			B22	GROUND	ITEM3	
Tx5+		B23			B23	Tx5+	ITEM3	
Tx5-		B24			B24	Tx5-	ITEM3	
GROUND		B25			B25	GROUND	ITEM3	
SB0B		B26			B11	SBA+	NO CONNECT	
SB1B		B27			B12	SBA-	NO CONNECT	
GROUND/SB2B		B28			A28	GROUND/SB2B	ITEM4	NOTE1
SB5B		B29			B29	SBB+	NO CONNECT	
SB6B		B30			B30	SBB-	NO CONNECT	
GROUND		B31			B31	GROUND	ITEM3	
Tx6+		B32			B32	Tx6+	ITEM3	
Tx6-		B33			B33	Tx6-	ITEM3	
GROUND		B34			B34	GROUND	ITEM3	
Tx7+		B35			B35	Tx7+	ITEM3	
Tx7-	B36		B36	Tx7-	ITEM3			
GROUND	B37		B37	GROUND	ITEM3			

## LABEL INFORMATION



FONT: ARIAL  
HEIGHT: 2.0mm Min

### NOTES:

- END TO END RESISTANCE OF INDICATED CONNECTION SHALL BE 750 MILLIOHM MAX.
- WIRE INDICATED PINS TOGETHER AS SHOWN AT P0 END WITH 75MM+5MM LOOP. WIRE LOOP SHALL EXTEND BEYOND TAPE WITHIN SLEEVING.

GENERAL TOLERANCE X.± 0.50 .X± 0.35 .XX± 0.25 .XXX± 0.15	ANGLE TOLERANCE X°± 5.0° .X°± 3.0° .XX°± 2.0° .XXX°± 1.0°	DRAWN <b>Bolin</b>	DATE <b>05/31/21'</b>	
MATL	FINISH	CHECKED	DATE	
SCALE <i>N/A</i>	UNIT <i>mm</i>	APPROVED	DATE	PART NUMBER <b>320-10443-01</b>
SHEET 2 OF 2				DRAWING NO. <b>320-10443</b>
				SIZE <i>A4</i> REV. <i>X1</i>

