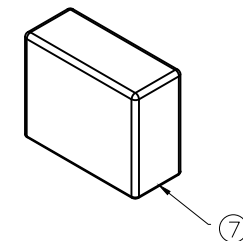
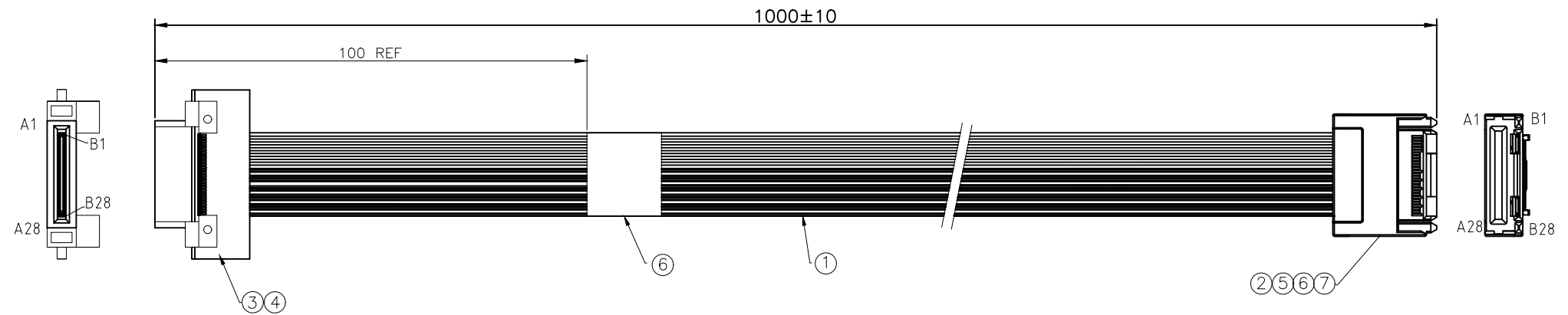


PROPRIETARY INFORMATION
COMPANY CONFIDENTIAL

REV.	ECN. NO.	DESCRIPTION	ENG	DATE
X1		ISSUED	KYLE	1/24/2020

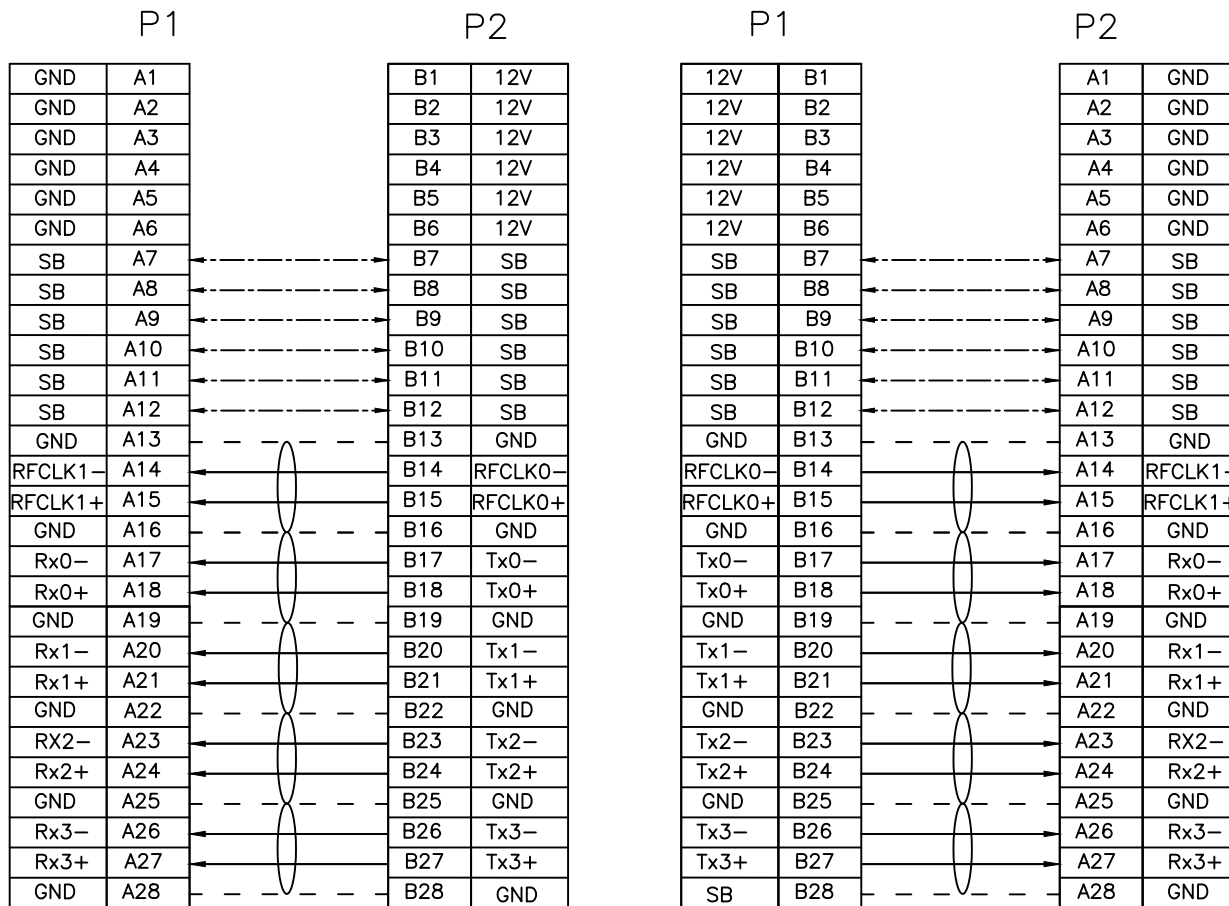


RoHS Compliant

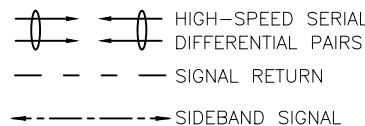
ITEM	NAME	Q'TY	DESCRIPTION	NOTE
9	DUST COVER	1	DUST COVER EDSFF 1C	
8	LABEL	1	WHITE LABEL, 60*30MM(REF)	
7	LATCH	1	LATCH, EDSFF 1C	
6	HOUSING	1	HOUSING, EDSFF 1C	
5	INNER MOLD	A/R	INNER MOLD FOR EDSFF 1C	
4	CONNECTOR	1	EDSFF, 56 PIN, SMT	
3	PCB	1	PCB, EXTENDED 1C, 85 OHM	
2	PCB	1	PCB, EDSFF 1C, 85 OHM	
1	SAS CABLE	A/R	PCIe4.0 CABLE FFC 16G 30AWG 85 OHM	

GENERAL TOLERANCE X ± .X ± 0.40 .XX ± 0.30 .XXX ± 0.20	ANGLE TOLERANCE X° ± 5.0° .X° ± 3.0° .XX° ± 2.0° .XXX° ± 1.0°	DRAWN KYLE	DATE 1/24/2020	
MATL SEE BOM	FINISH SEE BOM	CHECKED	DATE	
SCALE N/A	UNIT mm	APPROVED	DATE	PART NUMBER 320-10358-01
SHEET 1 OF 2				DRAWING NO. 320-10358
				SIZE A4
				REV. X1

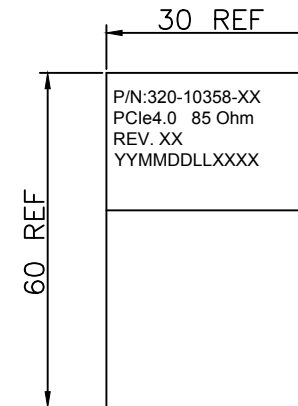
WIRING TABLE



A1,A2,A3,A4,A5,A6,A13,A16,A19,A22,A25,A28,
B1,B2,B3,B4,B5,B6,B13,B16,B19,B22,B25,B28 Grounded on PCB



LABEL INFORMATION



FONT: ARIAL
HEIGHT: 2.0mm Min

TEST CONDITIONS:

1. 100% OPEN & SHORT & MISS-WIRING & INTERMITTENCE TEST.
2. CONDUCTIVE RESISTANCE: 3Ω MAX.
3. INSULATION RESISTANCE: 10 MΩ
4. HI-POT TEST: 300VDC FOR 10ms.
5. THIS PRODUCT MEETS PCIe 4.0

RoHS Compliant

GENERAL TOLERANCE X ± .X ± 0.40 .XX ± 0.30 .XXX ± 0.20	ANGLE TOLERANCE X° ± 5.0° .X° ± 3.0° .XX° ± 2.0° .XXX° ± 1.0°	DRAWN KYLE 1/24/2020	DATE		TITLE- Cable Assembly, EDSFF 1C With Extended Board, PCIe4.0 85 Ohm
MATL SEE BOM	FINISH SEE BOM	CHECKED	DATE		
SCALE N/A	UNIT mm	APPROVED	DATE	DRAWING NO. 320-10358	SIZE A4 REV. X1
SHEET 2 OF 2					