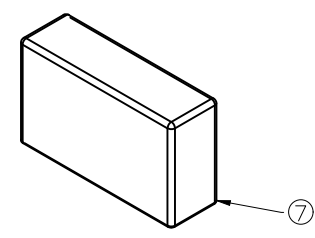
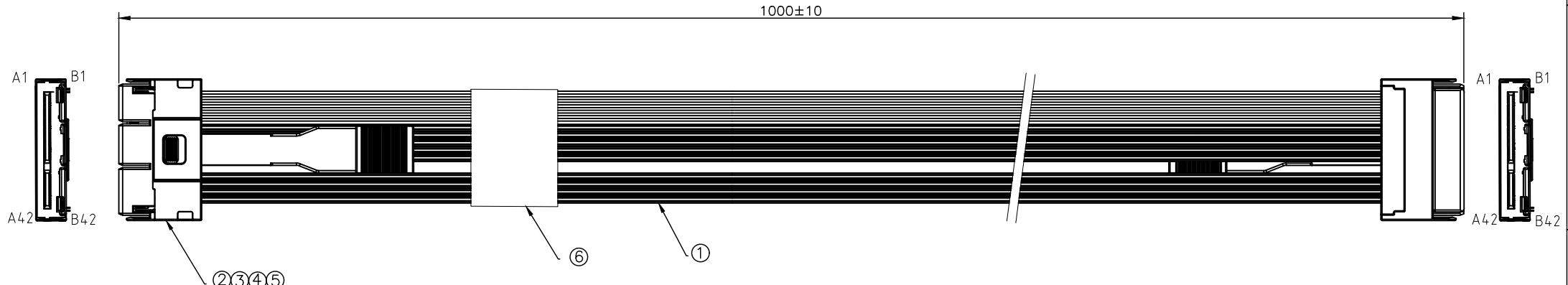


PROPRIETARY INFORMATION
COMPANY CONFIDENTIAL

REV.	ECN. NO.	DESCRIPTION	ENG	DATE
X1		ISSUED	KYLE	12/10/2019

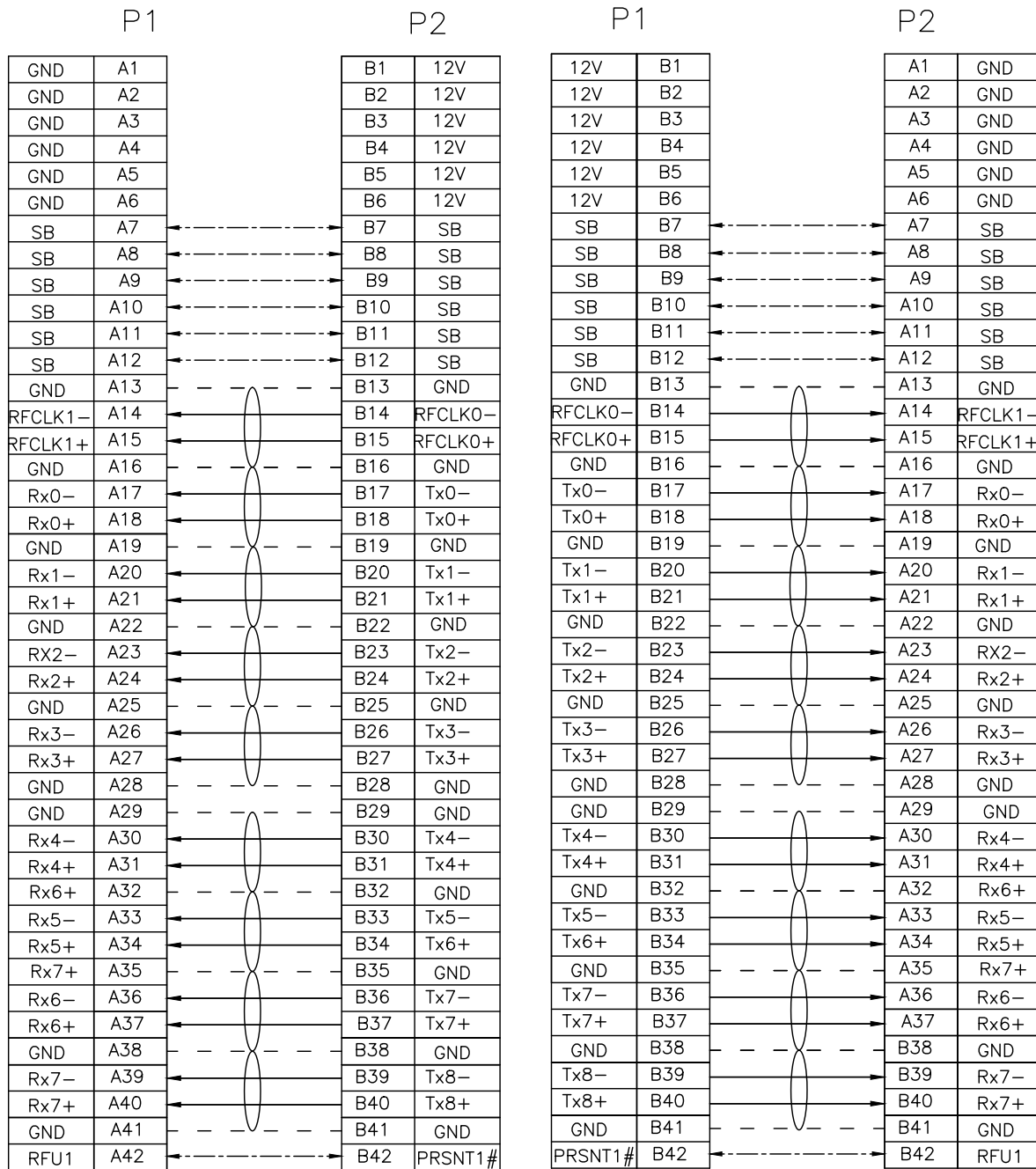


ITEM	NAME	Q'TY	DESCRIPTION	NOTE
7	DUST COVER	2	DUST COVER EDSFF 2C	
6	LABEL	1	WHITE LABEL, 60*30MM(REF)	
5	LATCH	2	LATCH, EDSFF 2C	
4	HOUSING	2	HOUSING, EDSFF 2C	
3	INNER MOLD	2	INNER MOLDING FOR EDSFF 2C	
2	PCB	2	PCB, EDSFF 2C, 85 OHM	
1	SAS CABLE	A/R	PCIe4.0 CABLE 16G 30AWG 85 OHM	

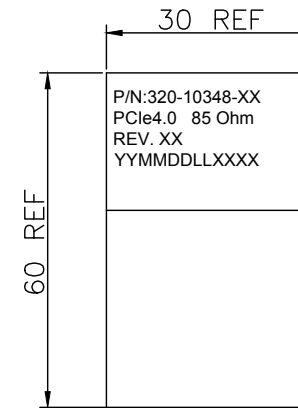
RoHS Compliant

GENERAL TOLERANCE X ± .X ± 0.40 .XX ± 0.30 .XXX ± 0.20		ANGLE TOLERANCE X° ± 5.0° .X° ± 3.0° .XX° ± 2.0° .XXX° ± 1.0°		DRAWN KYLE 12/10/19		DATE 12/10/19			
MATL SEE BOM		FINISH SEE BOM		CHECKED		DATE			
SCALE N/A		UNIT mm		APPROVED		DATE		PART NUMBER 320-10348-01	
SHEET 1 OF 2								DRAWING NO. 320-10348	
								SIZE A4 REV. X1	

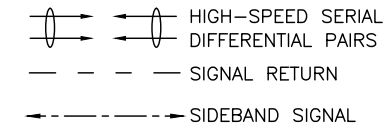
WIRING TABLE



LABEL INFORMATION



FONT: ARIAL
HEIGHT: 2.0mm Min



A1,A2,A3,A4,A5,A6,A13,A16,A19,A22,A25,A28,A29,A32,A35,A38, A41
B1,B2,B3,B4,B5,B6,B13,B16,B19,B22,B25,B28,B29,B32,B35,B38,B41 Grounded on PCB

TEST CONDITIONS:

- 100% OPEN & SHORT & MISS-WIRING & INTERMITTENCE TEST.
- CONDUCTIVE RESISTANCE: 3Ω MAX.
- INSULATION RESISTANCE: 10 MΩ
- HI-POT TEST: 300VDC FOR 10ms.
- THIS PRODUCT MEETS PCIe 4.0

RoHS Compliant

GENERAL TOLERANCE X ± .X ± 0.40 .XX ± 0.30 .XXX ± 0.20	ANGLE TOLERANCE X° ± 5.0° .X° ± 3.0° .XX° ± 2.0° .XXX° ± 1.0°	DRAWN KYLE	DATE 12/10/19		TITLE EDSFF 2C Cable Ass'Y PCIe4.0 85 Ohm
MATL SEE BOM	FINISH SEE BOM	CHECKED	DATE		PART NUMBER 320-10348-01
SCALE N/A	UNIT mm	APPROVED	DATE	DRAWING NO. 320-10348	SIZE A4 REV X1
SHEET 2 OF 2					