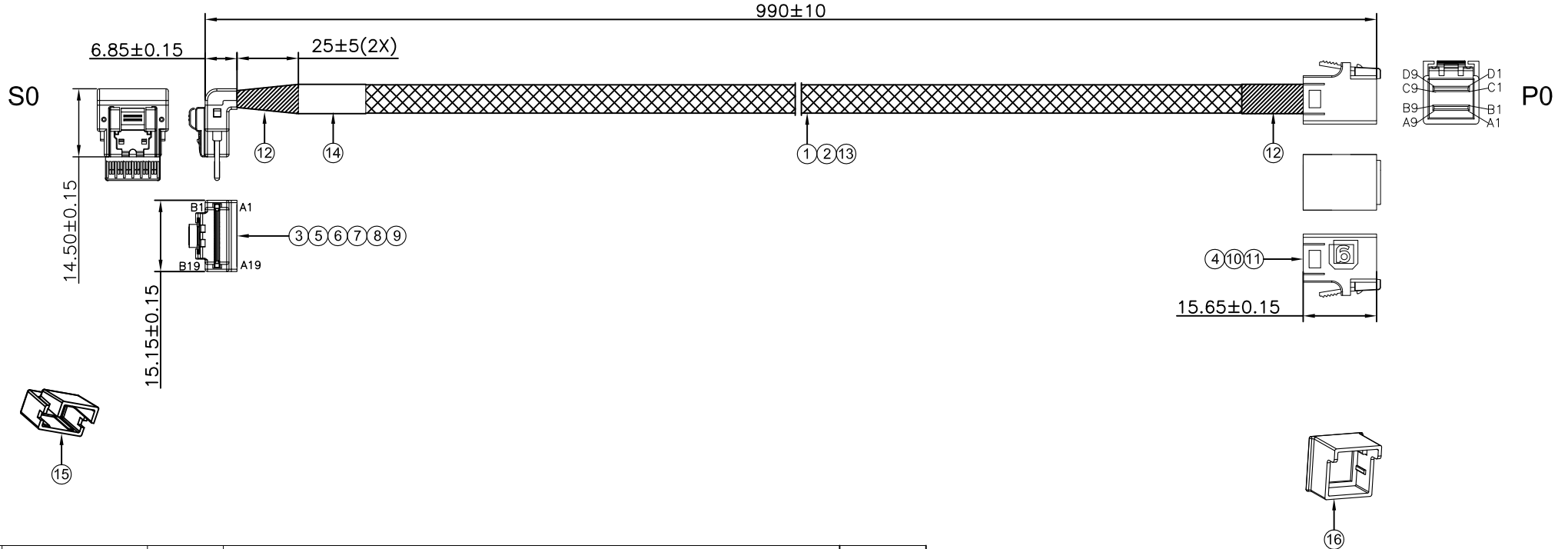


PROPRIETARY INFORMATION
COMPANY CONFIDENTIAL

REV.	ECN. NO.	DESCRIPTION	ENG	DATE
X1		ISSUED	TIM	01/29/18

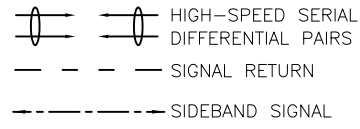
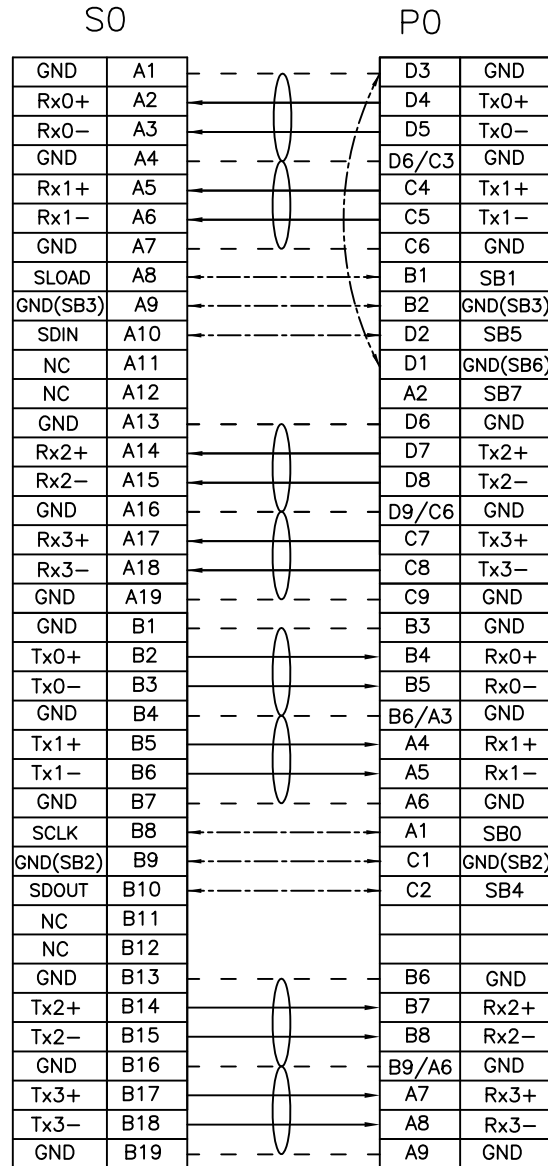


16	DUST CAP	1	DUST CAP FOR SFF-8643 4i, PE, NATURAL	
15	DUST CAP	1	DUST CAP FOR SFF-8654 4i, PE, NATURAL	
14	LABEL	1	WHITE LABEL, 60*30MM(REF)	
13	WEAVE	A/R	PLASTIC BRAID SLEEVE, PET, YELLOW, OD:8.0MM	
12	ACETATE TAPE	A/R	ACETATE TAPE, W=25MM, BLACK	
11	HOUSING	1	HOUSING FOR SFF-8643 4i STR, BLACK,"G" Logo	
10	INNER MOLD	1	INNER MOLDING FOR SFF-8643 4i STR, BLACK	
9	RIVET	2	RIVET FOR SFF-8654	
8	LATCH	1	LATCH FOR SFF-8654	
7	BACK COVER	1	BACK COVER FOR SFF-8654 4i R/A, BLACK	
6	HOUSING	1	HOUSING FOR SFF-8654 4i R/A, BLACK	
5	INNER MOLD	1	INNER MOLDING FOR SFF-8654 4i R/A, BLACK	
4	8643 4i PCB	2	PCB FOR INT. MINI SAS HD 4i STR, AU30u"	
3	8654 4i PCB	1	PCB FOR SLIMLINE SAS 4i R/A, AU30u"	
2	WIRE	A/R	UL1571, 32AWG, PVC	
1	SAS CABLE	A/R	SAS CABLE: UL20744 32AWG 100ohm,SAS 3.0,VW-1	
ITEM	NAME	Q'TY	DESCRIPTION	NOTE

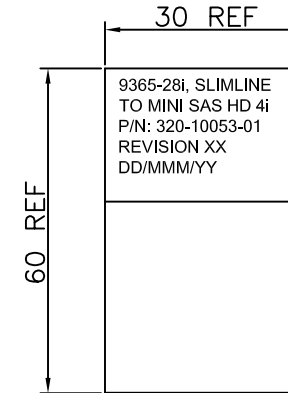
RoHS Compliant

GENERAL TOLERANCE	ANGLE TOLERANCE	DRAWN	DATE	
X ±	X° ± 5.0°	TIM	2018.01.29	
.X ± 0.40	.X° ± 3.0°	CHECKED	DATE	TITLE- CABLE, RIGHT ANGLE X4 SFF-8654 TO X4 INTERNAL MINI SAS HD, 1M
.XX ± 0.30	.XX° ± 2.0°	EASON	2018.01.29	PART NUMBER. 320-10053-01
.XXX ± 0.20	.XXX° ± 1.0°	APPROVED	DATE	DRAWING NO. 320-10053
MATL SEE BOM	SCALE N/A	MIKE	2018.01.29	SIZE A4
FINISH SEE BOM	UNIT mm			REV. X1
SHEET 1 OF 2				

WIRING TABLE



LABEL INFORMATION



FONT: ARIAL
HEIGHT: 2.0mm Min

TEST CONDITIONS:

- 100% OPEN & SHORT & MISS-WIRING & INTERMITTENCE TEST.
- CONDUCTIVE RESISTANCE: 3Ω MAX.
- INSULATION RESISTANCE: 10 MΩ
- HI-POT TEST: 300VDC FOR 10ms.
- THIS PRODUCT MEETS SAS 3.0

RoHS Compliant

GENERAL TOLERANCE X ± .X ± 0.40 .XX ± 0.30 .XXX ± 0.20	ANGLE TOLERANCE X° ± 5.0° .X° ± 3.0° .XX° ± 2.0° .XXX° ± 1.0°	DRAWN TIM	DATE 2018.01.29		TITLE CABLE, RIGHT ANGLE X4 SFF-8654 TO X4 INTERNAL MINI SAS HD, 1M
MATL SEE BOM	FINISH SEE BOM	CHECKED EASON	DATE 2018.01.29		PART NUMBER 320-10053-01
SCALE N/A	UNIT mm	APPROVED MIKE	DATE 2018.01.29	DRAWING NO. 320-10053	SIZE A4 REV. X1
SHEET 2 OF 2					

NOTES:

1. S0: A1,A4,A7,A13,A16,A19,B1,B4,B7,B13,B16,B19 GROUNDED ON PCB.
2. P0: A3,A6,A9,B3,B6,B9; C3,C6,C9,D3,D6,D9 GROUNDED ON PCB.
3. SHORT PIN/PAD P0-D1 TO GND, NO CONNECT TO CONNECTOR S0.