



NOTES:

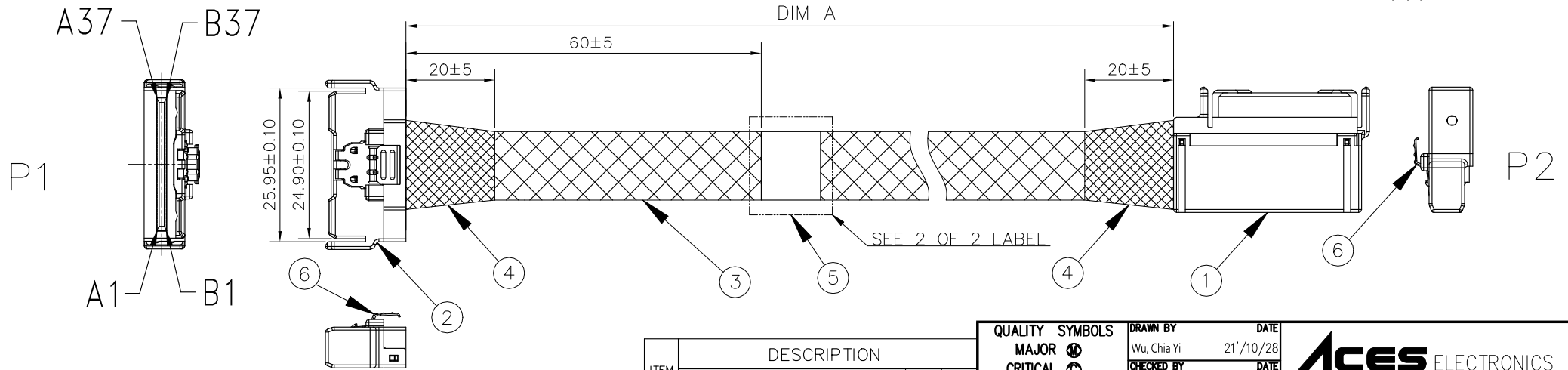
1. ALL CABLE 100% OPEN, SHORT, MISS WIRE & TRANSIENT FAULT TEST.
2. CONDUCTIVE RESISTANCE: 2 OHM MAX.
3. INSULATION RESISTANCE: 10M OHM MIN WITH 200Vac AT 10ms.
4. HIGH FREQUENCY TEST MUST COMPLY WITH PCIE GEN5 REQUIREMENT.
CONNECTOR IMPEDANCE: X OHM ±15 OHM
CABLE IMPEDANCE: X OHM ±10 OHM
5. ALL MATERIAL AND PROCESS MUST BE MEET THE REQUIREMENT OF RoHS2.0
6. PART NUMBER:

320-10479-XX

LENGTH: 1=0.5M, 2=1.0M

IMPEDANCE: 0=85OHM, 1=92OHM, 2=100OHM

PROPOSAL DRAWING



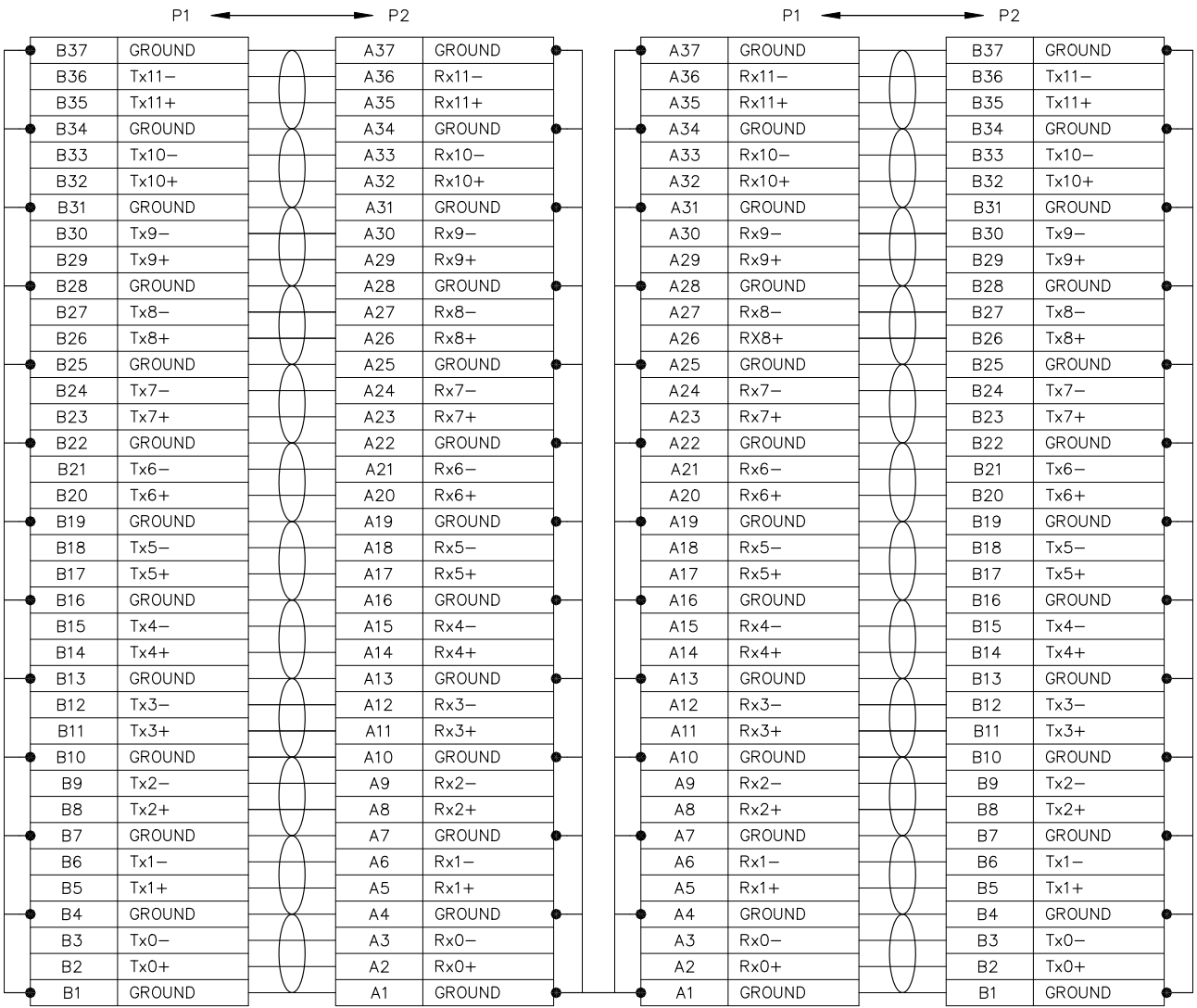
ITEM	DESCRIPTION	Q'TY	UNIT
	MCIO (x8 STR to x8 LSE)		
1	MCIO 8X LEFT SIDE TYPE	1	PCS
2	MCIO 8X STRAIGHT TYPE	1	PCS
3	EXPANDO TUBE.	A/R	MM
4	ACETATE TAPE COLOR: BLACK.	A/R	MM
5	LABEL.	1	PCS
6	LATCH.	2	PCS

320-10479-X1	PART NUMBER
0.5M±10mm	DIM A
320-10479-X2	PART NUMBER
1M±10mm	DIM A

QUALITY SYMBOLS
MAJOR Ⓢ
CRITICAL Ⓢ
GENERAL TOLERANCES (UNLESS SPECIFIED)
X. ±0.15
.X ±0.10
.XX ±0.05
.XXX ±0.02
ANGLES ±1°

DRAWN BY	DATE
Wu, Chia Yi	21'10/28
CHECKED BY	DATE
Chan, Ching Jung	21'10/28
APPROVED BY	DATE
Chan, Ching Jung	21'10/28
UNITS	
SCALE	1 : 1
SHEET NO.	1 OF 2

ACES ELECTRONICS	
TITLE	MCIO 74P STR To MCIO 74P LSE
SIZE	A4
REV	1
RFQ NO.	N/A
DWG NO.	320-10479-XX

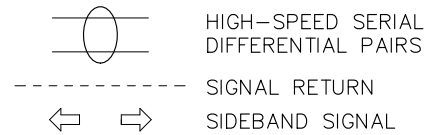


PROPOSAL DRAWING

COMPANY: ACES
 SERIAL NUMBER: XXXXXXXX
 PART NUMBER: 1234567890123456789

QR CODE

LABEL



QUALITY SYMBOLS MAJOR CRITICAL GENERAL TOLERANCES (UNLESS SPECIFIED) X. ±0.15 .X ±0.10 .XX ±0.05 .XXX ±0.02 ANGLES ±1°	DRAWN BY	DATE			
	Wu, Chia Yi	21/10/28			
	CHECKED BY	DATE	TITLE MCIO 74P STR To MCIO 74P LSE		
	Chan, Ching Jung	21/10/28			
APPROVED BY	DATE	UNITS	SIZE	RFQ NO.	
Chan, Ching Jung	21/10/28	mm	A4	N/A	
		SCALE	SHEET NO.	REV	DWG NO.
		1 : 1	2 OF 2	1	320-10479-XX