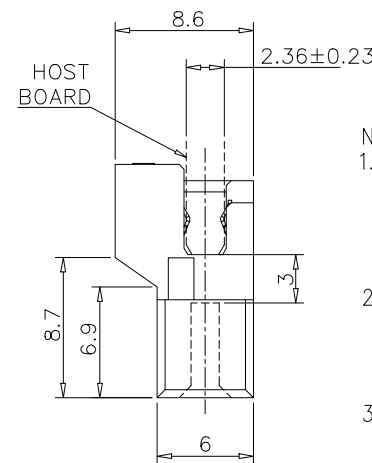
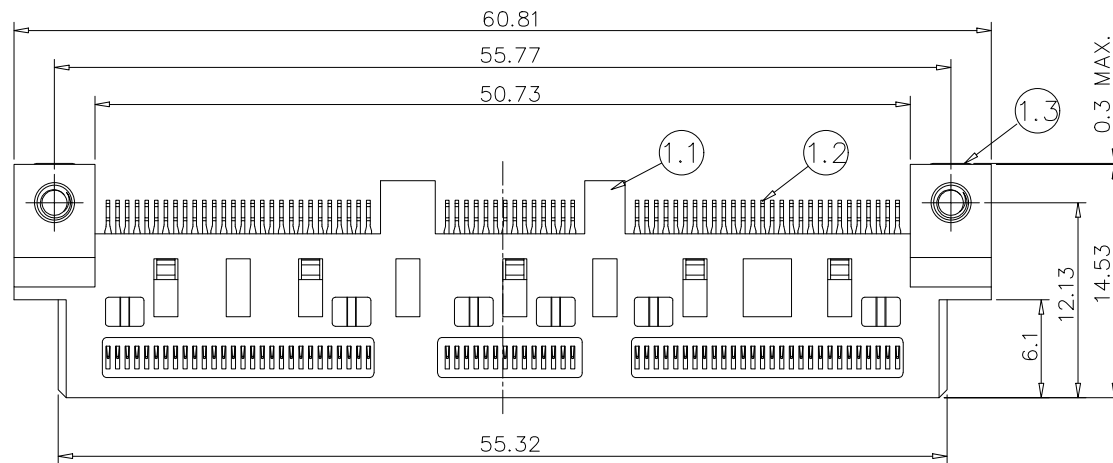


PROPRIETARY INFORMATION  
COMPANY CONFIDENTIAL

REV.	ECN.	NO.	DESCRIPTION	ENG	DATE
X1			INITIAL	Ethan	02/14/20'
X2			REMOVE SHEET 3	AXL	03/05/20'
X3			ADD NOTES 5	AXL	03/12/21'



NOTES :

1. MATERIAL :

1.1 HOUSING : THERMOPLASTIC, HIGH TEMP.,  
UL94V-0; COLOR : BLACK.

1.2 CONTACT : COPPER ALLOY

1.3 NUT PLATE : STEEL

2. FINISH :

CONTACT : GOLD 30u" PLATING.

SOLDER : GOLD FLASH PLATING.

50-100u" NICKEL UNDERPLATED OVERALL.

3. REFLOW SOLDER CAPABLE TO 260°C

4. RECOMMENDED SCREW SPEC.

SCREW SIZE: M2

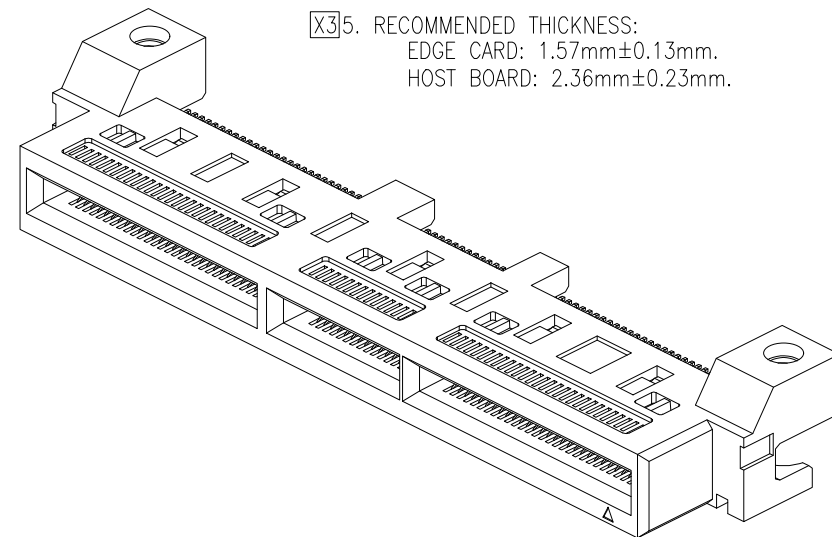
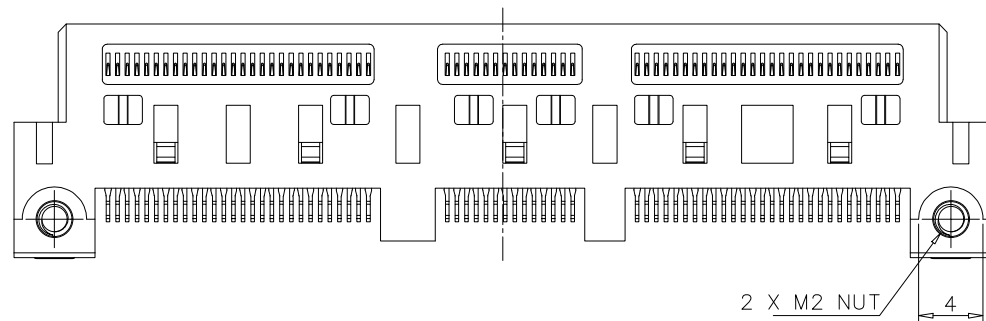
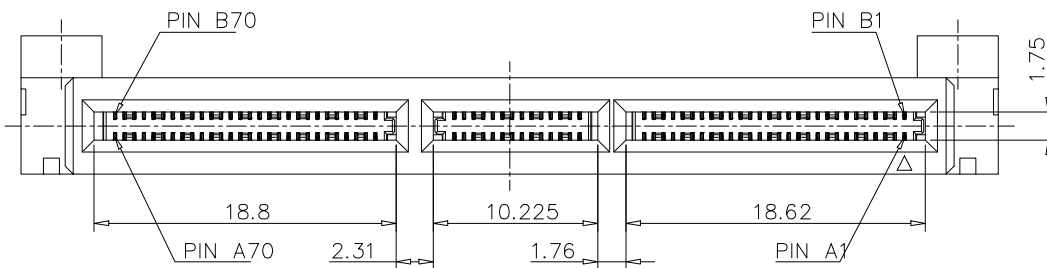
SCREW LENGTH: 6mm(REF.)

HEAD SIZE: 3.8mm(MAX.), HEIGHT=1.6mm(MAX.)

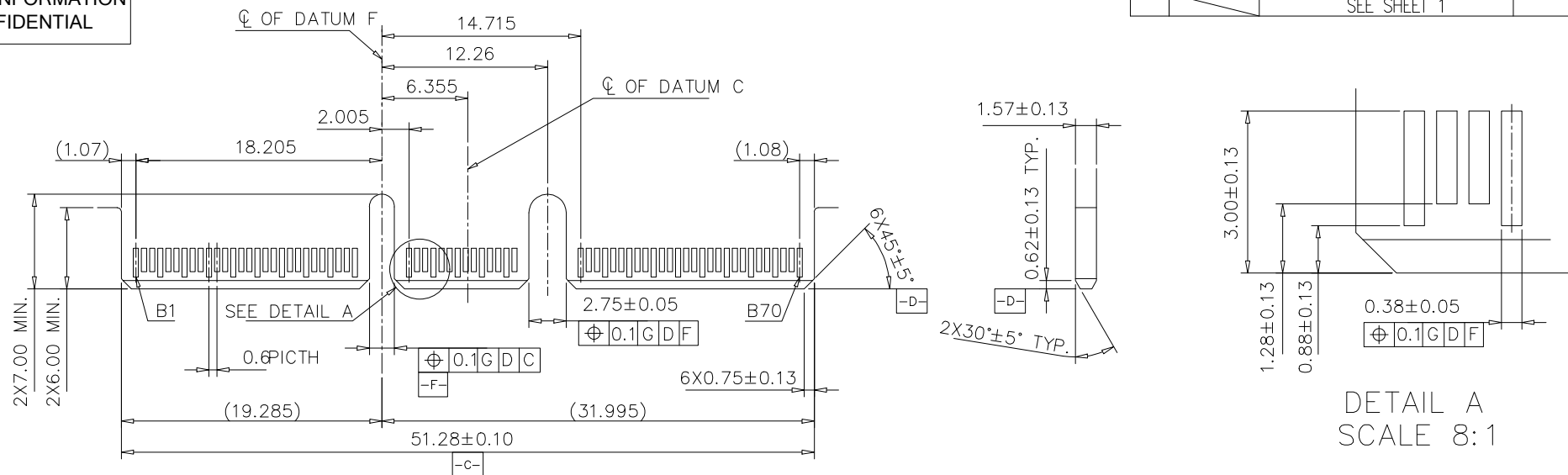
X3 5. RECOMMENDED THICKNESS:

EDGE CARD: 1.57mm±0.13mm.

HOST BOARD: 2.36mm±0.23mm.

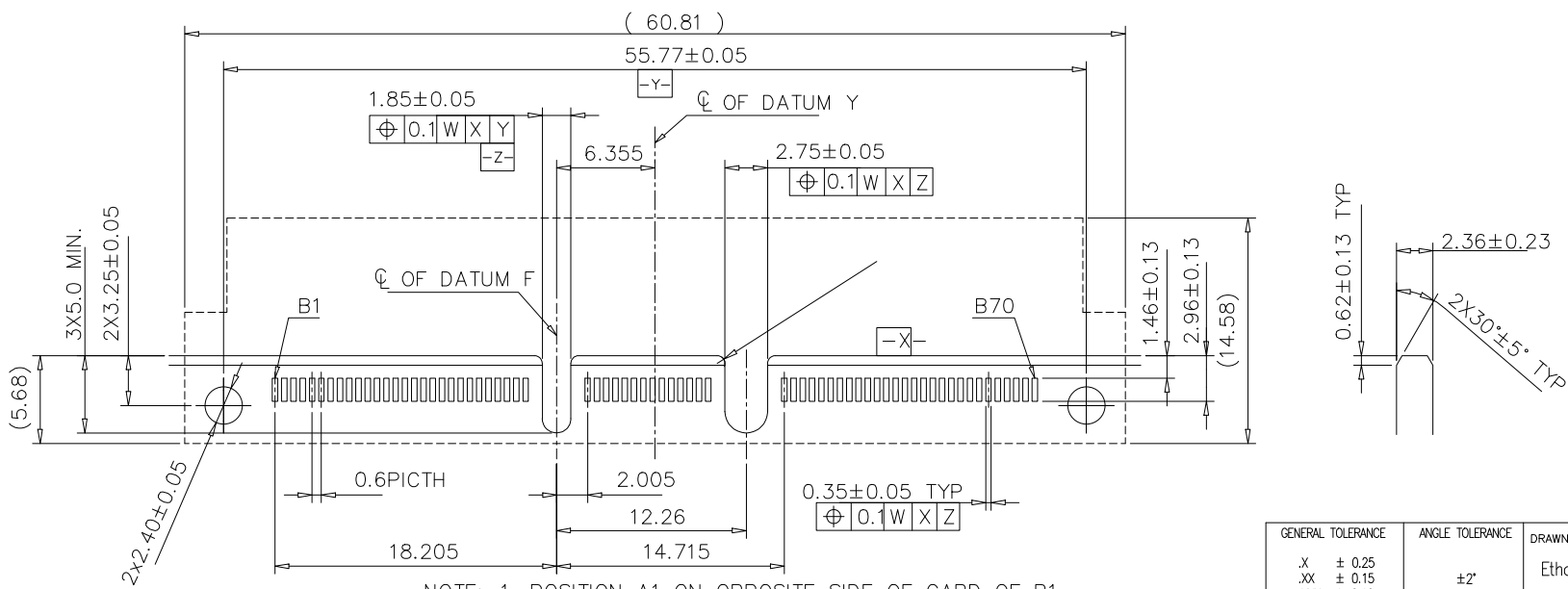


GENERAL TOLERANCE .X ± 0.25 .XX ± 0.15 .XXX ± 0.10	ANGLE TOLERANCE ±2°	DRAWN Ethan	DATE 02/14/20'	
MATL SEE BOM	FINISH SEE NOTES	CHECKED	DATE	
SCALE N/A	UNIT mm	APPROVED Hill	DATE 02/14/20'	PART NUMBER 106-10057-01
SHEET 1 OF 2				DRAWING NO. 106-10057
				SIZE A4
				REV. X3



NOTE: 1. POSITION A1 ON OPPOSITE SIDE OF CARD OF B1.  
2. DATUM G IS THE PCB SOLDER SURFACE.

RECOMMENDED EDGE CARD LAYOUT  
(BASE ON SFF-TA-1002 SPECIFICATION)



NOTE: 1. POSITION A1 ON OPPOSITE SIDE OF CARD OF B1.  
2. DATUM W IS THE PCB SOLDER SURFACE.

RECOMMENDED HOST BOARD LAYOUT  
(BASE ON SFF-TA-1002 SPECIFICATION)



GENERAL TOLERANCE .X ± 0.25 .XX ± 0.15 .XXX ± 0.10	ANGLE TOLERANCE ±2°	DRAWN Ethan	DATE 02/14/20'	
MATL SEE BOM	FINISH SEE NOTES	CHECKED	DATE	
SCALE N/A	UNIT mm	APPROVED Hill	DATE 02/14/20'	PART NUMBER 106-10057-01
SHEET 2 OF 2				DRAWING NO. 106-10057
				SIZE A4 REV. X3