

PROPRIETARY INFORMATION
COMPANY CONFIDENTIAL

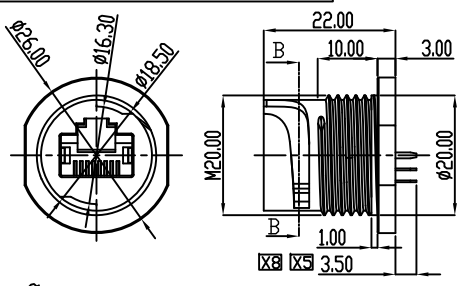
A

B

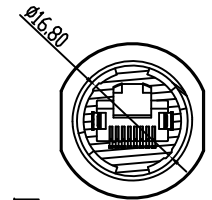
C

D

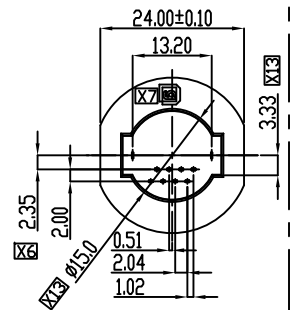
E



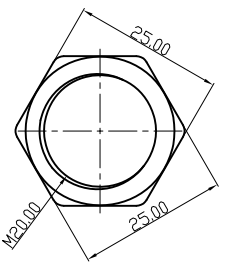
Female



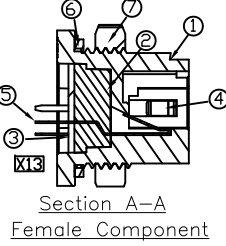
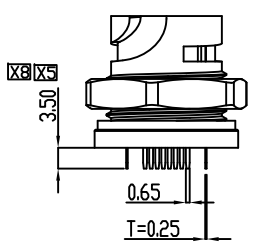
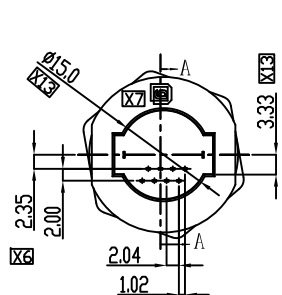
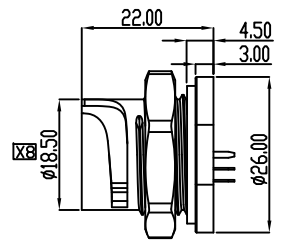
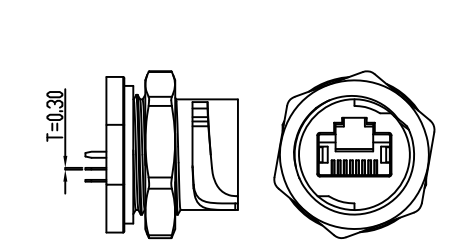
Section B-B



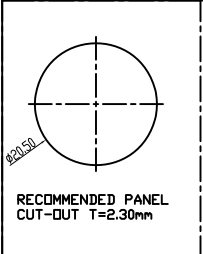
NUT



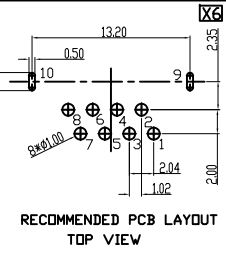
Waterproof Circle 001



Section A-A
Female Component



RECOMMENDED PANEL
CUT-OUT T=2.30mm



RECOMMENDED PCB LAYOUT
TOP VIEW

REV.	ECN. NO.	DESCRIPTION	ENG	DATE
X1		INITIAL	Knight	06/18/15'
X2		UPDATE DRAWING	Knight	07/10/15'
X3		UPDATE DRAWING	Knight	07/15/15'
X4		UPDATE DRAWING	Knight	08/14/15'
X5		UPDATE DRAWING	Dan	10/15/15'
X6		Modify PCB Layout	Dan	11/05/15'
X7		Modify Logo Position	Dan	11/11/15'
X8		Design Changed	Tim	03/28/16'
X9		Add Note 10	Tim	07/08/16'
X10		Correct	Tim	07/12/16'
X11		Add Section	Tim	08/18/16'
X12		Change Notes 2	Hill	10/25/17'
X13		Design Changed	Yuan	05/24/18'

NOTES:

1. Current Rating:1.5Amp max @25 °C
- X12 2. Voltage Rating:48VDC
3. Insulation Resistance:500 megohms min
4. Contact Resistance:30 milliohms max
5. Withstanding Voltage:1000 VAC
6. Durability:750 Cycles
7. Operating Temperature:-40 °C~+85 °C
8. Storage Temperature:-50 °C~+75 °C
9. Waterproof rate:IP67
- X9 10. Torque range:15~20 lb.in

ORDER INFORMATION

WAPV-22 08 - A K 1 0 T
① ② ③ ④ ⑤ ⑥ ⑦

1. TYPE:
WAPV-22:WATERPROOF RJ45 FEMALE
2. POSITIONS:
08:08 POSITIONS
3. INSULATOR MATERIAL:
A: PBT
4. INSULATOR COLOR:
K: BLACK
5. CONTACT PLATING:
1: GOLD FLASH
6. SHIELD PLATING:
0: NONE SHIELD
7. PACKING
T: TRAY

X10

ITEM	NAME	Q'TY	DESCRIPTION	NOTE
7	NUT	1	PBT+30%G.F	BLACK,JUL94 V-0
6	WATERPROOF CIRCLE	2	SILICA GEL	Nature
5	8Pin CONTACT	8	PHOSPHOR BRONZE,GOLD FLASH PLATING OVER 60u" MIN NICKEL UNDER PLATING OVERALL,MATTE 120u" MIN PLATING OVER DIP AREA	T=0.30
4	GROUNDING SHRAPNEL	2	BRASS,NICKEL 60u" MIN PLATING OVERALL	T=0.25
3	WATERPROOF GLUE	1	LIQUID STATE SILICA GEL	BLACK
2	MOLDING BACK STOPPLE	1	PBT+30%G.F	BLACK,JUL94 V-0
1	HOUSING	1	PBT+30%G.F	BLACK,JUL94 V-0

GENERAL TOLERANCE	ANGLE TOLERANCE	DRAWN	DATE	GENESIS TECHNOLOGY,INC	
X± 0.50	X°± 5.0°	Yuan	05/24/18'	TITLE	Waterproof RJ45 Female
.X± 0.38	.X°± 3.0°	CHECKED	DATE	PART NUMBER	
.XX± 0.25	.XX°± 2.0°	APPROVED	DATE	DRAWING NO.	WAPV-2208-AK10T
.XXX± 0.15	.XXX°± 1.0°	Vegas	05/24/18'	GT26-210507	SIZE A4 REV:X13
MATERIAL					
FINISH					
SCALE	N/A	UNIT	mm		
SHEET	1 OF 1				