

PROPRIETARY INFORMATION
COMPANY CONFIDENTIAL

REV.	ECN. NO.	DESCRIPTION	ENG	DATE
A		INITIAL	Hill	10/18/17'
B		Correct	Hill	11/02/17'
C		Change Material and Correct	Hill	12/11/17'
D		Add Reflow SPEC	Hill	1/18/18'
E		Add Detailed Spec	Hill	1/31/18'
F		Change IR Reflow SPEC	Hill	2/2/18'
G		Change posts and pins	Yin	4/12/18'
H		Change layout number	Yin	4/16/18'
I		Change color number	Yin	5/22/18'

NOTES:

ELECTRICAL:

- VOLTAGE RATING: 125 VAC RMS MIN.
- CURRENT RATING: 1.5 AMP MIN.
- CONTACT RESISTANCE: 30 MILLIOHMS MAX.
- INSULATION RESISTANCE: 1000 MEGOHMS
- DIELECTRIC STRENGTH: 1000VDC RMS 60Hz, 1MIN.

MECHANICAL:

- ☐ 1. HOUSING MATERIAL: PA9T,UL94V-0,COLOR SEE OPTION
- 2. CONTACT MATERIAL: PHOSPHOR BRONZE $\phi 0.46\text{mm}$.
- 3. PLATING: GOLD FLASH PLATING OVER 50μ " NICKEL.
- 4. OPERATING LIFE: 750 CYCLES MIN.

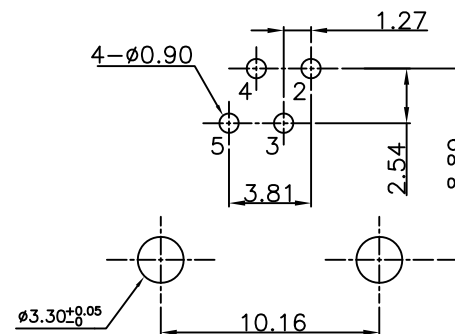
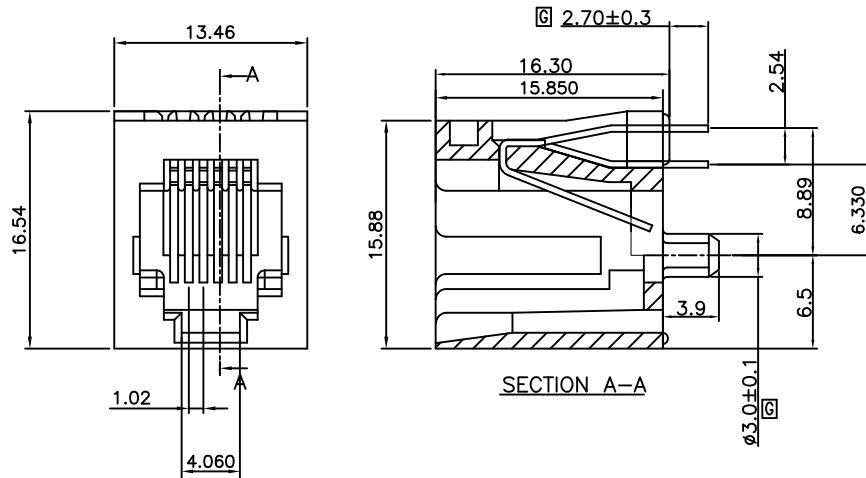
ENVIRONMENTAL:

- 1. STORAGE: -40°C TO $+85^{\circ}\text{C}$.
- 2. OPERATION: -40°C TO $+85^{\circ}\text{C}$.
- ☐☐ 3. IR REFLOW TEMPERATURE: $260^{\circ}\text{C}\pm 5$
- 4. RoHS COMPLIANT.

MATES WITH MODULAR PLUG CONFORMING TO FCC PART 68, SUBPART F.
Color Option

203-10013-0X

01:Black
02:Purple(2577C) ☐



☐ PC Board Layout
Component Side Shown
Dimension Tolerance: ± 0.05



GENERAL TOLERANCE .X± .X± 0.30 .XX± 0.20 .XXX± 0.10	ANGLE TOLERANCE X°± 2.0° .X°± 1.0° .XX°± .XXX°±	DRAWN Hill	DATE 2/2/18'		TITLE RJ14 1X1 Vertical 6p4c
MATL SEE BOM	FINISH SEE BOM	CHECKED	DATE		PART NUMBER 203-10013-0X
SCALE N/A	UNIT mm	APPROVED Hill	DATE 2/2/18'	DRAWING NO. 203-10013	SIZE A4 REV. 1
SHEET 1 OF 2					

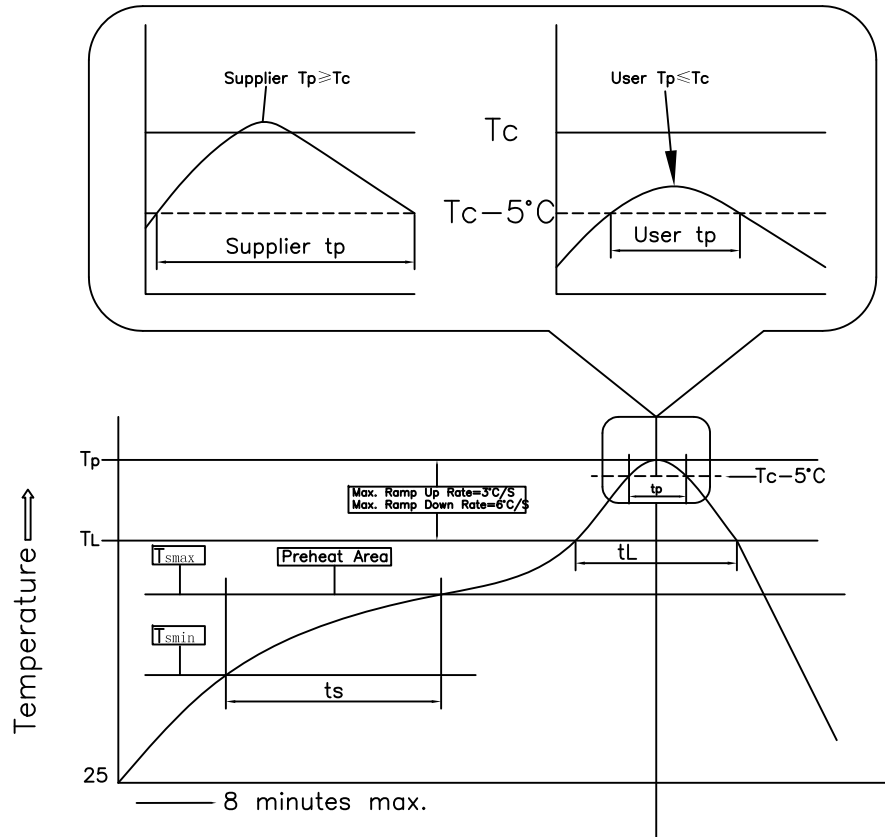
PROPRIETARY INFORMATION
COMPANY CONFIDENTIAL

REV.	ECN. NO.	DESCRIPTION	ENG	DATE
A		INITIAL	Hill	10/18/17'
B		Correct	Hill	11/02/17'
C		Change Material and Correct	Hill	12/11/17'
D		Add Reflow SPEC	Hill	1/18/18'
E		Add Detailed Spec	Hill	1/31/18'
F		Change IR Reflow SPEC	Hill	2/2/18'
G		Change posts and pins	Yin	4/12/18'
H		Change layout number	Yin	4/16/18'
I		Change color number	Yin	5/22/18'

FEED

Reflow Soldering Conditions:

Profile Feature	Pb-Free Assembly
Preheat & Soak Temperature min (T_{smin}) Temperature max (T_{smax}) Time (T_{smin} to T_{smax}) (t_s)	150°C 200°C 60-120 seconds
Average ramp-up (T_{smax} to T_p)	3°C/seconds max.
Liquidous temperature (T_L) Time at liquidous (t_L)	217°C 60~150 seconds
Peak packing body temperature (T_p)*	260 ±5°C
Time(t_p)** within 5°C of the specified classification temperature(T_c)	30** seconds
Average ramp-down rate (T_p to T_{smax})	6°C/seconds max.
Time 25°C to peak temperature	8 minutes max.



GENERAL TOLERANCE X.± .X± 0.30 .XX± 0.20 .XXX± 0.10	ANGLE TOLERANCE X°± 2.0° .X°± 1.0° .XX°± .XXX°±	DRAWN Hill	DATE 2/2/18'		TITLE. RJ14 1X1 Vertical 6p4c
MATL SEE BOM	FINISH SEE BOM	CHECKED	DATE		PART NUMBER. 203-10013-0X
SCALE N/A	UNIT mm	APPROVED Hill	DATE 2/2/18'	DRAWING NO. 203-10013	SIZE A4 REV. /
SHEET 2 OF 2					