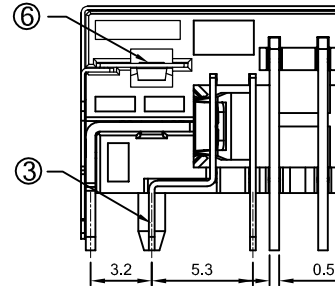
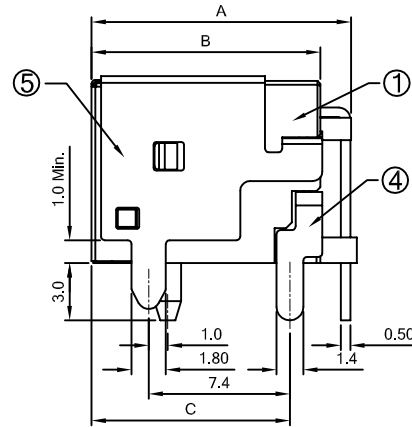
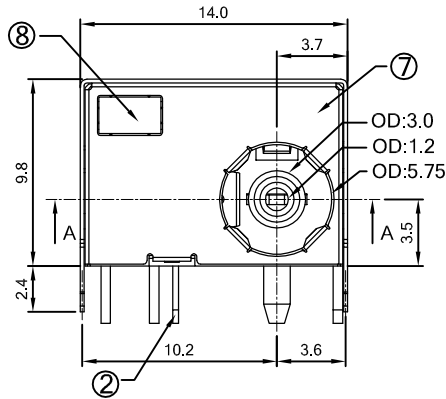


PROPRIETARY INFORMATION
COMPANY CONFIDENTIAL

P/N	A	B	C	D
151-10042-01	13.5	11.9	10.3	3.9
151-10042-02	13.6	12.0	10.4	4.0
151-10042-03				

SPECIFICATION

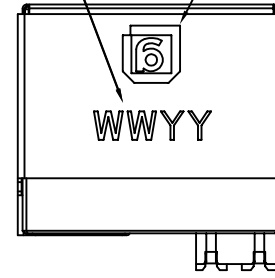
- VOLTAGE RATING: 24V & 5A
- CONTACT RESISTANCE: 30 mΩ(MAX.)
- INSULATION RESISTANCE: 100MΩ MIN. @ DC250V
- OPERATION TEMPERATURE: -25°C~95°C
- WITHSTAND VOLTAGE: 500VAC
- INSERTION FORCE: 3.0kgf (MAX.)
- EXTRACTION FORCE: 0.3kgf (MIN.)
- LIFE TESTING: 5,000 CYCLES
- SOLDERING PROCESS: PARTS WILL WITHSTAND 260°C/5Sec.
- EIAJ RC-5320A COMPLIANT.
- RoHS 6/6 COMPLIANT.



151-10042-0X

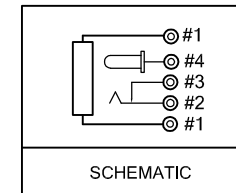
- 01: Without Front cover
- 02: Bright nickel plating for Front cover
- 03: Black nickel plating for Front cover

Date Code (OPTION)
WW:WEEK(01~52)
YY:YEAR(10~)

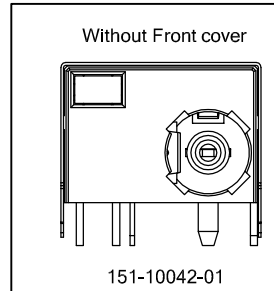


TOP VIEW

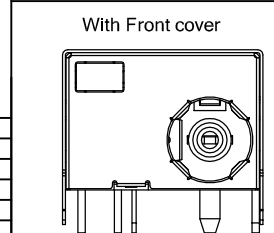
GREEN
5+ — (LED symbol) — 6



SCHEMATIC



151-10042-01



151-10042-02
151-10042-03

LED CHARACTERISTIC

ITEMS	RATING
POWER DISSIPATION	120mW MAX.
FORWARD CURRENT(DC)	20mA MAX.
FORWARD VOLTAGE(V)	3.1V ± 0.5V
PEAK FORWARD CURRENT	100mA MAX.
REVERSE VOLTAGE	5V MAX.
DOMINANT WAVELENGTH(nm)	522±5nm TYP.
LUMINOUS INTENSITY(mcd)	55 mcd ± 35 mcd
OPERATION TEMPERATURE	-40°C TO +95°C
STORAGE TEMPERATURE	-40°C TO +100°C

GENERAL TOLERANCE	ANGLE TOLERANCE	DRAWN	DATE
X.±0.5	X°±2°	TERRY	10/24/16'
.X±0.3	.X°±1°	DESIGN	DATE
.XX±0.2	.XX°±	TERRY	10/24/16'
.XXX±	.XXX°±	CHECKED	DATE
MATERIAL SEE BOM		PART NUMBER. 151-10042-XX	
FINISH SEE NOTES		DRAWING NO. 151-10042	
SCALE N/A	UNIT mm	SIZE A4	
SHEET 1 OF 2		REV. X4	

genesis
connected solutions

TITLE: DC POWER JACK WITH LED

PART NUMBER: 151-10042-XX

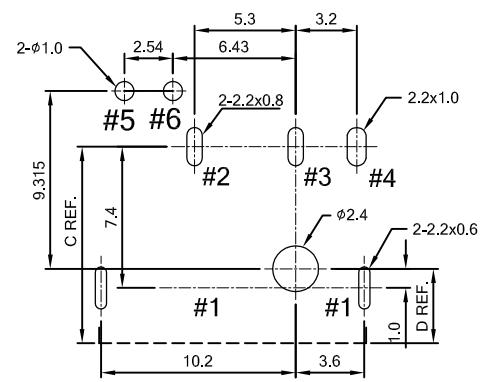
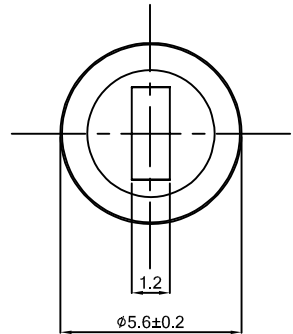
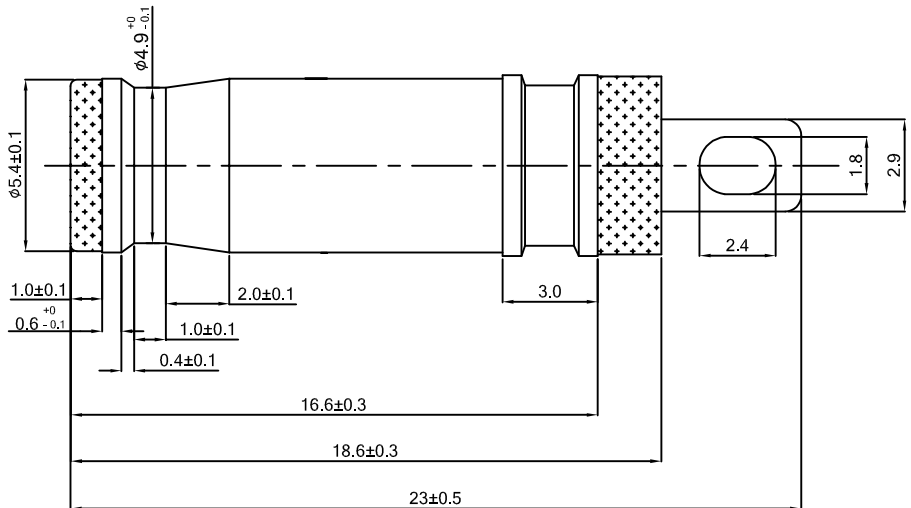
DRAWING NO. 151-10042

SIZE A4

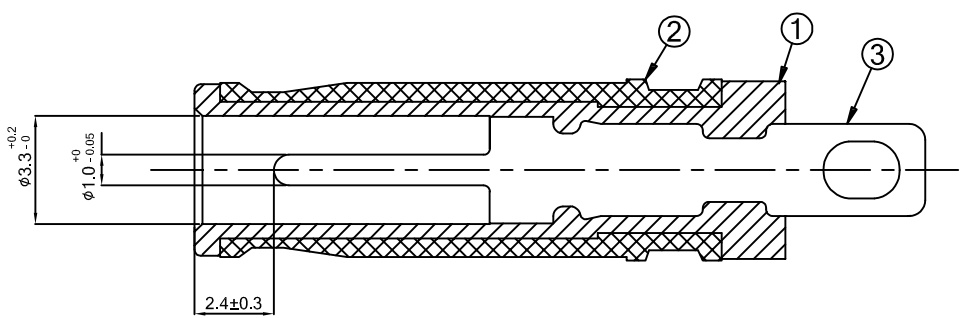
REV. X4

ITEM	NAME	QTY	MATERIAL	PLATING & COLOR	NOTE
8	LED	1		GREEN	
7	FRONT COVER	1	SUS, T=0.1mm	NICKEL PLATING	
6	EARTH TERMINAL	1	SUS, T=0.2mm	NICKEL PLATING	
5	CONTACT FOOT#1	1	BRASS, T=0.2mm	Tin 80u" MIN. OVER Ni 30u" MIN.	
4	TERMINAL #4	1	PHOSPHOR BRONZE T=0.5mm	Tin 80u" MIN. OVER Ni 30u" MIN.	
3	TERMINAL #3	1	BRASS, T=0.3mm	Tin 80u" MIN. OVER Ni 30u" MIN.	
2	TERMINAL #2	1	PHOSPHOR BRONZE T=0.3mm	Tin 80u" MIN. OVER Ni 30u" MIN.	
1	HOUSING	1	PA9T, UL94V-0	BLACK	

REV.	ECN. NO.	DESCRIPTION	ENG	DATE
X1		ISSUED	TERRY	10/24/16'
X2		MODIFY LED CHARACTERISTIC	TERRY	10/25/16
X3		MODIFY LED CHARACTERISTIC	TERRY	10/26/16
X4		MODIFY OPERATION TEMPERATURE	TERRY	10/27/16



With LED Connector Recommend PCB Layout
 Jack Top View
 Tolerance: ±0.05mm
 Recommend PCB Thickness 1.6mm



RECOMMENDED PLUG

NOTES

1. DIELECTRIC STRENGTH: AC 500V AT 1 MINUTE
2. INSULATION RESISTANCE: DC 500V/100M OHMS MIN.
3. RATED VOLTAGE: 20V DC.
4. RATED CURRENT: 8 AMPS.

ITEM	MATERIAL	Q'TY	THICKNESS	PLATING	NOTE
3	BRASS		2um MIN	NICKEL	
2	BRASS		2um MIN	NICKEL	
1	PBT			BLACK	

GENERAL TOLERANCE >40 ±0.5 18~40 ±0.4 6~18 ±0.3 1~6 ±0.2 0~1 ±0.1	ANGLE TOLERANCE X°± .X°± .XX°± .XXX°±	DRAWN TERRY	DATE 10/24/16'	
MATL SEE BOM	FINISH SEE NOTES	DESIGN TERRY	DATE 10/24/16'	
SCALE N/A	UNIT mm	CHECKED	DATE	TITLE DC POWER JACK WITH LED
SHEET 2 OF 2		APPROVED	DATE	PART NUMBER 151-10042-XX
				DRAWING NO. 151-10042
				SIZE A4
				REV. X4