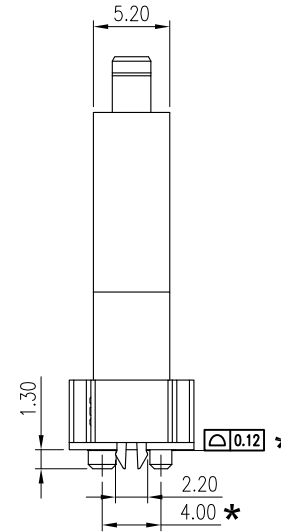
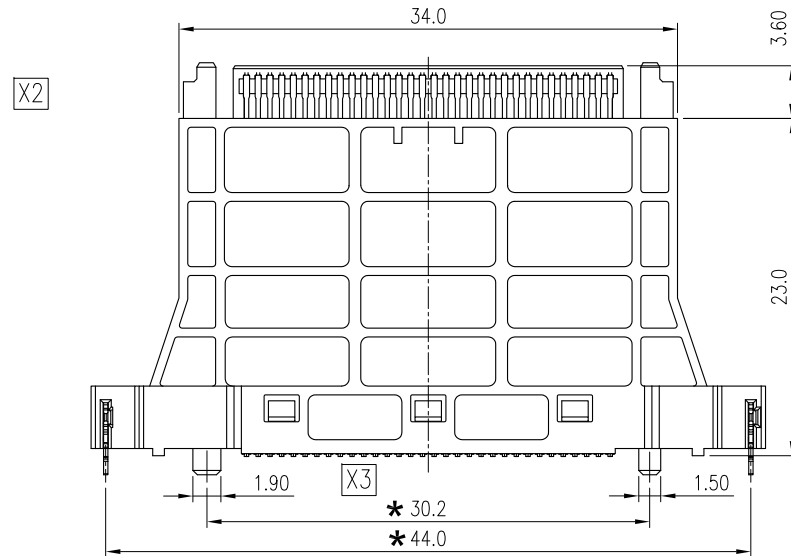
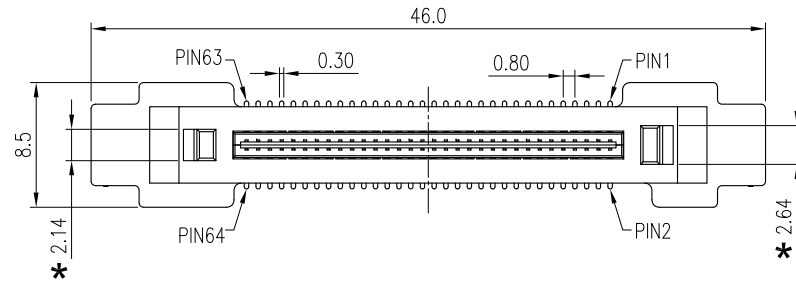


PROPRIETARY INFORMATION
COMPANY CONFIDENTIAL

REV.	ECN. NO.	DESCRIPTION	ENG	DATE
X1		INITIAL	AXL	7/6/2016
X2		REVISE DWG	TERRY	7/7/2016
X3		REVISE DWG	JANE	8/6/2016
X4		ADD SPEC	YIN	9/18/2018
X5		REVISE PCB DIMENSION	YIN	5/17/2019
X6		ADD KEY DIMENSION NUMBERS	TERRY	8/14/2019



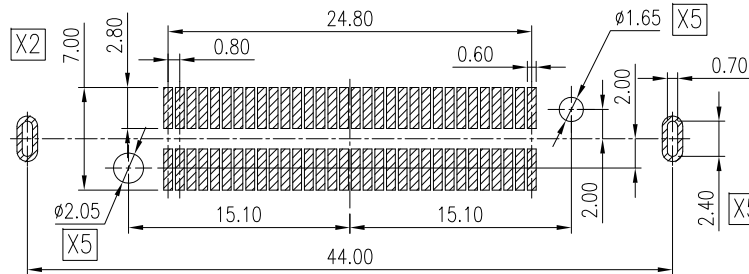
NOTES :

- MATERIAL
HOUSING: LCP, UL94V-0, BLACK
TERMINAL: BRASS
BOARDLOCK: BRASS
- PLATING:
TERMINAL:
CONTACT AREA: GOLD PLATING
SOLDER TAIL: 80u" TIN PLATING
UNDER PLATING: 30u" NICKEL OVERALL
BOARDLOCK: 80u" TIN PLATING; UNDER PLATING: 30u" NICKEL OVERALL.
- CURRENT RATING: 0.5A
- DIELECTRIC WITHSTANDING VOLTAGE: 500VAC FOR 1 MINUTE.
- INSULATION RESISTANCE: 100Mohms min.
- 5Gbps min. COMPLIANT.
- DESIGN TO MATE WITH 110-10008.
- TRAY PACKAGING.
- MARK * IS KEY DIMENSION

X4 PART. NUMBER

110-10013-XX

- 01: GOLD FLASH PLATING
- 02: 30u" Au PLATING



RECOMMENDED PCB LAYOUT
TOLERANCE: ±0.05mm

GENERAL TOLERANCE X.± 0.50 .X± 0.40 .XX± 0.30 .XXX± 0.20	ANGLE TOLERANCE X°± 5.0° .X°± 3.0° .XX°± 2.0° .XXX°± 1.0°	DRAWN JANE	DATE 8/6/16'	
MATERIAL SEE BOM		CHECKED	DATE	
FINISH SEE NOTES		APPROVED		PART NUMBER: 110-10013-XX
SCALE N/A	UNIT mm	SHEET 1 OF 1		DRAWING NO. 110-10013
				SIZE A4 REV. X6