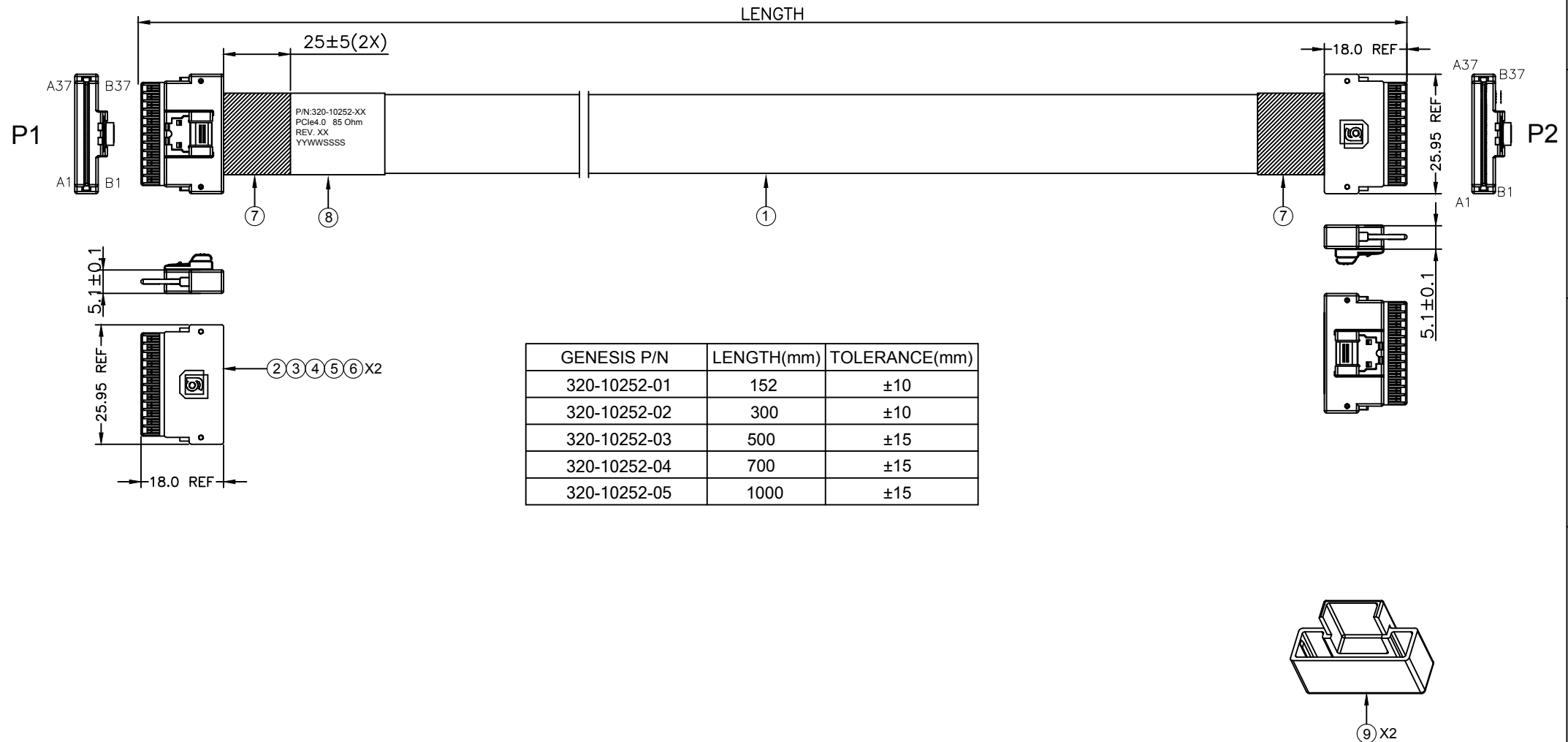


PROPRIETARY INFORMATION
COMPANY CONFIDENTIAL

REV.	ECN. NO.	DESCRIPTION	ENG	DATE
X1		ISSUED	KYLE	12/03/2018
X2		ADD NEW LENGTHS TO P/N TABLE	KYLE	3/07/2019
X3		UPDATE P/N TABLE	KYLE	3/07/2019

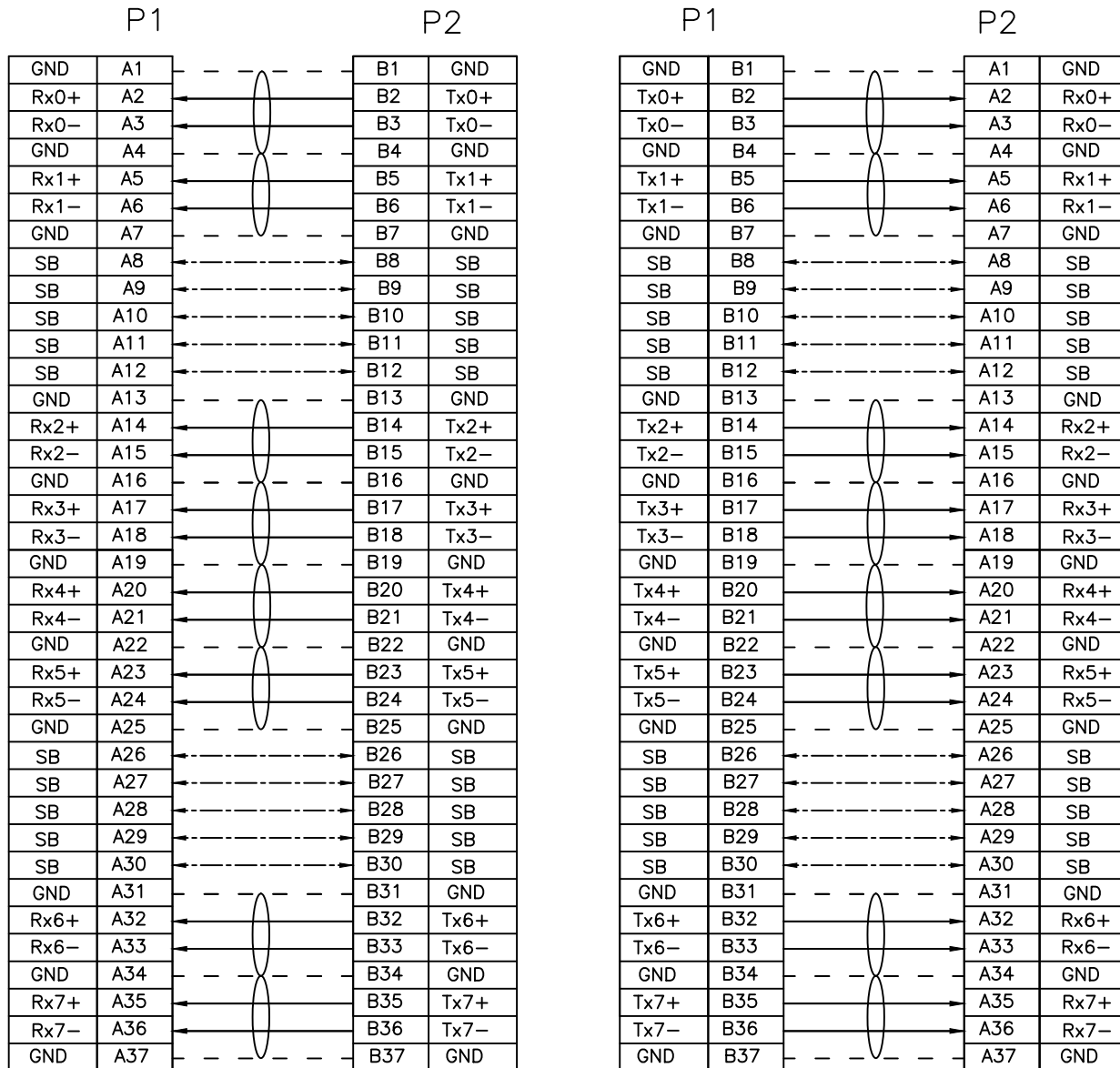


ITEM	NAME	Q'TY	DESCRIPTION	NOTE
9	DUST CAP	2	DUST CAP FOR SFF-8654 8i, PE, NATURAL	
8	LABEL	1	WHITE LABEL, 60*30MM(REF)	
7	ACETATE TAPE	A/R	ACETATE TAPE, W=25MM, BLACK	
6	RIVET	4	RIVET FOR SFF-8654	
5	LATCH	2	LATCH FOR SFF-8654	
4	HOUSING	2	HOUSING FOR SFF-8654 8i STR, BLACK	
3	INNER MOLD	2	INNER MOLDING FOR SFF-8654 8i STR, BLACK	
2	8654 8i PCB	2	PCB FOR SLIMSAS 8i STR, AU30u"	
1	FLAT CABLE	A/R	FLATFAST, 32AWG, 85 Ohm	

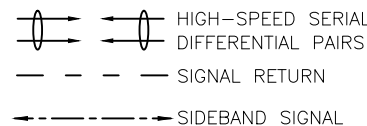
RoHS Compliant

GENERAL TOLERANCE X ± .X ± 0.40 .XX ± 0.30 .XXX ± 0.20	ANGLE TOLERANCE X° ± 5.0° .X° ± 3.0° .XX° ± 2.0° .XXX° ± 1.0°	DRAWN KYLE	DATE 3/07/2019	
MATERIAL SEE BOM		CHECKED	DATE	
FINISH SEE BOM		APPROVED		PART NUMBER 320-10252-XX
SCALE N/A	UNIT mm			DRAWING NO. 320-10252
SHEET 1 OF 2				SIZE A4 REV. X3

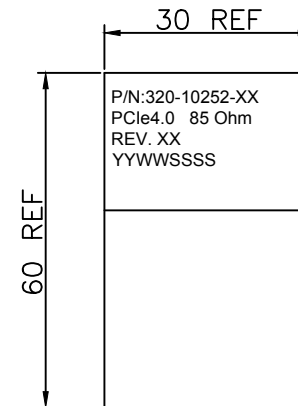
WIRING TABLE



A1,A4,A7,A13,A16,A19,A22,A25,A31,A34,A37,
B1,B4,B7,B13,B16,B19,B22,B25,B31,B34,B37 Grounded on PCB



LABEL INFORMATION



FONT: ARIAL
HEIGHT: 2.0mm Min

TEST CONDITIONS:

- 100% OPEN & SHORT & MISS-WIRING & INTERMITTENCE TEST.
- CONDUCTIVE RESISTANCE: 3Ω MAX.
- INSULATION RESISTANCE: 10 MΩ
- HI-POT TEST: 300VDC FOR 10ms.
- THIS PRODUCT MEETS PCIe 4.0

RoHS Compliant

GENERAL TOLERANCE X ± .X ± 0.40 .XX ± 0.30 .XXX ± 0.20	ANGLE TOLERANCE X° ± 5.0° .X° ± 3.0° .XX° ± 2.0° .XXX° ± 1.0°	DRAWN KYLE	DATE 3/07/2019	genesis connected solutions TITLE: SlimSAS 8i STR Cable Ass'Y PCIe4.0, FLATFAST 85 Ohm PART NUMBER: 320-10252-XX DRAWING NO. 320-10252 SIZE A4 REV. X3
MATL SEE BOM	FINISH SEE BOM	CHECKED	DATE	
SCALE N/A	UNIT mm	APPROVED	DATE	
SHEET 2 OF 2				