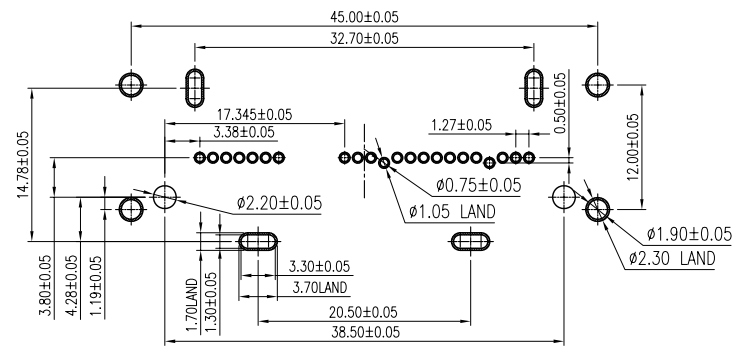
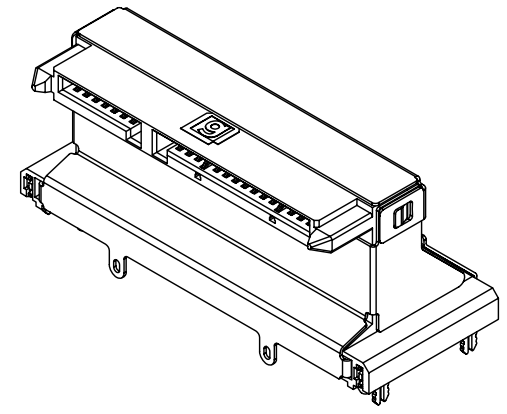
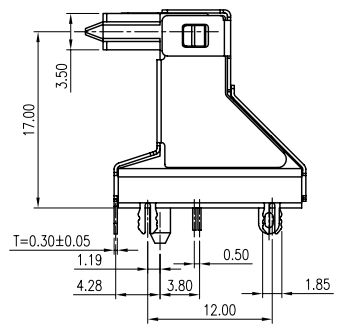
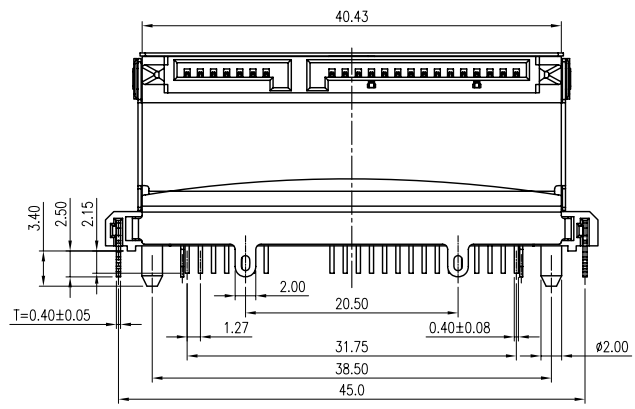
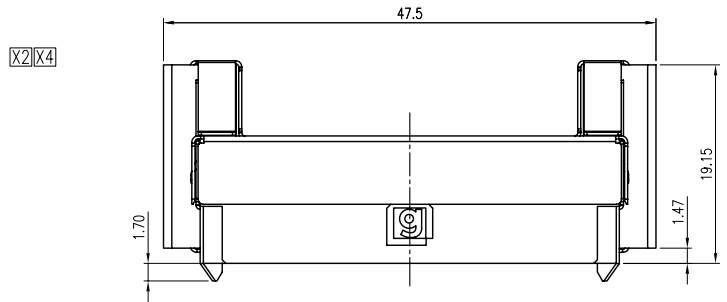


REV.	ECN. NO.	DESCRIPTION	ENG	DATE
X1		ISSUED	DANIEL	04/10/12'
X2		MODIFY SHIELD	PAT	05/22/12'
X3		ADD 5u" GOLD PLATING	DANIEL	06/22/12'
X4		REVISE DRAWING AND PART. NUMBER	DANIEL	07/12/12'



RECOMMEND PC BOARD MOUNTING DIMENSIONS t=1.60mm

NOTES:

1. Material:

Housing: UL 94V-0 rated;
 Contact: Phosphor Bronze
 Plating: Gold Plating over Nickel on contact area.
 Tin plating on Solder Tail.
 Board Lock: Copper alloy
 Plating: Tin plating overall
 SHIELD: SK5
 Plating: Ni plating overall

2. Mechanical

Insertion Force:20N max.
 Withdrawal Force:4N min.
 Durability:500 cycles

3. Electrical Specification

Operation Voltage:100 VAC max.
 Current Rating:1.5 Ampere per contact.
 Contact Resistance:50 REF. Milliohms min.
 Insulation Resistance: 1000 Megohms min.
 Dielectric Withstanding Voltage: 500 VAC.

4. Environmental

Operating Temperature:-40°C to +85°C
 5. RoHS Compliant.

PART. NUMBER

SATR-42 22 - B K X 3 I 01

- ① CONNECTOR:
SATR-42: SATA, 7+15PIN, WITH SHIELD
- ② POSITION:
22: 22 POSITIONS
- ③ INSULATOR MATERIAL:
B: LCP
- ④ INSULATOR COLOR:
K: BLACK
- ⑤ CONTACT PLATING:
1: GOLD FLASH
X3 3: 5u" GOLD
5: 15u" GOLD
- ⑥ SHIELD PLATING
X4 3: NICKEL PLATING
- ⑦ PACKING
T: TRAY

GENERAL TOLERANCE X.±0.50 .X±0.38 .XX±0.25 .XXX±0.15	ANGLE TOLERANCE X°± 2° .X°± 1° .XX°± .XXX°±	DRAWN DANIEL	DATE 07/12/12'	
MATERIAL SEE BOM		DESIGN DANIEL	DATE 07/13/12'	
FINISH SEE NOTES		CHECKED	DATE	PART NUMBER. SATR-4222-BKX3T01
SCALE N/A	UNIT mm	APPROVED	DATE	DRAWING NO. GT17-250105
SHEET 1 OF 1				SIZE A4 REV. X4