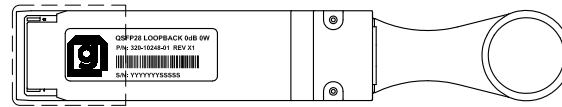
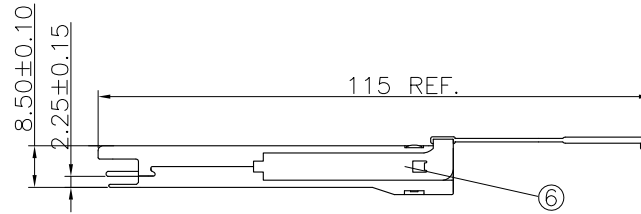
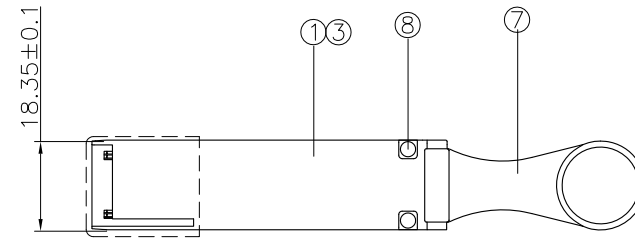
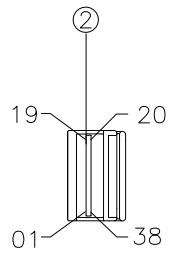


PROPRIETARY INFORMATION  
COMPANY CONFIDENTIAL

REV.	ECN. NO.	DESCRIPTION	ENG	DATE
X1		INITIAL	Jackyjet	12/03/2018



LABEL INFORMATION ④



— Description  
— PN and REV  
— CODE 128, CONTENTS:  
YYYYYYSSSSS

S/N: YYYYYYSSSSS

Serial number

PO number

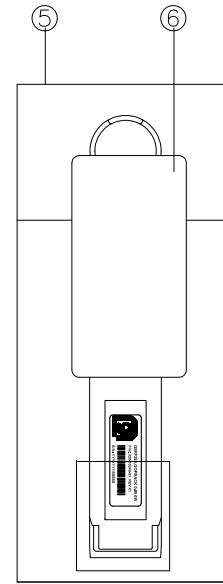
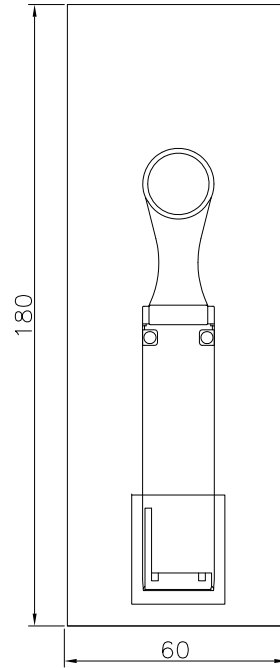
8	M-QS1ALOT-02	2	RIVET
7	P-QSPNY-0005-2	2	PULL TAB
6	O-SP-C-0001	2	SPRING
5	O-PB-S-0017	1	ESD BAG LABELS
4	L-05-S-0003	1	SHELL BARCODE LABELS
3	P-ZQPST-0006-BG	1	INNER MOLDING FOR QSFP28LB
2	A-QS10030-03	1	QSFP28LB PCB
1	M-QS1ZANI-08/09	1	QSFP28LB CONNECTOR
ITEM	NAME	Q'TY	DESCRIPTION

RoHS Compliant

GENERAL TOLERANCE	ANGLE TOLERANCE	DRAWN	DATE	
X.± 0.50 .X± 0.20 .XX± 0.10 .XXX± 0.05	X°± 5.0° .X°± 3.0° .XX°± 2.0° .XXX°± 1.0°	Jackyjet	12/03/18'	
MATL	SEE BOM	CHECKED	DATE	PART NUMBER: 320-10248-01
FINISH	SEE NOTES	APPROVED	DATE	DRAWING NO. 320-10248
SCALE	N/A	SHEET	1 OF 4	SIZE <b>A4</b> REV. <b>X1</b>

PROPRIETARY INFORMATION  
COMPANY CONFIDENTIAL

6	7	8
REV. ECN. NO.	DESCRIPTION	ENG DATE
X1	INITIAL	Jackyjet 12/03/2018

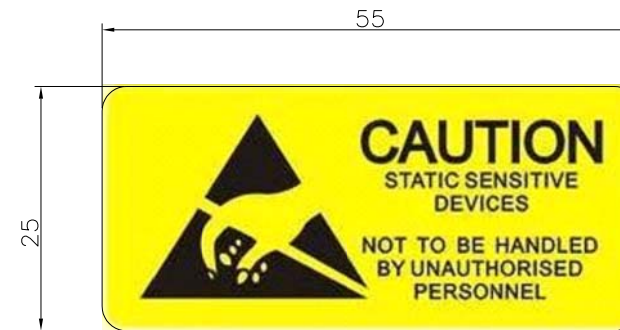


WIRING TABLE

P1		P1	
GND(TX)	01	20	GND(RX)
TX2n	02	21	RX2n
TX2p	03	22	RX2p
GND(TX)	04	23	GND(RX)
TX4n	05	24	RX4n
TX4p	06	25	RX4p
GND(TX)	07	26	GND(RX)
GND(RX)	13	32	GND(TX)
RX3p	14	33	TX3p
RX3n	15	34	TX3n
GND(RX)	16	35	GND(TX)
RX1p	17	36	TX1p
RX1n	18	37	TX1n
GND(RX)	19	38	GND(TX)

LOW SPEED SIGNALS	
P1	
08	ModSell
09	ResetI
10	VccRx
11	SCL
12	SDA
27	ModPrsL
28	IntL
29	VccTx
30	Vcc1
31	LPMoDe

⑥ ESD BAG LABEL



RoHS Compliant

<b>GENERAL TOLERANCE</b> X.± 0.50 .X± 0.20 .XX± 0.10 .XXX± 0.05	<b>ANGLE TOLERANCE</b> X°± 5.0° .X°± 3.0° .XX°± 2.0° .XXX°± 1.0°	<b>DRAWN</b> Jackyjet	<b>DATE</b> 12/03/18'		<b>TITLE.</b> QSFP28 COPPER LOOPBACK 100G DATA RATE, PASSIVE
<b>MATL</b> SEE BOM	<b>FINISH</b> SEE NOTES	<b>CHECKED</b>	<b>DATE</b>		<b>PART NUMBER.</b> 320-10248-01
<b>SCALE</b> N/A	<b>UNIT</b> mm	<b>APPROVED</b>	<b>DATE</b>	<b>DRAWING NO.</b> 320-10248	<b>SIZE</b> A4
<b>SHEET</b> 2 OF 4				<b>REV.</b> X1	

1 PROPRIETARY INFORMATION  
2 COMPANY CONFIDENTIAL

6	7	8
REV.	ECN. NO.	DESCRIPTION
X1		INITIAL
		Jackyet
		12/03/2018

QSFP28 Passive Electrical Loopback Adapter

Product Descriptions

Our QSFP28 Passive Electrical Loopback is used for testing QSFP28 transceiver ports under board level tests. It's electrical loopback provides a cost effective low loss method for QSFP28 port testing.  
The loopback module is packaged in a standard MSA housing compatible with all QSFP28 ports. Transmit data from the host is electrically routed, then receive data outputs and 28 ports during R&D validation, production testing, and field testing.

Features

Operation up to 25.78125Gbps per lane  
Custom memory map by serial ID  
Built in diagnostic functions  
Hot-pluggable MSA compatible  
Fully SFF-8436, SFF-8635 and MSA compliant  
Temperature range from -40° to +80° C  
SONET/SDH, Ethernet, FC and IB Compliant  
MSA Compliant EEPROM coding by I2C (256 byte)

Benefits

Cost saving for QSFP28 Port Testing  
Memory Map Testing  
Board Level System Testing  
Power On Validation  
Excellent Signal Integrity with 0dB and 5dB option  
Replaces up to four channel QSFP28 transceivers


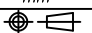
Applications

QSFP+ Port System testing  
Data Center & Networking testing  
Ethernet IEEE 802.3bj (Gigabit, 28 Gigabit Ethernet, FCoE)  
Infini-Band SDR, DDR, QDR, FDR and EDR backward compatible

Specifications

Backshell: Zinc Die-Casting Nickel plating  
PCB Paddle: M6, 38 POS  
PCB Contact Plating: Gold 30 u" min.  
Pull-Tab: Nylon (Polyamide) with blue color  
Pull-Tab cover: Stainless steel  
EMI Girdle: Stainless steel  
Rivet: Aluminum  
Durability: 500 cycles (EIA-364-23C)  
Mating & Unmating Force: 50N max. (EIA-364-13D)  
Latch Strength: 70N min. (EIA-364-13D)  
Supply Voltage: 3.13~5.25VDC (TYP. 3.3VDC)  
Withstanding Voltage: 300VDC  
Power Current Rating: 0.5 amps maximum per contact  
Insulation Resistance: 1,000Mohm min. (EIA-364-21C)  
Differential Impedance: 100ohm +/-10 @25ps rise time 20~80% (EIA-364-108)  
Within Pair SKEW: < 10ps (EIA-364-103)

RoHS Compliant

GENERAL TOLERANCE X.± 0.50 .X± 0.20 .XX± 0.10 .XXX± 0.05	ANGLE TOLERANCE X°± 5.0° .X°± 3.0° .XX°± 2.0° .XXX°± 1.0°	DRAWN Jackyet	DATE 12/03/18'		
MATL SEE BOM	FINISH SEE NOTES	CHECKED	DATE		TITLE QSFP28 COPPER LOOPBACK 100G DATA RATE, PASSIVE
SCALE N/A	UNIT mm	APPROVED	DATE	PART NUMBER 320-10248-01	
SHEET 3 OF 4				DRAWING NO. 320-10248	SIZE A4 REV. X1

2 EEPROM 烧录信息要求

3	4	5	6	7	8
REV.	ECN. NO.	DESCRIPTION	ENG	DATE	
X1		INITIAL	Jackyet	12/03/2018	

EEPROM	Parameter	Ref.
Data Address	Data code (HEX)	Value
0	11	
1	06	
2	06	
3~99	00	
100	00	
101	00	
102	00	
103	00	
104	00	
105	00	
106	00	
107	00	
108	00	
109	*	
110	38	
111	00	
112	00	
113	00	
114	00	
115	00	
116	00	
117	00	
118	00	
119	00	
120	00	
121	00	
122	00	
123	00	
124	00	
125	00	
126	00	
127	00	

EEPROM	Parameter	Ref.
Data Address	Data code (HEX)	Value
128	11	
129	00	
130	23	
131	88	
132	00	
133	00	
134	00	
135	00	
136	00	
137	80	
138	00	
139	00	
140	FF	25G
141	00	
142	00	
143	00	
144	00	
145	00	
146	00	0m
147	A0	
148	47	G
149	65	e
150	6E	n
151	65	e
152	73	s
153	69	i
154	73	s
155	20	
156	20	
157	20	
158	20	
159	20	

EEPROM	Parameter	Ref.
Data Address	Data code (HEX)	Value
160	20	
161	20	
162	20	
163	20	
164	1F	
165	00	
166	00	
167	00	
168	33	3
169	32	2
170	30	0
171	2D	-
172	31	1
173	30	0
174	32	2
175	34	4
176	38	8
177	2D	-
178	30	0
179	31	1
180	20	
181	20	
182	20	
183	20	
184	58	X
185	31	1
186	02	1L2.5
187	03	1L5.0
188	06	1L7.0
189	09	1L12.9
190	46	
191	00	check code


EEPROM	Parameter	Ref.
Data Address	Data code (HEX)	Value
192	0B	
193	00	
194	00	
195	00	
196	00	
197	20	
198	20	
199	20	
200	20	S/N
201	20	
202	20	
203	20	
204	20	
205	20	
206	20	
207	20	S/N
208	20	
209	20	
210	20	
211	20	
212	20	
213	20	
214	20	
215	20	
216	20	DATE
217	20	
218	20	
219	20	
220	00	
221	00	
222	67	
223	00	check code

EEPROM	Parameter	Ref.
Data Address	Data code (HEX)	Value
224	00	
225	00	
226	00	
227	00	
228	00	
229	00	
230	00	
231	00	
232	00	
233	00	
234	00	
235	00	
236	00	
237	00	
238	00	
239	00	
240	00	
241	00	
242	00	
243	00	
244	00	
245	00	
246	00	
247	00	
248	00	
249	00	
250	00	
251	00	
252	00	
253	00	
254	00	
255	00	

RoHS Compliant

NOTES:

1. Address 191 AND 223 IS CHECKSUM CODE THAT'S CALCULATED BY SYSTEM ;
2. Address 212~217 IS DATE CODE ;
3. Address 146 IS CABLE LENGTH: 00;
4. EEPROM PN IS PN: 320-10248-01

GENERAL TOLERANCE X.± 0.50 .X± 0.20 .XX± 0.10 .XXX± 0.05	ANGLE TOLERANCE X°± 5.0° .X°± 3.0° .XX°± 2.0° .XXX°± 1.0°	DRAWN Jackyet	DATE 12/03/18'	 <p><b>genesis</b> connected solutions</p>
MATERIAL SEE BOM		CHECKED	DATE	
FINISH SEE NOTES		APPROVED		PART NUMBER. 320-10248-01
SCALE N/A	UNIT mm	SHEET 4 OF 4		DRAWING NO. 320-10248
				SIZE A4
				REV. X1