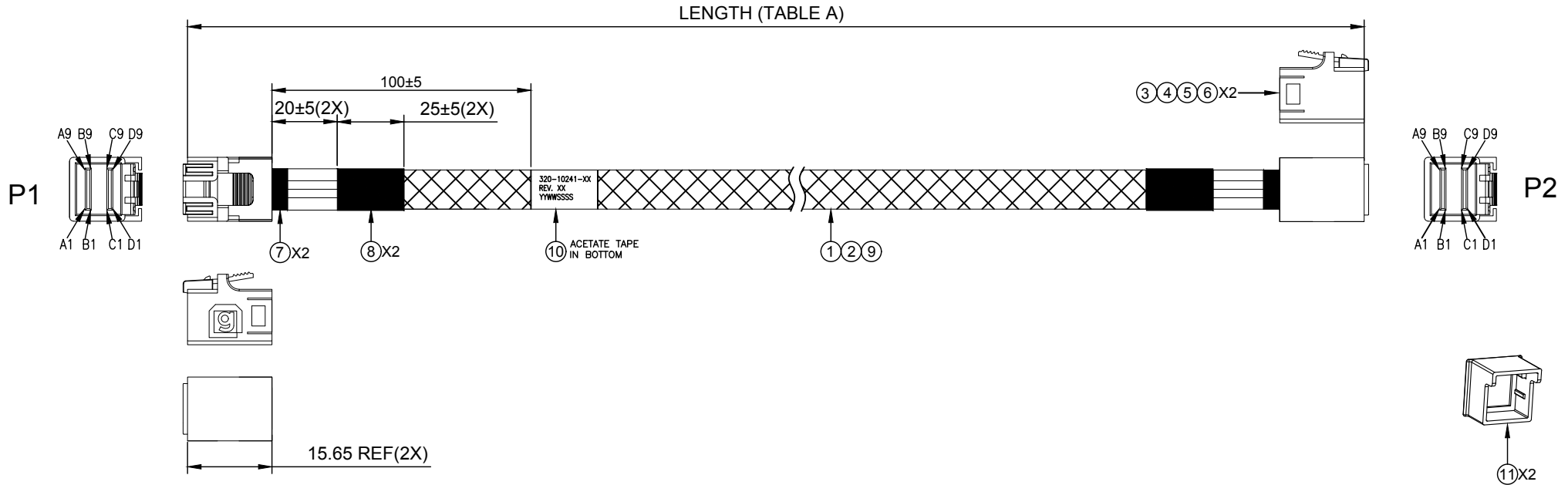


REV.	ECN. NO.	DESCRIPTION	ENG	DATE
X1		INITIAL	KYLE	11/19/2018



- TEST CONDITIONS:
- 100% OPEN & SHORT & MISS-WIRING & INTERMITTENCE TEST.
 - CONDUCTIVE RESISTANCE: 3Ω MAX.
 - INSULATION RESISTANCE: 10 MΩ
 - HI-POT TEST: 300VDC FOR 10ms.
 - THIS PRODUCT MEETS SAS 3.0

11	HD SAS INT. DUST COVER, PE	2
10	LABEL FOR SFF-8643, 60*30MM(REF)	1
9	PLASTIC BRAID SLEEVE, Ø8.0MM, PET, BLACK	A/R
8	ACETATE TAPE, 25MM, BLACK	A/R
7	ACETATE TAPE, 10MM, BLACK	A/R
6	HOUSING FOR SFF-8643, PC-940, BLACK,W/G LOGO	2
5	INNER MOLDING FOR SFF-8643, BLACK	2
4	PCB FOR INT. MINI SAS HD,ISOLA 370HR, AU30u", C&D SIDE	2
3	PCB FOR INT. MINI SAS HD,ISOLA 370HR, AU30u", A&B SIDE	2
2	FLAT CABLE, 30AWG, PVC	A/R
1	SAS CABLE 30AWG, FOIL COLOR SILVER	A/R
S/N	DESCRIPTION	Q'TY

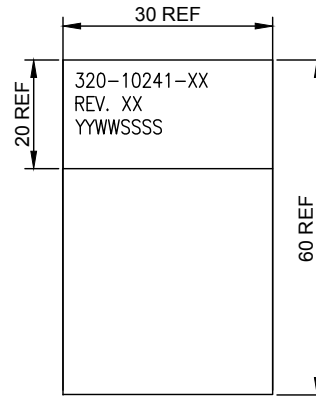
GENERAL TOLERANCE X± 0.50 .X± 0.20 .XX± 0.10 .XXX± 0.05	ANGLE TOLERANCE X°± 5.0° .X°± 3.0° .XX°± 2.0° .XXX°± 1.0°	DRAWN KYLE	DATE 2018.11.19	
MATL SEE BOM	FINISH SEE NOTES	CHECKED	DATE	
SCALE N/A	UNIT mm	APPROVED	DATE	PART NUMBER 320-10241-01
SHEET 1 OF 2				DRAWING NO. 320-10241
				SIZE A4
				REV. X1

REV.	ECN. NO.	DESCRIPTION	ENG	DATE
		SEE SHEET 1		

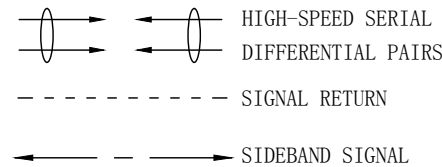
WIRING TABLE

P1		P2	
GND	D9	B9	GND
TX2-	D8	B8	RX2-
TX2+	D7	B7	RX2+
GND	D6	B6	GND
TX0-	D5	B5	RX0-
TX0+	D4	B4	RX0+
GND	D3	B3	GND
SIDEBAND6	D2	D1	SIDEBAND6
SIDEBAND5	D1	D2	SIDEBAND5
SIDEBAND4	C1	C2	SIDEBAND4
SIDEBAND2	C2	C1	SIDEBAND2
GND	C3	A3	GND
TX1+	C4	A4	RX1+
TX1-	C5	A5	RX1-
GND	C6	A6	GND
TX3+	C7	A7	RX3+
TX3-	C8	A8	RX3-
GND	C9	A9	GND
GND	B9	D9	GND
RX2-	B8	D8	TX2-
RX2+	B7	D7	TX2+
GND	B6	D6	GND
RX0-	B5	D5	TX0-
RX0+	B4	D4	TX0+
GND	B3	D3	GND
SIDEBAND1	B2	B1	SIDEBAND1
SIDEBAND3	B1	B2	SIDEBAND3
SIDEBAND7	A1	A2	SIDEBAND7
SIDEBAND0	A2	A1	SIDEBAND0
GND	A3	C3	GND
RX1+	A4	C4	TX1+
RX1-	A5	C5	TX1-
GND	A6	C6	GND
RX3+	A7	C7	TX3+
RX3-	A8	C8	TX3-
GND	A9	C9	GND

LABEL INFORMATION



FONT: ARIAL
HEIGHT: 2.0mm Min
LINE SPACING: 1.0MM
YY: YEAR
WW: WEEK
SSSS: EXCLUSIVELY SERIAL NO OF PRODUCTION



PART NUMBER	AWG	LENGTH mm
320-10241-01	30	150±10
320-10241-02	30	300±10
320-10241-03	30	500±15
320-10241-04	30	700±15
320-10241-05	30	1000±20

GENERAL TOLERANCE X ± 0.50 .X ± 0.20 .XX ± 0.10 .XXX ± 0.05	ANGLE TOLERANCE X° ± 5.0° .X° ± 3.0° .XX° ± 2.0° .XXX° ± 1.0°	DRAWN KYLE	DATE 2018.11.19		
MATERIAL: SEE BOM		CHECKED	DATE		TITLE: INTERNAL MINI SAS HD 4i STR TO HD 4i STR, 100 OHM, 12G
FINISH: SEE NOTES		APPROVED		DATE	PART NUMBER: 320-10241-01
SCALE: N/A	UNIT: mm	SHEET 2 OF 2		DRAWING NO. 320-10241	SIZE: A4 REV: X1