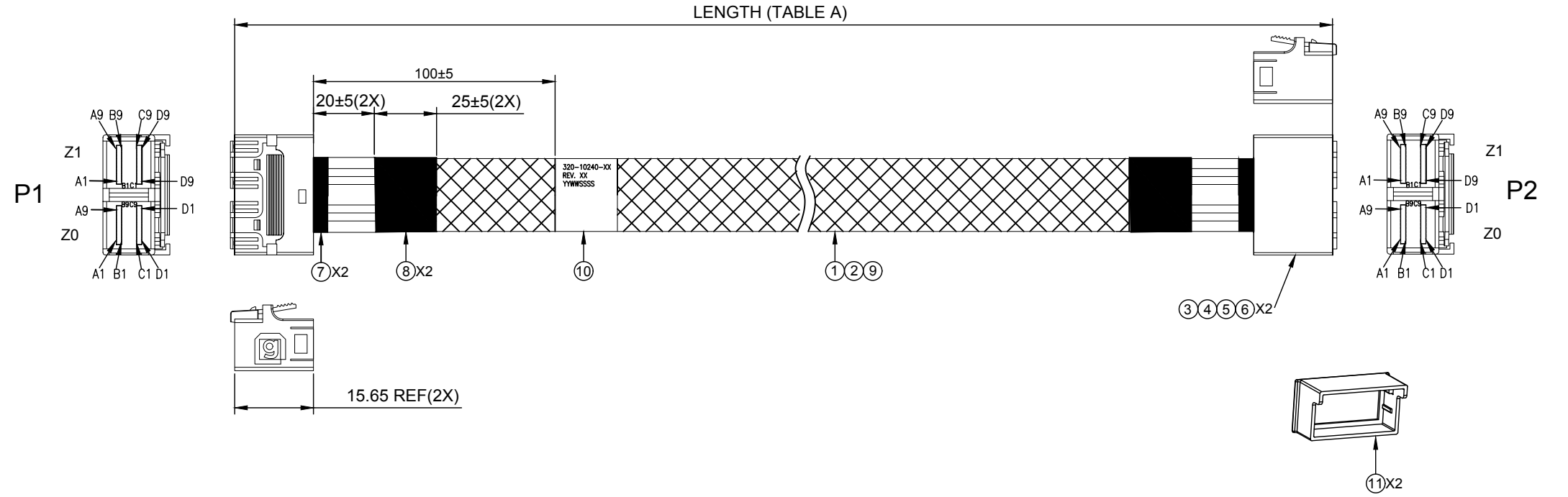


REV.	ECN. NO.	DESCRIPTION	ENG	DATE
X1		INITIAL	KYLE	11/19/2018



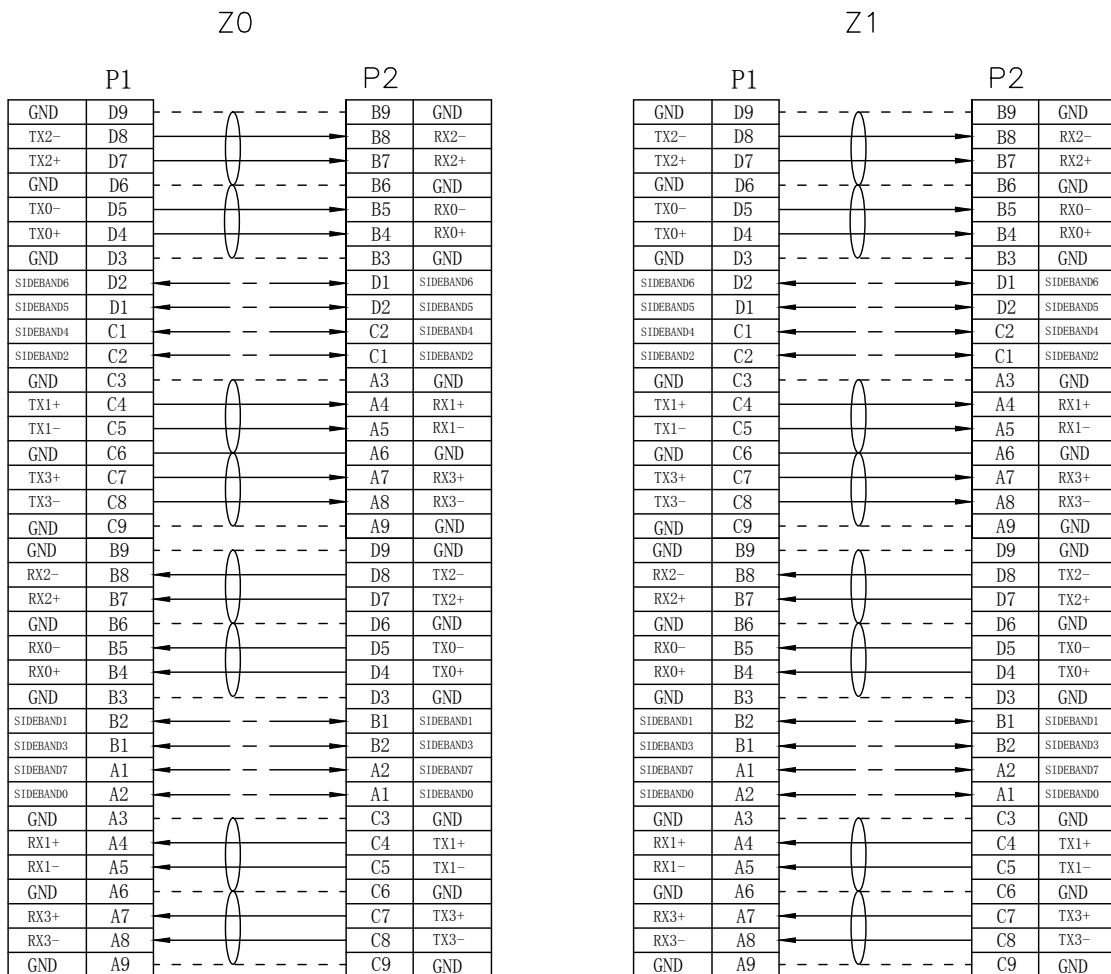
TEST CONDITIONS:

1. 100% OPEN & SHORT & MISS-WIRING & INTERMITTENCE TEST.
2. CONDUCTIVE RESISTANCE: 3Ω MAX.
3. INSULATION RESISTANCE: 10 MΩ
4. HI-POT TEST: 300VDC FOR 10ms.
5. THIS PRODUCT MEETS SAS 3.0

11	HD SAS INT. DUST COVER, PE	2
10	LABEL FOR SFF-8643, 60*30MM(REF)	1
9	PLASTIC BRAID SLEEVE, Ø10.0MM, PET, BLACK	A/R
8	ACETATE TAPE, 25MM, BLACK	A/R
7	ACETATE TAPE, 10MM, BLACK	A/R
6	HOUSING FOR SFF-8643, PC-940, BLACK,W/G LOGO	2
5	INNER MOLDING FOR SFF-8643, BLACK	2
4	PCB FOR INT. MINI SAS HD,ISOLA 370HR, AU30u", C&D SIDE	4
3	PCB FOR INT. MINI SAS HD,ISOLA 370HR, AU30u", A&B SIDE	4
2	FLAT CABLE, 30AWG, PVC	A/R
1	SAS CABLE 30AWG, FOIL COLOR SILVER	A/R
S/N	DESCRIPTION	Q'TY

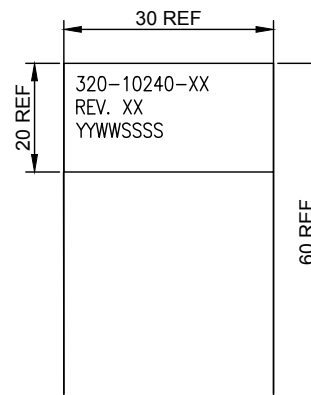
GENERAL TOLERANCE X± 0.50 .X± 0.20 .XX± 0.10 .XXX± 0.05	ANGLE TOLERANCE X°± 5.0° .X°± 3.0° .XX°± 2.0° .XXX°± 1.0°	DRAWN KYLE	DATE 2018.11.19		
MATL SEE BOM	FINISH SEE NOTES	CHECKED	DATE		TITLE INTERNAL MINI SAS HD 8i STR TO HD 8i STR CABLE ASSEMBLY, 100 OHM, 12G
SCALE N/A	UNIT mm	APPROVED	DATE	PART NUMBER 320-10240-01	
SHEET 1 OF 2				DRAWING NO. 320-10240	SIZE A4 REV. X1

WIRING TABLE

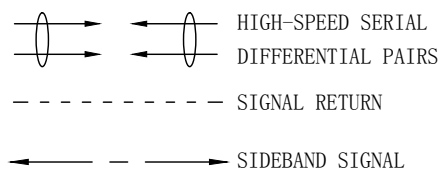


PART NUMBER	AWG	LENGTH mm
320-10240-01	30	150±10
320-10240-02	30	300±10
320-10240-03	30	500±15
320-10240-04	30	700±15
320-10240-05	30	1000±20

LABEL INFORMATION



FONT: ARIAL  
HEIGHT: 2.0mm Min  
LINESPACING: 1.0MM  
YY: YEAR  
WW: WEEK  
SSSS: EXCLUSIVELY SERIAL NO OF PRODUCTION



GENERAL TOLERANCE X ± 0.50 .X ± 0.20 .XX ± 0.10 .XXX ± 0.05	ANGLE TOLERANCE X° ± 5.0° .X° ± 3.0° .XX° ± 2.0° .XXX° ± 1.0°	DRAWN KYLE	DATE 2018.11.19		
MATL SEE BOM		CHECKED	DATE		TITLE INTERNAL MINI SAS HD 8i STR TO HD 8i STR CABLE ASSEMBLY, 100 OHM, 12G
FINISH SEE NOTES		APPROVED		DATE	PART NUMBER 320-10240-01
SCALE N/A	UNIT mm	SHEET 2 OF 2		DRAWING NO. 320-10240	SIZE A4 REV. X1