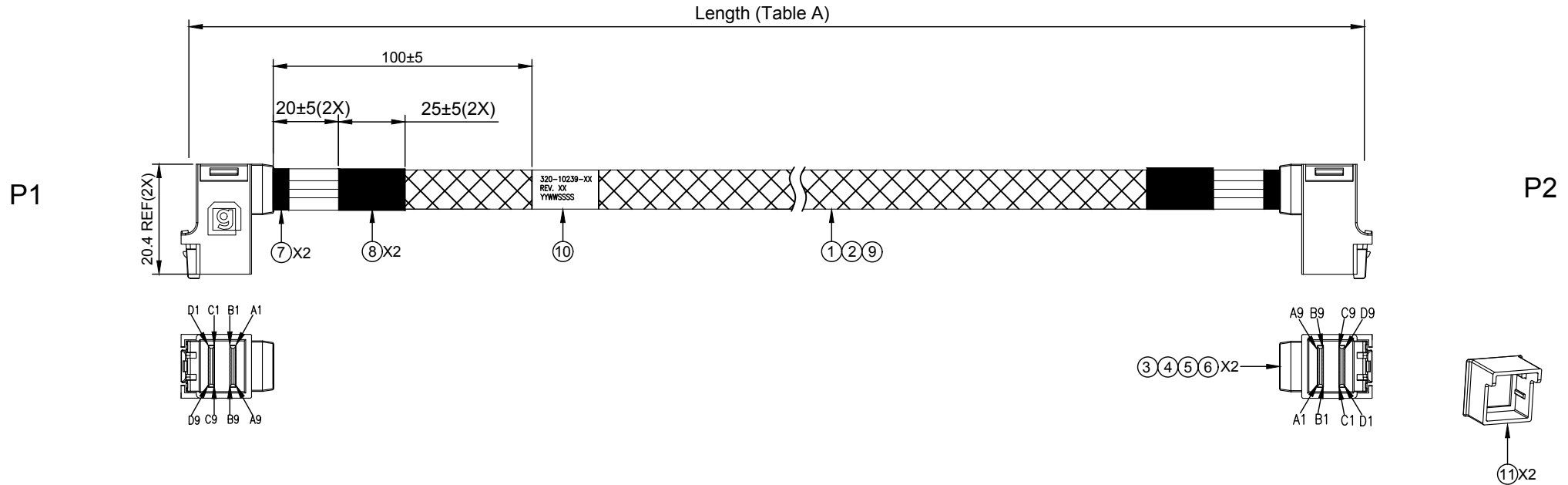


PROPRIETARY INFORMATION  
COMPANY CONFIDENTIAL

RoHS Compliant

REV.	ECN. NO.	DESCRIPTION	ENG	DATE
X1		INITIAL	KYLE	11/15/2018
X2		Correct P/N	KYLE	11/30/2018



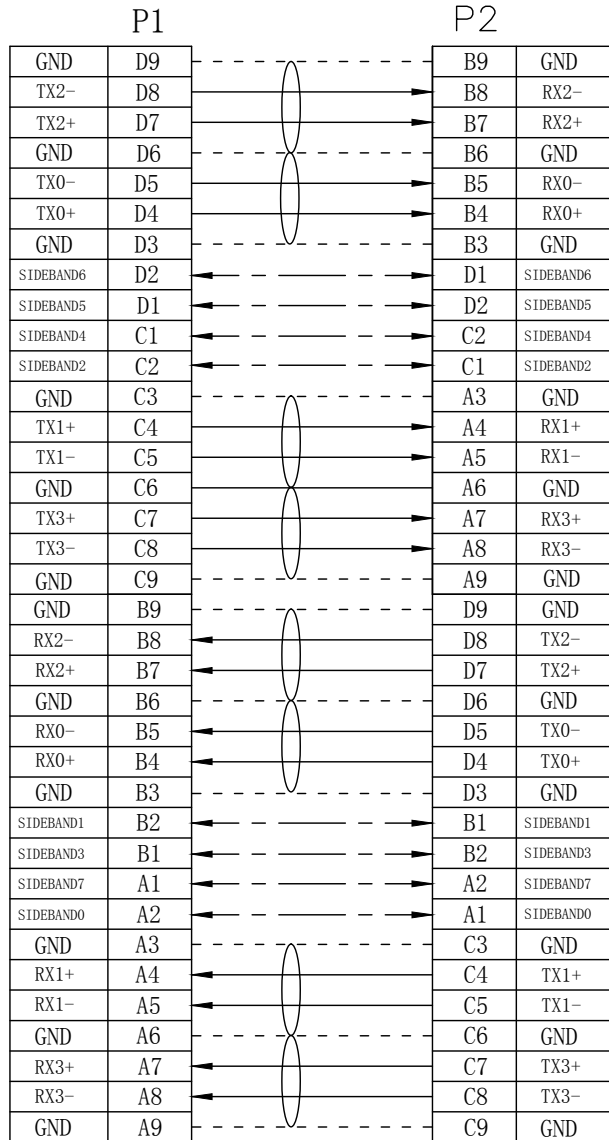
TEST CONDITIONS:

- 100% OPEN & SHORT & MISS-WIRING & INTERMITTENCE TEST.
- CONDUCTIVE RESISTANCE: 3Ω MAX.
- INSULATION RESISTANCE: 10 MΩ
- HI-POT TEST: 300VDC FOR 10ms.
- THIS PRODUCT MEETS SAS 3.0

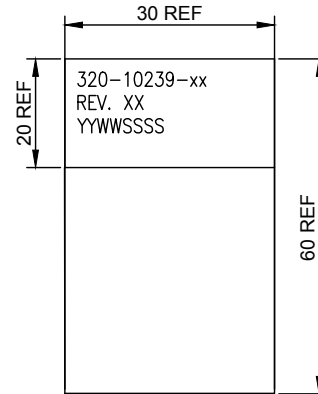
11	HD SAS INT. DUST COVER, PE	2
10	LABEL FOR SFF-8643, 60*30MM(REF)	1
9	PLASTIC BRAID SLEEVE, Ø8.0MM, PET, BLACK	A/R
8	ACETATE TAPE, 25MM, BLACK	A/R
7	ACETATE TAPE, 10MM, BLACK	A/R
6	HOUSING FOR SFF-8643, PC-940, BLACK,W/G LOGO	2
5	INNER MOLDING FOR SFF-8643, BLACK	2
4	PCB FOR INT. MINI SAS HD,ISOLA 370HR, AU30u", C&D SIDE	2
3	PCB FOR INT. MINI SAS HD,ISOLA 370HR, AU30u", A&B SIDE	2
2	FLAT CABLE, 30AWG, PVC	A/R
1	SAS CABLE 30AWG, FOIL COLOR SILVER	A/R
S/N	DESCRIPTION	Q'TY

GENERAL TOLERANCE X± 0.50 .X± 0.20 .XX± 0.10 .XXX± 0.05	ANGLE TOLERANCE X°± 5.0° .X°± 3.0° .XX°± 2.0° .XXX°± 1.0°	DRAWN KYLE	DATE 2018.11.30		
MATERIAL SEE BOM		CHECKED	DATE		TITLE. INTERNAL MINI SAS HD 4i R/A TO HD 4i R/A , 12G
FINISH SEE NOTES		APPROVED		DATE	PART NUMBER. 320-10239-01
SCALE N/A	UNIT mm			DRAWING NO. 320-10239	SIZE A4 REV. X2
SHEET 1 OF 2					

WIRING TABLE



LABEL INFORMATION



FONT: ARIAL  
HEIGHT: 2.0mm Min  
LINE SPACING: 1.0MM  
YY: YEAR  
WW: WEEK  
SSSS: EXCLUSIVELY SERIAL NO OF PRODUCTION

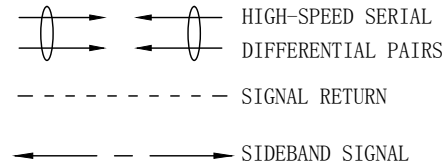


TABLE A

PART NUMBER	AWG	LENGTH mm
320-10239-01	30	150±10
320-10239-02	30	300±10
320-10239-03	30	500±15
320-10239-04	30	700±15
320-10239-05	30	1000±20

GENERAL TOLERANCE X ± 0.50 .X ± 0.20 .XX ± 0.10 .XXX ± 0.05	ANGLE TOLERANCE X° ± 5.0° .X° ± 3.0° .XX° ± 2.0° .XXX° ± 1.0°	DRAWN KYLE	DATE 2018.11.30		
MATERIAL SEE BOM		CHECKED	DATE		TITLE INTERNAL MINI SAS HD 4i R/A TO HD 4i R/A, 12G
FINISH SEE NOTES		APPROVED		DATE	PART NUMBER 320-10239-01
SCALE N/A	UNIT mm	SHEET 2 OF 2			DRAWING NO. 320-10239
					SIZE A4