

PROPRIETARY INFORMATION
COMPANY CONFIDENTIAL

| REV. | ECN. NO. | DESCRIPTION | ENG | DATE |
|------|----------|-----------------------|------|------------|
| X1 | | ISSUED | AXL | 11/6/2018 |
| X2 | | UPDATE LENGTH OPTIONS | KYLE | 11/15/2018 |
| X3 | | UPDATE WIRE DIAGRAM | KYLE | 4/15/2019 |

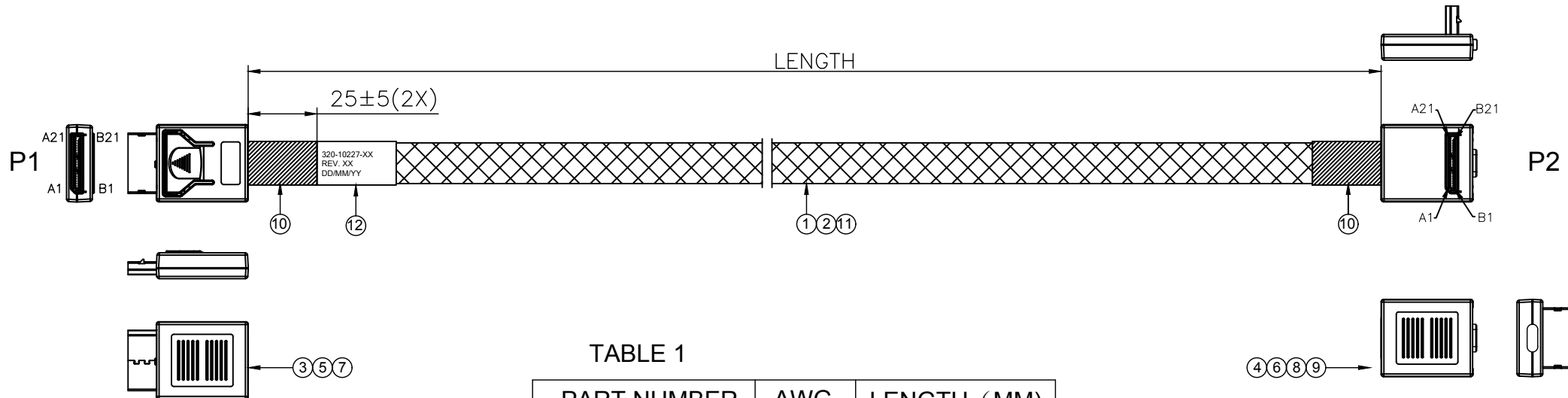


TABLE 1

| PART NUMBER | AWG | LENGTH (MM) |
|--------------|-----|-------------|
| 320-10228-01 | 34 | 500±15 |
| 320-10228-02 | 34 | 1000±20 |
| 320-10228-03 | 32 | 500±15 |
| 320-10228-04 | 32 | 1000±20 |

| ITEM | NAME | Q'TY | DESCRIPTION | NOTE |
|------|--------------|------|---|------|
| 12 | LABEL | 1 | WHITE LABEL, 60*30MM(REF) | |
| 11 | WEAVE | A/R | PLASTIC BRAID SLEEVE, PET, BLACK,OD:8.0MM | |
| 10 | ACETATE TAPE | A/R | ACETATE TAPE, W=25MM, BLACK | |
| 9 | PUSH BUTTON | 1 | OCULINK 4i R/A PUSH BUTTON PC+ABS,30%G.F, BLACK | |
| 8 | COVER | 1 | OCULINK 4i R/A COVER SET PC+ABS,30%G.F, BLACK | |
| 7 | COVER | 1 | OCULINK 4i STRAIGHT COVER SET PC+ABS,30%G.F, BLACK | |
| 6 | INNER MOLD | 1 | INNER MOLDING FOR OCULINK 4i R/A, BLACK | |
| 5 | INNER MOLD | 1 | INNER MOLDING FOR OCULINK 4i STR, BLACK | |
| 4 | PCBA | 1 | PCBA-OCULINK 4i CONN. R/A & OCULINK 4i PCB,FR-408HR, AU30u" | |
| 3 | PCBA | 1 | PCBA-OCULINK 4i CONN. & OCULINK 4i PCB,FR-408HR, AU30u" | |
| 2 | WIRE | A/R | ELECTRONIC WIRE, COLOR | |
| 1 | SAS CABLE | A/R | SAS4.0 CABLE: UL20744, BLUE, 85ohm | |

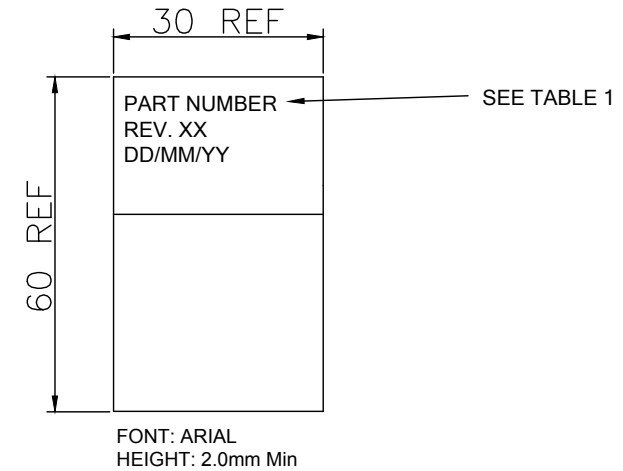
RoHS Compliant

| | | | | |
|--|---|--------------|--------------------|-----------------------------|
| GENERAL TOLERANCE X ± .X ± 0.40 .XX ± 0.30 .XXX ± 0.20 | ANGLE TOLERANCE X° ± 5.0° .X° ± 3.0° .XX° ± 2.0° .XXX° ± 1.0° | DRAWN AXL | DATE 11/06/2018 | |
| MATERIAL FINISH | | CHECKED | DATE | |
| SCALE N/A | UNIT mm | APPROVED | DATE | PART NUMBER 320-10228-XX |
| SHEET 1 OF 2 | | | | DRAWING NO. 320-10228 |
| | | | | SIZE A4 REV. X3 |

WIRING TABLE

| P1 | | P2 | |
|----------|-----|----------|-----|
| RESERVED | A1 | RESERVED | B1 |
| GND | A2 | GND | B2 |
| Rx0+ | A3 | Tx0+ | B3 |
| Rx0- | A4 | Tx0- | B4 |
| GND | A5 | GND | B5 |
| Rx1+ | A6 | Tx1+ | B6 |
| Rx1- | A7 | Tx1- | B7 |
| GND | A8 | GND | B8 |
| BP TYPE | A9 | BP TYPE | B9 |
| CWAKE# | A10 | CWAKE# | B10 |
| GND | A11 | GND | B11 |
| VSP | A12 | VSP | B12 |
| VSP | A13 | VSP | B13 |
| GND | A14 | GND | B14 |
| Rx2+ | A15 | Tx2+ | B15 |
| Rx2- | A16 | Tx2- | B16 |
| GND | A17 | GND | B17 |
| Rx3+ | A18 | Tx3+ | B18 |
| Rx3- | A19 | Tx3- | B19 |
| GND | A20 | GND | B20 |
| RESERVED | A21 | RESERVED | B21 |
| RESERVED | B1 | RESERVED | A1 |
| GND | B2 | GND | A2 |
| Tx0+ | B3 | Rx0+ | A3 |
| Tx0- | B4 | Rx0- | A4 |
| GND | B5 | GND | A5 |
| Tx1+ | B6 | Rx1+ | A6 |
| Tx1- | B7 | Rx1- | A7 |
| GND | B8 | GND | A8 |
| CLOCK | B9 | CLOCK | A9 |
| DATA | B10 | DATA | A10 |
| GND | B11 | GND | A11 |
| PERST# | B12 | PERST# | A12 |
| CPRSNT# | B13 | CPRSNT# | A13 |
| GND | B14 | GND | A14 |
| Tx2+ | B15 | Rx2+ | A15 |
| Tx2- | B16 | Rx2- | A16 |
| GND | B17 | GND | A17 |
| Tx3+ | B18 | Rx3+ | A18 |
| Tx3- | B19 | Rx3- | A19 |
| GND | B20 | GND | A20 |
| RESERVED | B21 | RESERVED | A21 |

LABEL INFORMATION



TEST CONDITIONS:

- 100% OPEN & SHORT & MISS-WIRING & INTERMITTENCE TEST.
- CONDUCTIVE RESISTANCE: 3Ω MAX.
- INSULATION RESISTANCE: 10 MΩ
- HI-POT TEST: 300VDC FOR 10ms.
- THIS PRODUCT MEETS SAS 4.0

RoHS Compliant

| | | | | | |
|--|---|--------------|--------------------|------------|---|
| GENERAL TOLERANCE X ± .X ± 0.40 .XX ± 0.30 .XXX ± 0.20 | ANGLE TOLERANCE X° ± 5.0° .X° ± 3.0° .XX° ± 2.0° .XXX° ± 1.0° | DRAWN AXL | DATE 11/06/2018 | | TITLE Oculink 4i STRAIGHT TO R/A CABLE ASS'Y |
| FINISH | | CHECKED | DATE | | PART NUMBER 320-10228-XX |
| SCALE N/A | UNIT mm | APPROVED | | DATE | DRAWING NO. 320-10228 |
| SHEET 2 OF 2 | | | | SIZE A4 | REV. X3 |