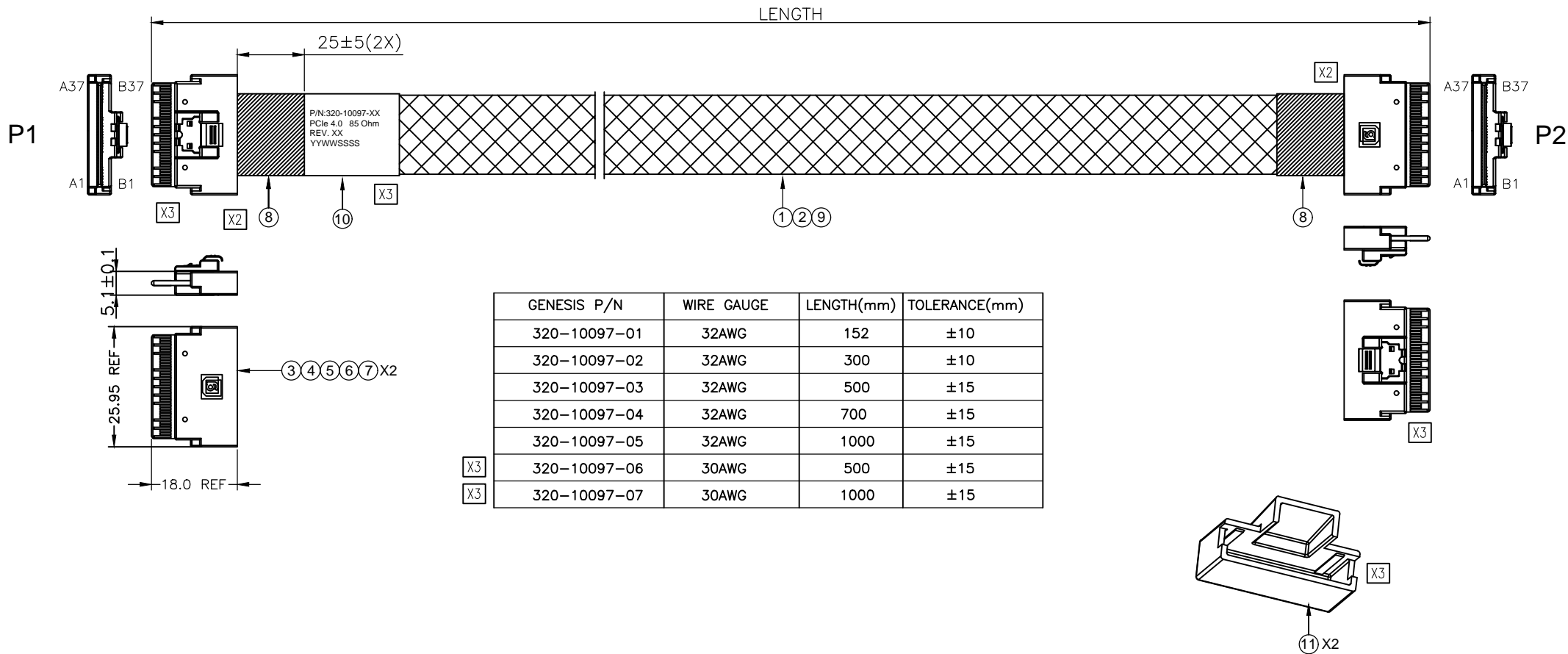


PROPRIETARY INFORMATION
COMPANY CONFIDENTIAL

| REV. | ECN. NO. | DESCRIPTION | ENG | DATE |
|------|----------|---|------|------------|
| X1 | | ISSUED | KYLE | 6/11/2018 |
| X2 | | CHANGE HOUSING, UPDATE LENGTHS | KYLE | 10/18/2018 |
| X3 | | ADD 30AWG OPTION AND UPDATE ILLUSTRATION CORRECT TITLE AND LABEL | AXL | 5/20/2020 |

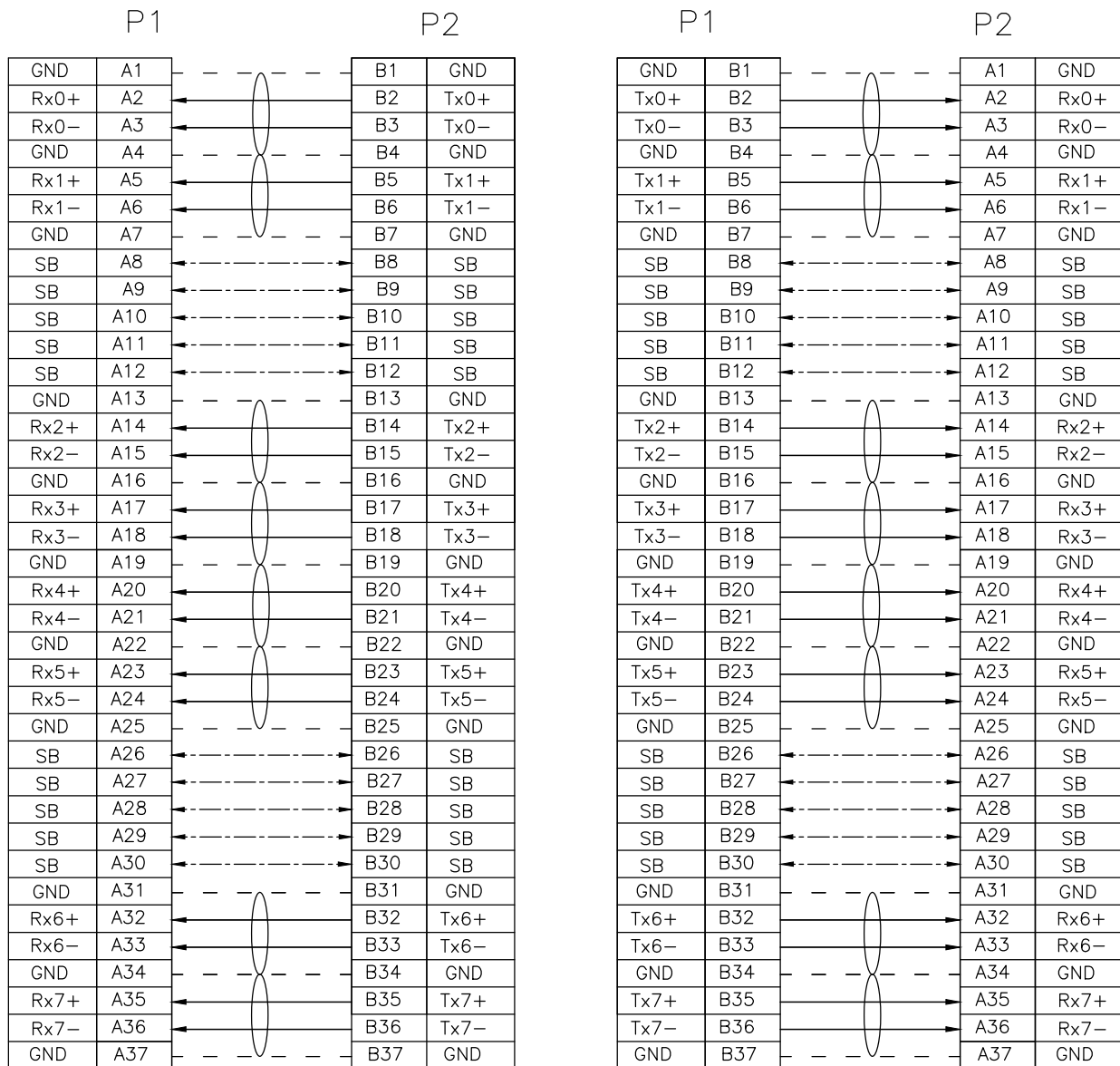


| ITEM | NAME | QTY | DESCRIPTION | NOTE |
|------|--------------|-----|--|------|
| 11 | DUST CAP | 2 | DUST CAP FOR SFF-8654 8i, PE, NATURAL | |
| 10 | LABEL | 1 | WHITE LABEL, 60*30MM(REF) | |
| 9 | WEAVE | A/R | PLASTIC BRAID SLEEVE, PET, BLACK,OD:10.0MM | |
| 8 | ACETATE TAPE | A/R | ACETATE TAPE, W=25MM, BLACK | |
| 7 | RIVET | 4 | RIVET FOR SFF-8654 | |
| 6 | LATCH | 2 | LATCH FOR SFF-8654 | |
| 5 | HOUSING | 2 | HOUSING FOR SFF-8654 8i STR, BLACK | |
| 4 | INNER MOLD | 2 | INNER MOLDING FOR SFF-8654 8i STR, BLACK | |
| 3 | 8654 8i PCB | 2 | PCB FOR SLIMLINE SAS 8i STR, AU30u" | |
| 2 | FLAT CABLE | A/R | FLAT CABLE 32AWG*5C. | |
| 1 | TWINAX CABLE | A/R | PCIe4.0 CABLE 25G | |

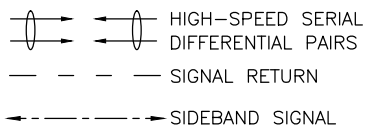
RoHS Compliant

| | | | | |
|--|---|-----------------------------|--------------------|---|
| GENERAL TOLERANCE X ± .X ± 0.40 .XX ± 0.30 .XXX ± 0.20 | ANGLE TOLERANCE X° ± 5.0° .X° ± 3.0° .XX° ± 2.0° .XXX° ± 1.0° | DRAWN KYLE 10/18/2018 | DATE 10/18/2018 | genesis connected solutions |
| MATERIAL SEE BOM | | CHECKED | DATE | |
| FINISH SEE BOM | | APPROVED | | PART NUMBER 320-10097-XX |
| SCALE N/A | UNIT mm | DATE | | DRAWING NO. 320-10097 |
| SHEET 1 OF 2 | | | | SIZE A4 REV. X3 |

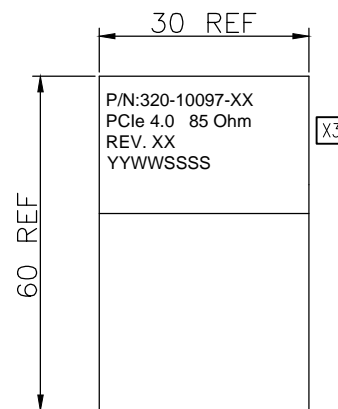
WIRING TABLE



A1,A4,A7,A13,A16,A19,A22,A25,A31,A34,A37,
B1,B4,B7,B13,B16,B19,B22,B25,B31,B34,B37 Grounded on PCB



LABEL INFORMATION



FONT: ARIAL
HEIGHT: 2.0mm Min

TEST CONDITIONS:

- 100% OPEN & SHORT & MISS-WIRING & INTERMITTENCE TEST.
- CONDUCTIVE RESISTANCE: 3Ω MAX.
- INSULATION RESISTANCE: 10 MΩ
- HI-POT TEST: 300VDC FOR 10ms.
- THIS PRODUCT MEETS PCIe 4.0

RoHS Compliant

| | | | | |
|--|---|-----------------------------|------|-----------------------------|
| GENERAL TOLERANCE X ± .X ± 0.40 .XX ± 0.30 .XXX ± 0.20 | ANGLE TOLERANCE X° ± 5.0° .X° ± 3.0° .XX° ± 2.0° .XXX° ± 1.0° | DRAWN KYLE 10/18/2018 | DATE | |
| MATL SEE BOM | FINISH SEE BOM | CHECKED | DATE | |
| SCALE N/A | UNIT mm | APPROVED | DATE | PART NUMBER 320-10097-XX |
| SHEET 2 OF 2 | | | | DRAWING NO. 320-10097 |
| | | | | SIZE A4 |
| | | | | REV. X3 |