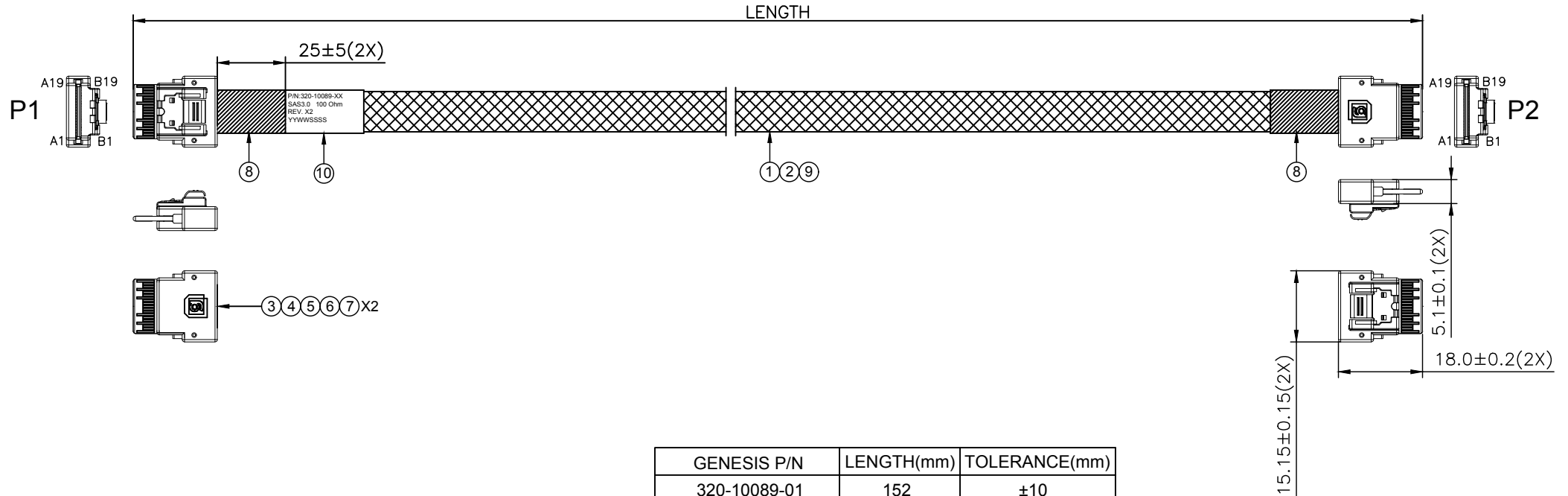


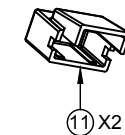
PROPRIETARY INFORMATION
COMPANY CONFIDENTIAL

REV.	ECN. NO.	DESCRIPTION	ENG	DATE
X1		ISSUED	KYLE	6/8/2018
X2		UPDATE LENGTH OPTIONS	KYLE	10/23/2018



GENESIS P/N	LENGTH(mm)	TOLERANCE(mm)
320-10089-01	152	±10
320-10089-02	300	±10
320-10089-03	700	±15
320-10089-04	1000	±15

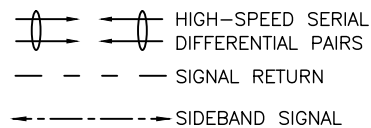
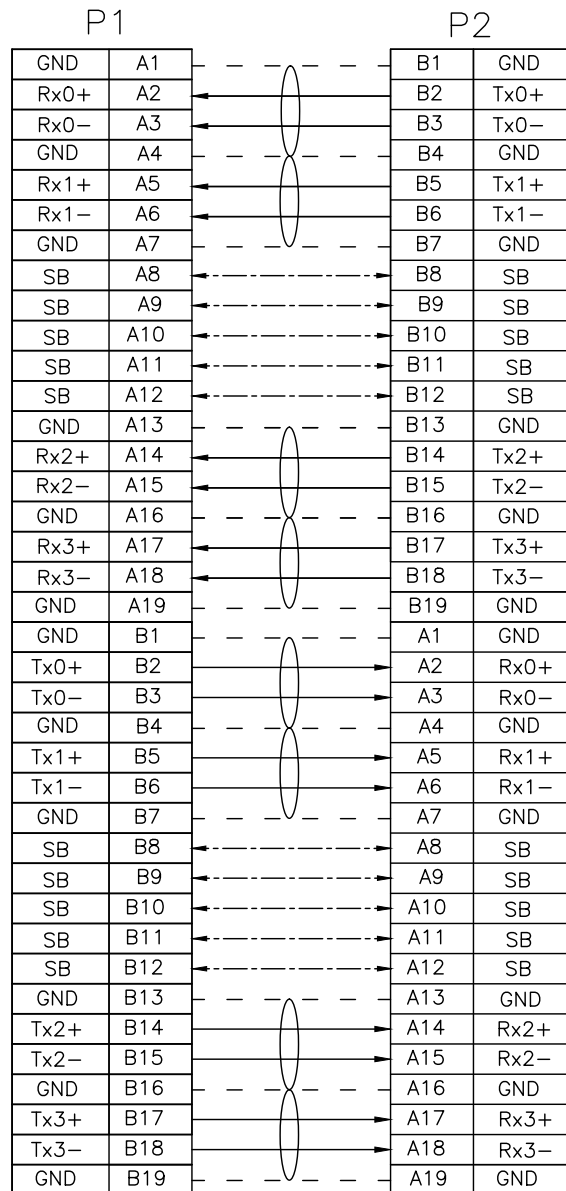
ITEM	NAME	QTY	DESCRIPTION	NOTE
11	DUST CAP	2	DUST CAP FOR SFF-8654 4i, PE, NATURAL	
10	LABEL	1	WHITE LABEL, 60*30MM(REF)	
9	WEAVE	A/R	PLASTIC BRAID SLEEVE, PET, BLACK,OD:8.0MM	
8	ACETATE TAPE	A/R	ACETATE TAPE, W=25MM, BLACK	
7	RIVET	4	RIVET FOR SFF-8654	
6	LATCH	2	LATCH FOR SFF-8654	
5	HOUSING	2	HOUSING FOR SFF-8654 4i STR, BLACK	
4	INNER MOLD	2	INNER MOLDING FOR SFF-8654 4i STR, BLACK	
3	8654 4i PCB	2	PCB FOR SLIMLINE SAS 4i STR, AU30u"	
2	FLAT CABLE	A/R	FLAT CABLE 32AWG*5C, RED/BLACK	
1	SAS CABLE	A/R	SAS3.0 CABLE 12G 32AWG	



RoHS Compliant

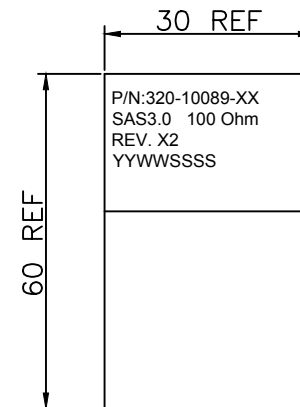
GENERAL TOLERANCE X ± .X ± 0.40 .XX ± 0.30 .XXX ± 0.20	ANGLE TOLERANCE X° ± 5.0° .X° ± 3.0° .XX° ± 2.0° .XXX° ± 1.0°	DRAWN KYLE	DATE 10/23/2018		TITLE SlimSAS 4i STR Cable Ass'y SAS3.0 100 Ohm
MATL SEE BOM	FINISH SEE BOM	CHECKED	DATE		PART NUMBER 320-10089-XX
SCALE N/A	UNIT mm	APPROVED	DATE	DRAWING NO. 320-10089	SIZE A4
SHEET 1 OF 2					REV. X2

WIRING TABLE



P1 & P2: A1,A4,A7,A13,A16,A19,B1,B4,B7,B13,B16,B19 Grounded on PCB

LABEL INFORMATION



FONT: ARIAL
HEIGHT: 2.0mm Min

TEST CONDITIONS:

1. 100% OPEN & SHORT & MISS-WIRING & INTERMITTENCE TEST.
2. CONDUCTIVE RESISTANCE: 3Ω MAX.
3. INSULATION RESISTANCE: 10 MΩ
4. HI-POT TEST: 300VDC FOR 10ms.
5. THIS PRODUCT MEETS SAS 3.0

RoHS Compliant

GENERAL TOLERANCE X ± .X ± 0.40 .XX ± 0.30 .XXX ± 0.20		ANGLE TOLERANCE X° ± 5.0° .X° ± 3.0° .XX° ± 2.0° .XXX° ± 1.0°		DRAWN KYLE		DATE 10/23/2018			
MATL SEE BOM		FINISH SEE BOM		CHECKED		DATE			
SCALE N/A		UNIT mm		APPROVED		DATE		PART NUMBER 320-10089-XX	
SHEET 2 OF 2								DRAWING NO. 320-10089	
								SIZE A4 REV. X2	