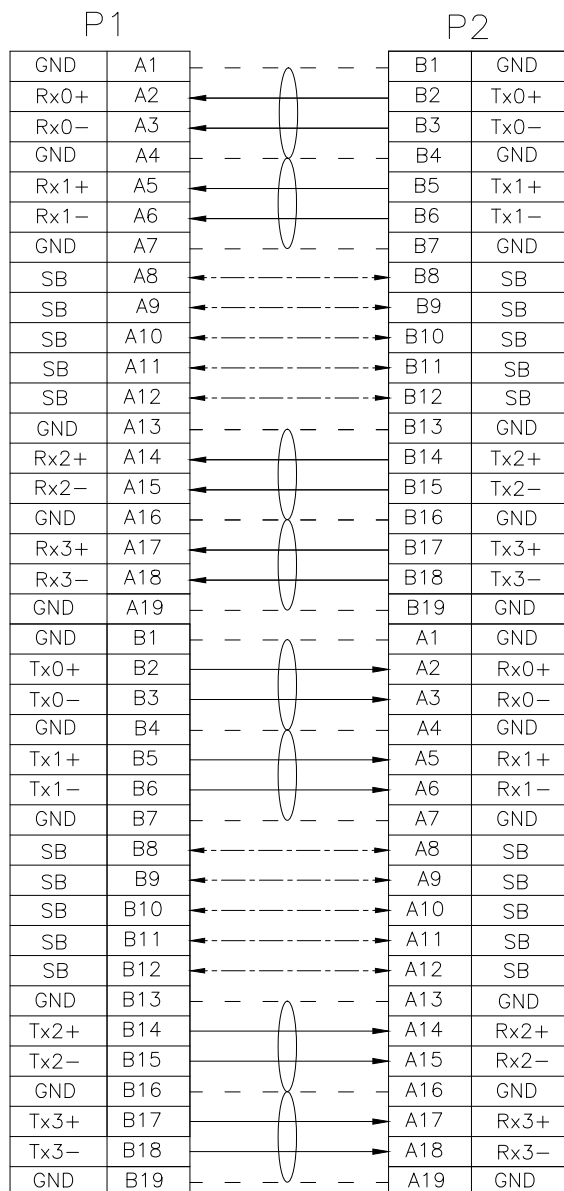


ITEM	NAME	Q'TY	DESCRIPTION	NOTE
11	DUST CAP	2	DUST CAP FOR SFF-8654 4i, PE, NATURAL	
10	LABEL	1	WHITE LABEL, 60*30MM(REF)	
9	WEAVE	A/R	PLASTIC BRAID SLEEVE, PET, BLACK,OD:8.0MM	
8	ACETATE TAPE	A/R	ACETATE TAPE, W=25MM, BLACK	
7	RIVET	4	RIVET FOR SFF-8654	
6	LATCH	2	LATCH FOR SFF-8654	
5	HOUSING	2	HOUSING FOR SFF-8654 4i STR, BLACK	
4	INNER MOLD	2	INNER MOLDING FOR SFF-8654 4i STR, BLACK	
3	8654 4i PCB	2	PCB FOR SLIMLINE SAS 4i STR, AU30u"	
2	FLAT CABLE	A/R	FLAT CABLE 32AWG*5C, RED/BLACK	
1	SAS CABLE	A/R	SAS4.0 CABLE: UL20744 (32AWG*2C+2D)+AM, BLUE, 100 Ohm	

RoHS Compliant

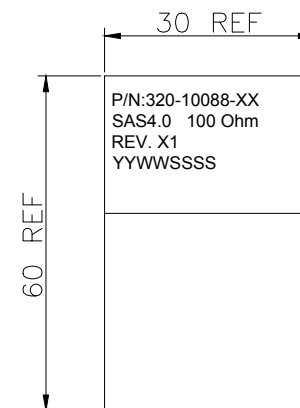
GENERAL TOLERANCE X ± .X ± 0.40 .XX ± 0.30 .XXX ± 0.20	ANGLE TOLERANCE X° ± 5.0° .X° ± 3.0° .XX° ± 2.0° .XXX° ± 1.0°	DRAWN KYLE	DATE 6/11/2018	
MATL SEE BOM	FINISH SEE BOM	CHECKED	DATE	
SCALE N/A	UNIT mm	APPROVED	DATE	TITLE: SlimSAS 4i STR Cable Ass'Y SAS4.0 100 Ohm PART NUMBER: 320-10088-XX DRAWING NO. 320-10088
SHEET 1 OF 2				SIZE A4 REV. X1

WIRING TABLE



P1 & P2: A1,A4,A7,A13,A16,A19,B1,B4,B7,B13,B16,B19 Grounded on PCB

LABEL INFORMATION



FONT: ARIAL
HEIGHT: 2.0mm Min

TEST CONDITIONS:

- 100% OPEN & SHORT & MISS-WIRING & INTERMITTENCE TEST.
- CONDUCTIVE RESISTANCE: 3Ω MAX.
- INSULATION RESISTANCE: 10 MΩ
- HI-POT TEST: 300VDC FOR 10ms.
- THIS PRODUCT MEETS SAS 4.0

RoHS Compliant

GENERAL TOLERANCE X ± .X ± 0.40 .XX ± 0.30 .XXX ± 0.20	ANGLE TOLERANCE X° ± 5.0° .X° ± 3.0° .XX° ± 2.0° .XXX° ± 1.0°	DRAWN KYLE	DATE 6/11/2018		TITLE SlimSAS 4i STR Cable Ass'Y SAS4.0 100 Ohm
MATL SEE BOM	FINISH SEE BOM	CHECKED	DATE		PART NUMBER 320-10088-XX
SCALE N/A	UNIT mm	APPROVED	DATE	DRAWING NO. 320-10088	SIZE A4 REV. X1
SHEET 2 OF 2					