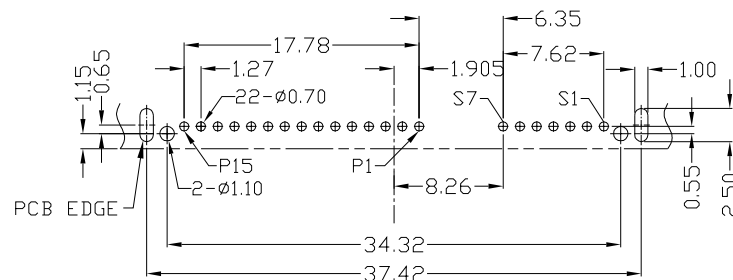
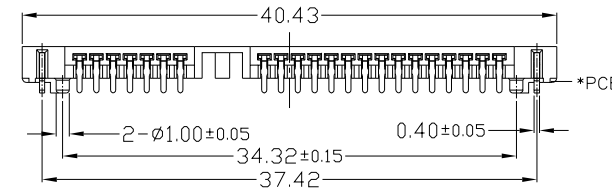
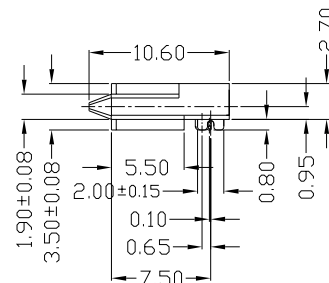
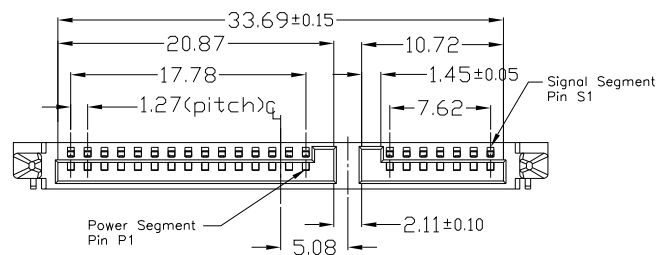
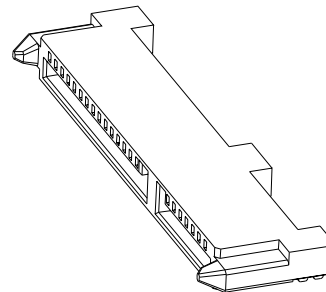
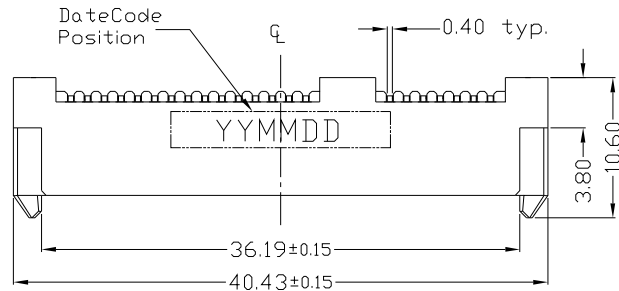


PROPRIETARY INFORMATION  
COMPANY CONFIDENTIAL

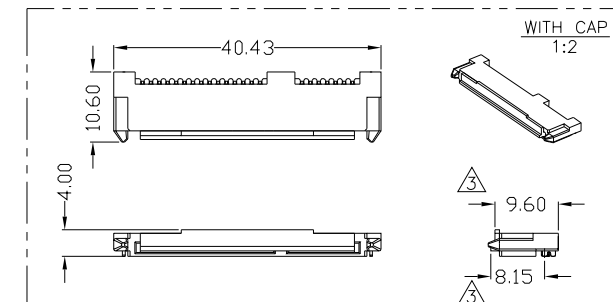
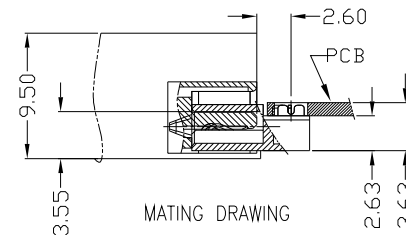
REV.	ECN. NO.	DESCRIPTION	ENG	DATE
X1		INITIAL	Dan	10/29/15

NOTES:

- MATERIAL AND PLATING:**  
Housing(CAP): LCP+30%GF,UL94V-0,Black  
Contact: Phosphor Bronze, Au And Sn Plated.  
Fork: Brass, Matte-Sn Plated.
- MECHANICAL CHARACTERISTIC**  
Mating Force: 20N(2.05Kgf) max.  
Unmating Force: 4N(0.41Kgf) min.  
Durability: 500 Cycles.
- ELECTRICAL CHARACTERISTIC**  
Current Rating: 1.5A.  
Voltage Rating: 30V AC.  
Contact Resistance: 30m Ohm Max.  
Insulation Resistance: 1000M Ohm Min  
Dielectric Withstanding Voltage: 500V AC Min
- TEMPERATURE**  
Operating Temperature: -40°C~+85°C  
Storage Temperature: -60°C~+105°C



RECOMMENDED PCB LAYOUT (TOP VIEW)  
GENERAL TOLERANCES:±0.03 (t=1.0)



ITEM	NAME	Q'TY	DESCRIPTION
3	Fork	1	Brass, Nickel 50u" Min Under plating overall, Matte Tin 80u" Min Plating overall
2	Contact	1	PHOSPHOR BRONZE, Nickel 50u" Min Under plating Over all, Matte Tin 80u" Min Plating On tail Area;Au gold flash Plating on contact area
1	Housing/Cap	1	LCP+30%GF,UL94 V-0, BLACK

GENERAL TOLERANCE X.± 0.50 .X± 0.38 .XX± 0.25 .XXX± 0.15	ANGLE TOLERANCE X'± 5.0° .X'± 3.0° .XX'± 2.0° .XXX'± 1.0°	DRAWN Dan	DATE 10/29/15'	 TITLE: Serial ATA Rece. (7+15)pin 90° DIP Type Center Height 0.95mm PART NUMBER: 240-10005-01
MATL SEE BOM	FINISH SEE NOTES	CHECKED	DATE	
SCALE N/A	UNIT mm	APPROVED River	DATE 10/29/15'	SIZE A4 REV. X1
SHEET 1 OF 1				