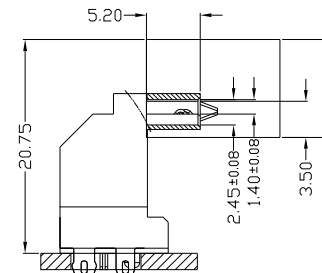
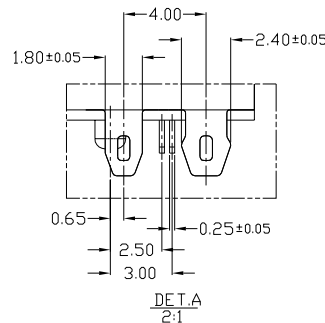
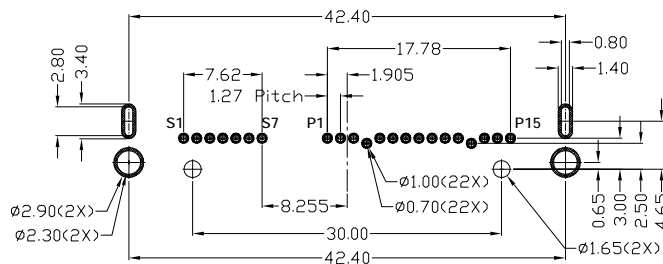
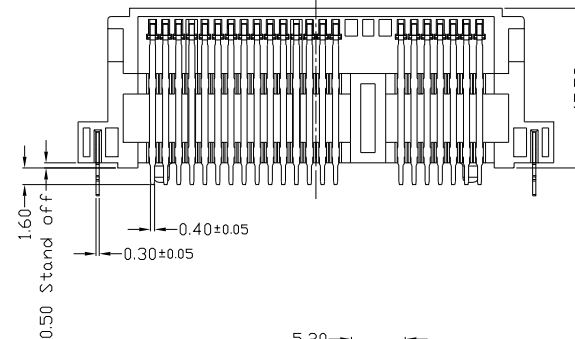
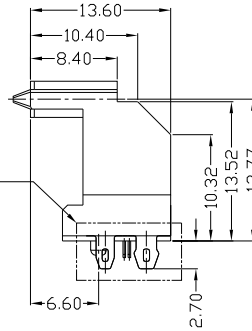
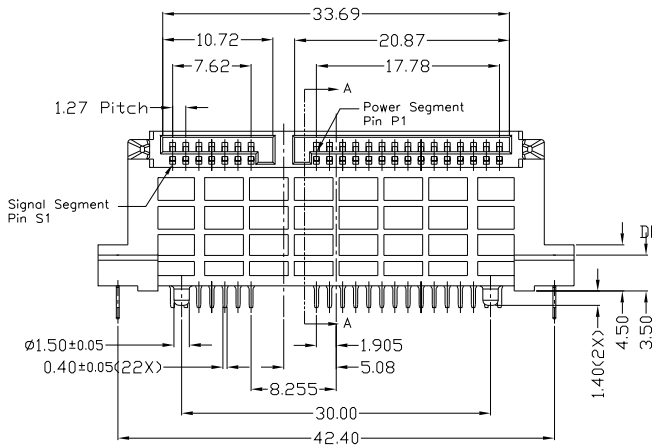
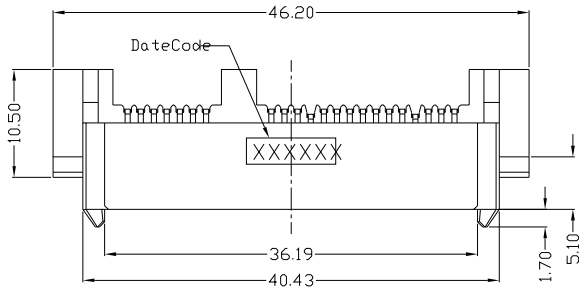
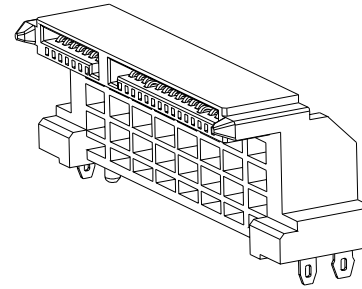


PROPRIETARY INFORMATION
COMPANY CONFIDENTIAL

REV.	ECN. NO.	DESCRIPTION	ENG	DATE
X1		INITIAL	Don	10/29/15

NOTES:

- MATERIAL AND PLATING:**
Housing: LCP+30%GF,UL94V-0,Black
Contact: Phosphor Bronze, Au And Sn Plated.
Fork: Brass, Sn Plated.
- MECHANICAL CHARACTERISTIC**
Mating Force: 20N(2.05Kgf) max.
Unmating Force: 4N(0.41Kgf) min.
Durability: 500 Cycles.
- ELECTRICAL CHARACTERISTIC**
Current Rating: 1.5A.
Voltage Rating: 30V AC.
Contact Resistance: 30m Ohm Max.
Insulation Resistance: 1000M Ohm Min
Dielectric Withstanding Voltage: 500V AC Min
- TEMPERATURE**
Openrating Temperature: -40°C~+85°C
Storage Temperature: -60°C~+105°C



MATING DRAWING

RECOMMENDED PCB LAYOUT (TOP VIEW)
GENERAL TOLERANCES: ±0.05 (t=1.6)

3	Fork	1	Brass, Nickel 50u" Min Under plating overall, Matte Tin 80u" Min Plating overall
2	Contact	1	PHOSPHOR BRONZE, Nickel 50u" Min Under plating Over all, Matte Tin 80u" Min Plating On tail Area;Au gold flash Plating on contact area
1	Housing/Cap	1	LCP+30%GF,UL94 V-0, BLACK
ITEM	NAME	Q'TY	DESCRIPTION

GENERAL TOLERANCE X.± 0.50 .X± 0.38 .XX± 0.25 .XXX± 0.15	ANGLE TOLERANCE X'± 5.0° .X'± 3.0° .XX'± 2.0° .XXX'± 1.0°	DRAWN Don	DATE 10/29/15'	<p>TITLE: Serial ATA (7+15)pin DIP PRODUCT Center Height 13.77mm</p>	
MATL SEE BOM	FINISH SEE NOTES	CHECKED	DATE		PART NUMBER: 240-10003-01
SCALE N/A	UNIT mm	APPROVED River	DATE 10/29/15'	DRAWING NO. 240-10003	SIZE A4 REV. X1
SHEET 1 OF 1					