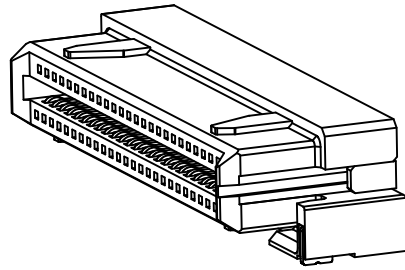
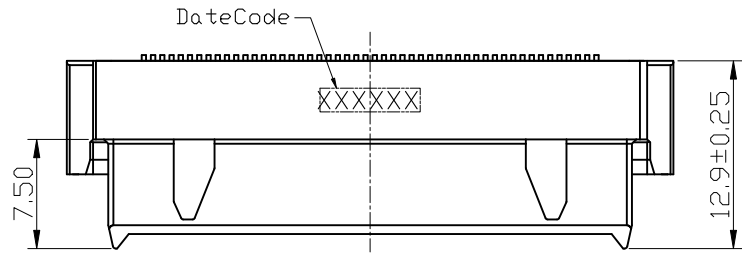


PROPRIETARY INFORMATION
COMPANY CONFIDENTIAL

REV.	ECN. NO.	DESCRIPTION	ENG	DATE
A		INITIAL	Sun	12/17/2015

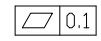
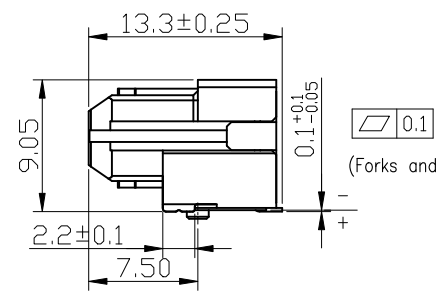
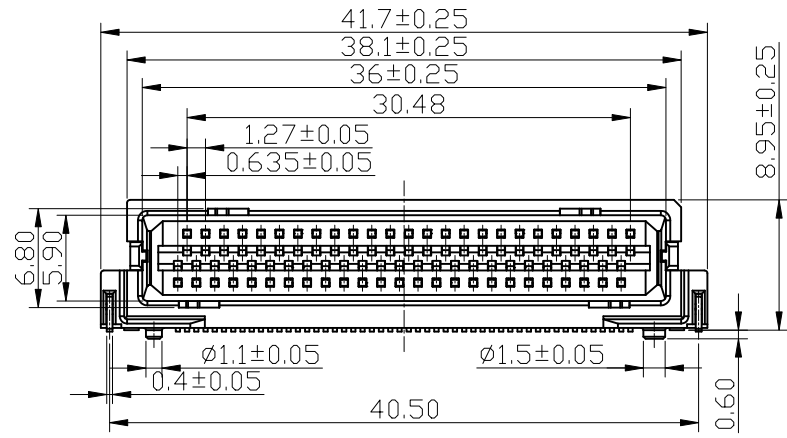


NOTES
MECHANICAL CHARACTERISTIC
1.MATING FORCE: 7Kg Max
2.UNMATING FORCE: 0.6Kg Min
3.DURABILITY:300 CYCLES

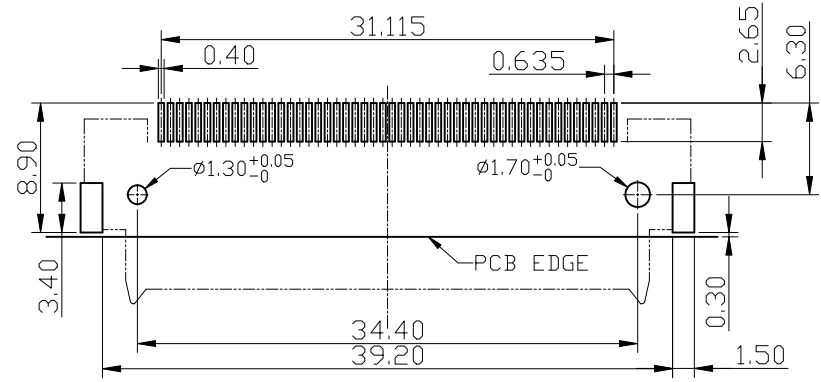
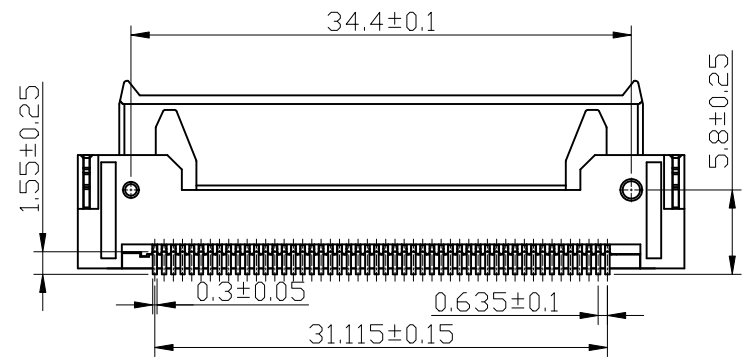
ELECTRICAL CHARACTERISTIC
4.CONTACT RESISTANCE: 30 MILIOHMS MAX
5.INSULATION RESISTANCE: 1000 MOHM MIN
6.WITHSTANDING VOLATAGE: 100V AC MIN

TEMPERATURE
7.OPENRATING TEMPERATURE:-25°~+85°C
8.STORAGE TEMPERATURE: -40°C~+105°C

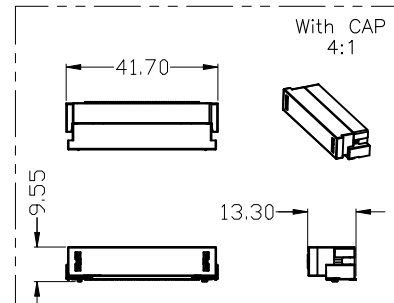
DATE CODE:YYMMDD(Y:YEAR M:MONTH D:DATE)



(Forks and all contacts)



RECOMMENDED PCB LAYOUT (TOP VIEW)
GENERAL TOLERANCES:±0.03 (t=1.6)



ITEM	NAME	Q'TY	DESCRIPTION	NOTE
4	CAP	1	LCP+30%GF,COLOR BLACK	UL94-V0
3	FORK	2	BRASS,MATT-TIN 100u" PLATED ALL OVER NICKEL 50u" MIN UNDERPLATING OVERALL	
2	TERMINAL	50	PHOSPHOR BRONZE,PLATING GOLD FLASH PLATING ON CONTACT AREA, 100u" MATT-TIN PLATED ON SOLDER TAILS,NICKEL 50u" MINI UNDERPLATING OVERALL	
1	HOUSING	1	LCP+30%GF,COLOR BLACK	UL94-V0

GENERAL TOLERANCE .X±0.50 .X±0.38 .XX±0.25 .XXX±0.15	ANGLE TOLERANCE X°± 5.0° X°± 3.0° .XX°± 2.0° .XXX°± 1.0°
MATL SEE BOM	FINISH SEE NOTES
SCALE N/A	UNIT mm
SHEET 1 OF 2	

DRAWN Sun	DATE 12/17/15'
CHECKED	DATE
APPROVED River	DATE 12/17/15'

TITLE:Board to Board 50Pin PLUG 90° SMT TYPE H=9.0mm,	
PART NUMBER: 110-10006-01	
DRAWING NO. 110-10006	SIZE A4 REV. A