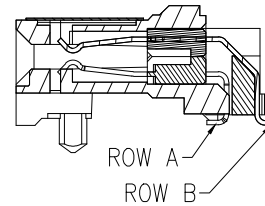
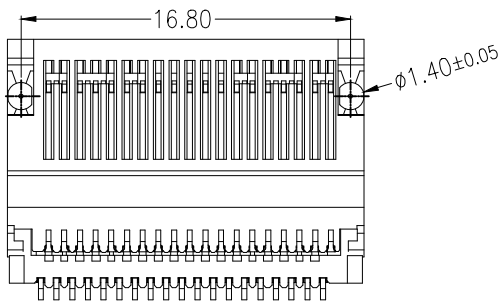
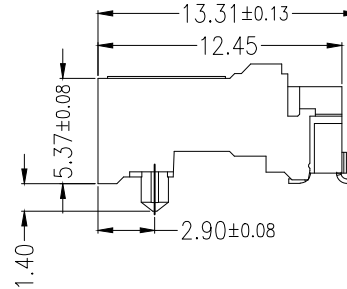
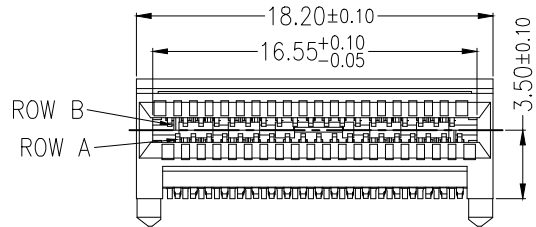
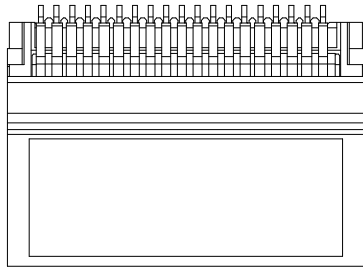
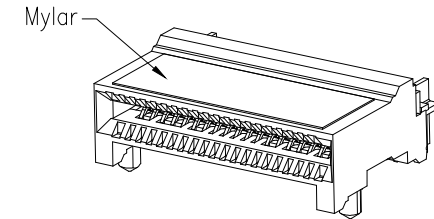


PROPRIETARY INFORMATION
COMPANY CONFIDENTIAL

REV/	ECN. NO.	DESCRIPTION	ENG	DATE
A		INITIAL	JUAN	06/11/18'



- NOTE:
MECHANICAL REQUIREMENT:
1. DURABILITY: 200 CYCLES MIN.
2. INSERTION FORCE WITH CAGE: 9N MAX
EXTRACTION FORCE WITH CAGE:1N MIN
ENVIRONMENTAL:
1. CONTACT RESISTANCE: 30 MILLIOHMS MAX INITIAL.
2. DIELECTRIC WITHSTANDING VOLTAGE: 300V AC/MIN.
3. OPERATION: -40°C~+65°C.
4. STORAGE: -20°C~+85°C.
5. REFLOW SOLDERING TEMPERATURE:260° MAXIMUM FOR 10 SECONDS.
6. ROHS COMPLIANT



ITEM	NAME	Q'TY	DESCRIPTION	NOTE
2	TERMINAL	38	C5210 CONTACT AREA AU30U"Min.SOLDER AREA MATTE TIN 100U". NI 50U"OVER ALL	
1	HOUSING	1	LCP, BLACK	UL94V-0

GENERAL TOLERANCE		ANGLE TOLERANCE:	
X.	±0.38	X°	±0.5°
.X	±0.30	.X°	±0.5°
.XX	±0.20	.XX°	±0.5°
.XXX	±0.10		

DRAWN	DATE
Juan	06/11/18'
CHECKED	DATE
APPROVED	DATE
Hill	06/11/18'

		TITLE:	HIGH SPEED INTERFACE 28G 1N CONNECTOR 38PIN
		PART NUMBER:	107-10071-01
DRAWING NO.	107-10071	SIZE	A4
		REV.	A

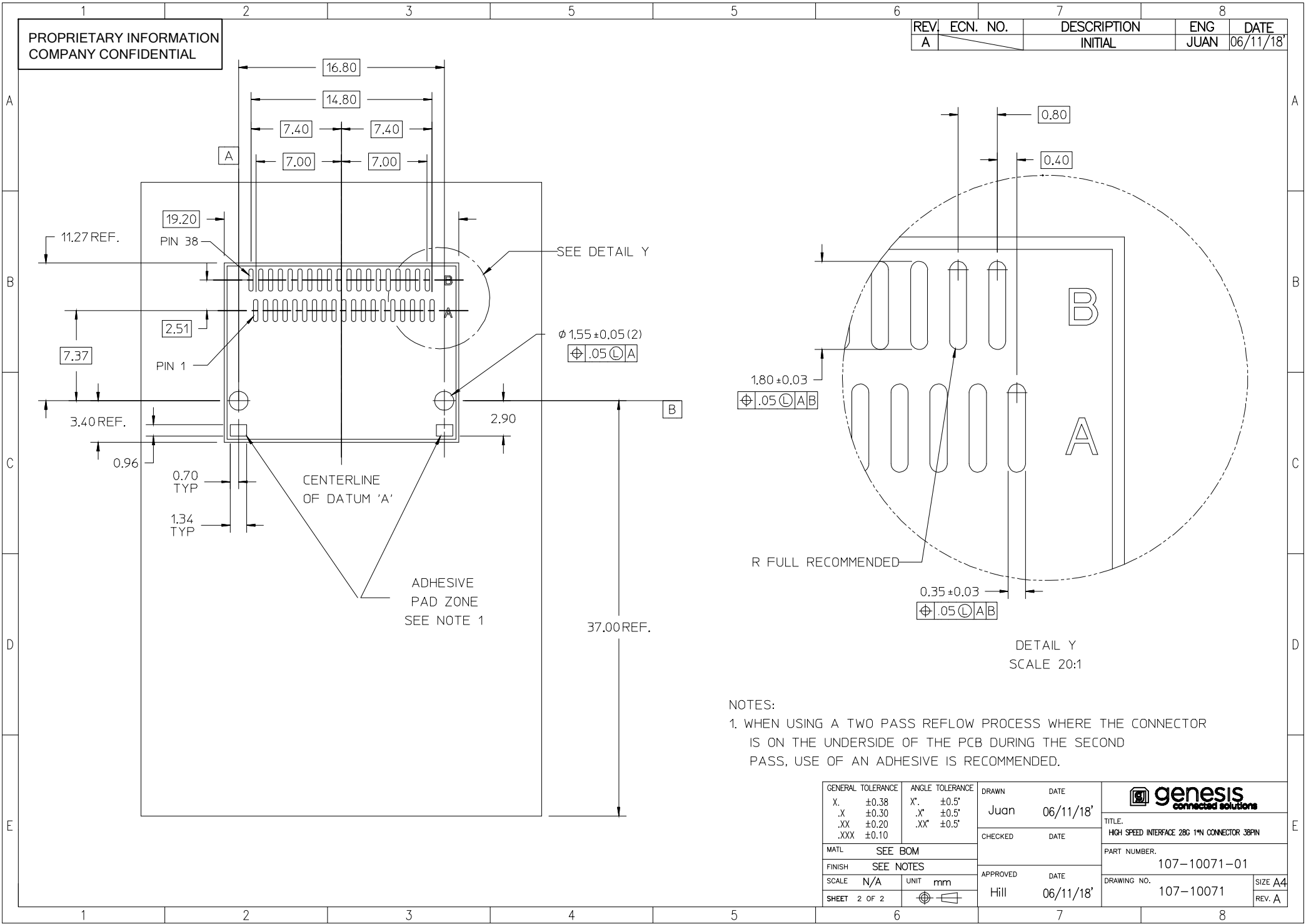
A
B
C
D
E

A
B
C
D
E

1 2 3 5 5 6 7 8

PROPRIETARY INFORMATION
COMPANY CONFIDENTIAL

REV.	ECN. NO.	DESCRIPTION	ENG	DATE
A		INITIAL	JUAN	06/11/18'



NOTES:
1. WHEN USING A TWO PASS REFLOW PROCESS WHERE THE CONNECTOR IS ON THE UNDERSIDE OF THE PCB DURING THE SECOND PASS, USE OF AN ADHESIVE IS RECOMMENDED.

GENERAL TOLERANCE .X ±0.38 .XX ±0.30 .XXX ±0.20 ±0.10	ANGLE TOLERANCE X° ±0.5° .X° ±0.5° .XX° ±0.5°	DRAWN Juan	DATE 06/11/18'	
MATERIAL SEE BOM		CHECKED	DATE	
FINISH SEE NOTES		APPROVED Hill		DATE 06/11/18'
SCALE N/A	UNIT mm	SHEET 2 OF 2		PART NUMBER 107-10071-01
				DRAWING NO. 107-10071
				SIZE A4
				REV. A