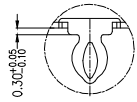
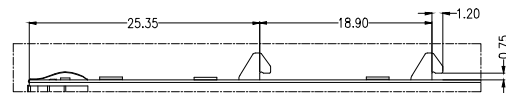


PROPRIETARY INFORMATION
COMPANY CONFIDENTIAL

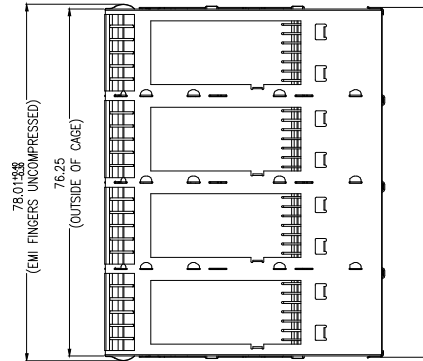
REV	ECN. NO.	DESCRIPTION	ENG	DATE
A		INITIAL	ANDY	02/06/18



DETAIL: A
SCALE: 5:1

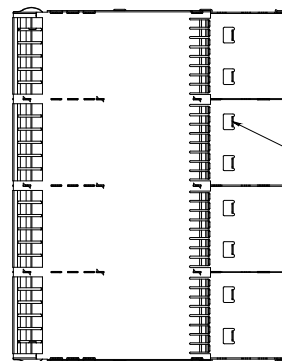
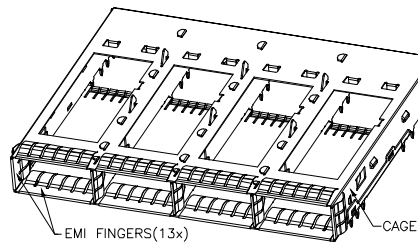
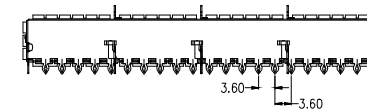
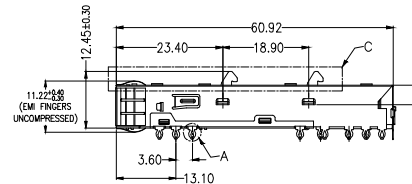
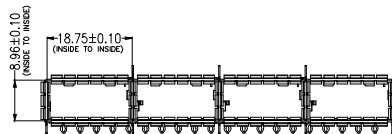


DETAIL: C
SCALE: 2:1

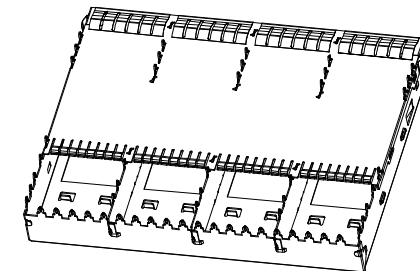


NOTE:

- | 1, | DESCRIPTION | Q'ty | MATERIAL | PLATING |
|----|-------------|-------|------------------------|------------|
| 01 | QSFP CAGE | 1PCS | STAINLESS STEEL T=0.25 | N/A |
| 02 | EMI FINGERS | 13PCS | COPPER ALLOY T=0.06 | NI FOR ALL |
- 2, TEMPERATURE:
OPERATION: -40°C~+85°C
STORAGE: -20°C~+70°C



CENTERLINE OF GUIDE POST



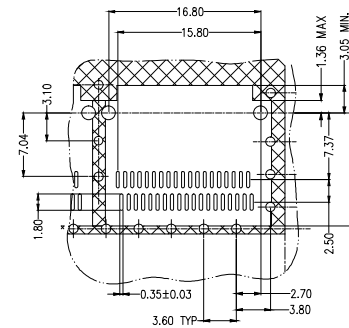
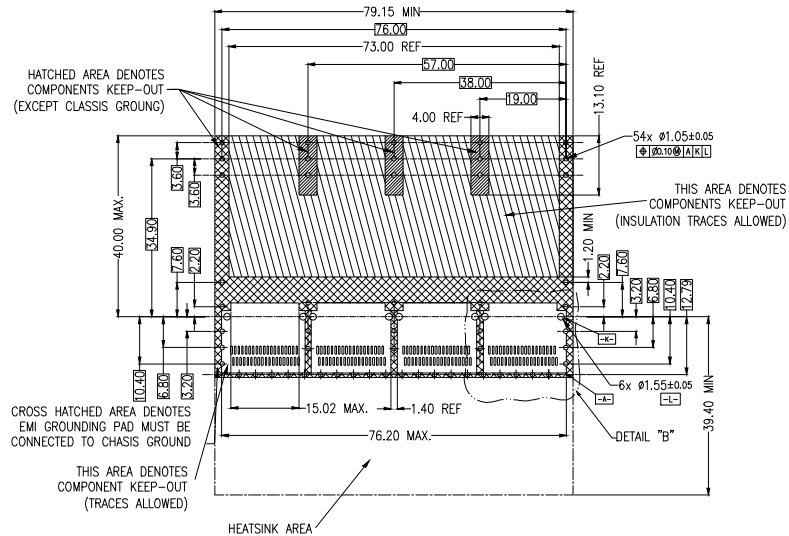
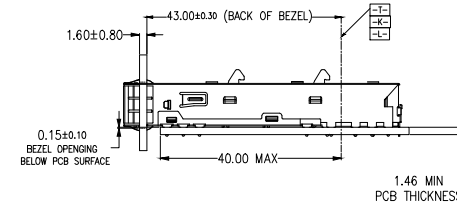
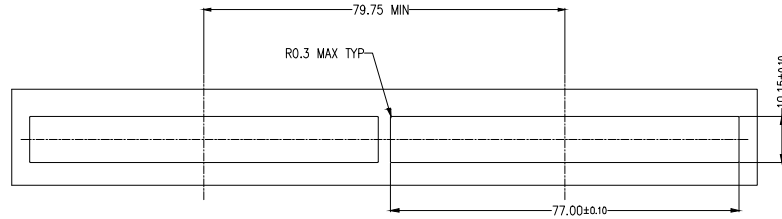
GENERAL TOLERANCE X. ±0.25 .X ±0.25 .XX ±0.20 .XXX ±0.15	ANGLE TOLERANCE X° ±0.5° .X° ±0.5° .XX° ±0.5°	DRAWN Andy	DATE 02/06/18
MATL SEE BOM	FINISH SEE NOTES	CHECKED	DATE
SCALE N/A	UNIT mm	APPROVED Hill	DATE 02/06/18
SHEET 1 OF 2			

genesis connected solutions	
TITLE 1X4 CAGE	
PART NUMBER 107-10064-01	
DRAWING NO. 107-10064	SIZE A4
REV. A	

PROPRIETARY INFORMATION
COMPANY CONFIDENTIAL

REV	ECN. NO.	DESCRIPTION	ENG	DATE
A		INITIAL	ANDY	02/06/18

RECOMMENDED BEZEL CUT-OUT SINGLE SIDED APPLICATIONS



DETAIL: B
SCALE: 2:1

- NOTES:
1. SEE QSPF MSA SPECIFICATION FOR BEZEL LOCATION TOLERANCE
 2. DATUM -A- IS TIP SURFACE OF HOST BOARD PER MSA
 3. FINISHED HOLE SIZE (AFTER PLATING)
 4. DATUM -K- IS HOST BOARD THRE HOLE #1 TO ACCEPT CONNECTOR GUIDE POST PER MSA
 5. DATUM -L- IS HOST BOARD THRE HOLE #2 TO ACCEPT CONNECTOR GUIDE POST PER MSA
 6. DATUM -T- IS HARD STOP ON CAGE PER MSA

GENERAL TOLERANCE X. ±0.25 .X ±0.25 .XX ±0.20 .XXX ±0.15		ANGLE TOLERANCE X° ±0.5° .X° ±0.5° .XX° ±0.5°		DRAWN Andy	DATE 02/06/18		TITLE 1X4 CAGE	
MATERIAL SEE BOM		FINISH SEE NOTES		CHECKED	DATE		PART NUMBER 107-10064-01	
SCALE N/A		UNIT mm		APPROVED Hill	DATE 02/06/18	DRAWING NO. 107-10064		SIZE A4
SHEET 1 OF 2								REV. A