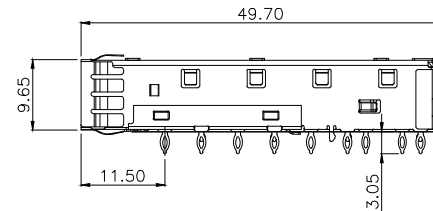
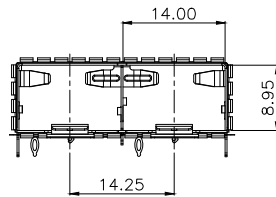
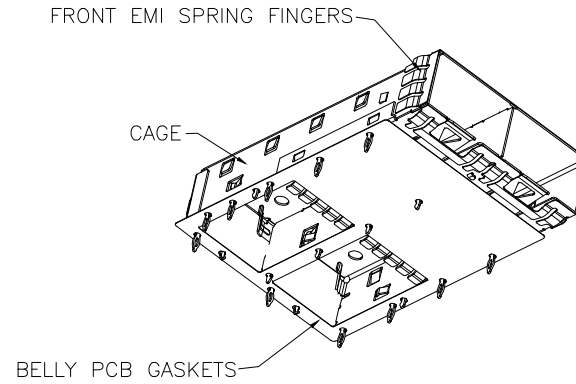
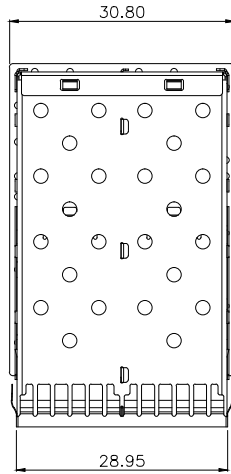


PROPRIETARY INFORMATION
COMPANY CONFIDENTIAL

REV.	ECN. NO.	DESCRIPTION	ENG	DATE
X1		PROPOSAL	JASON	2016/2/23
X2		REVISED	JASON	2016/3/12
X3		REVISED	JASON	2016/5/13



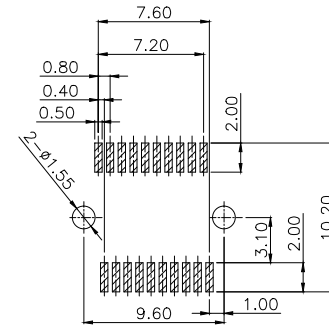
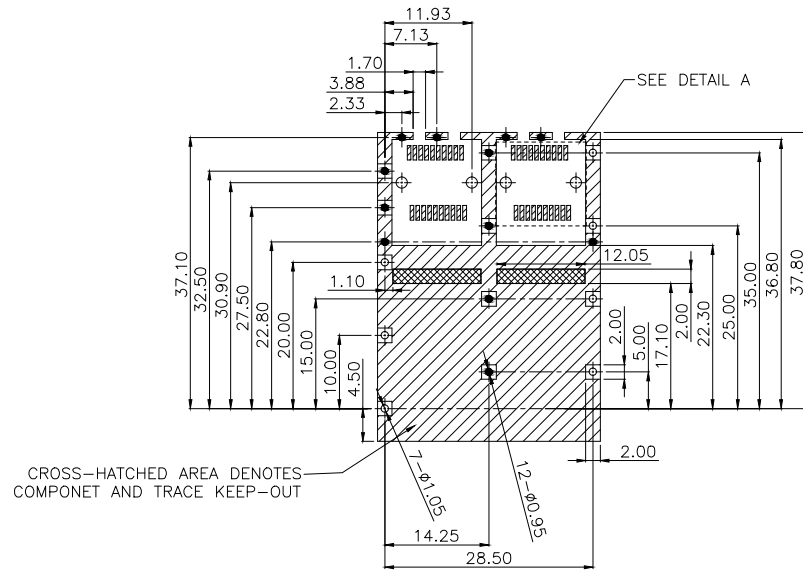
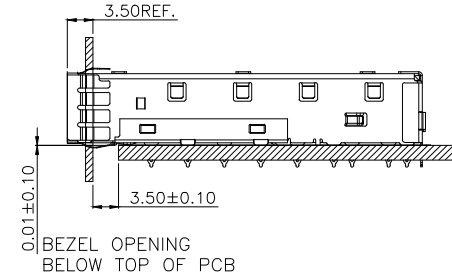
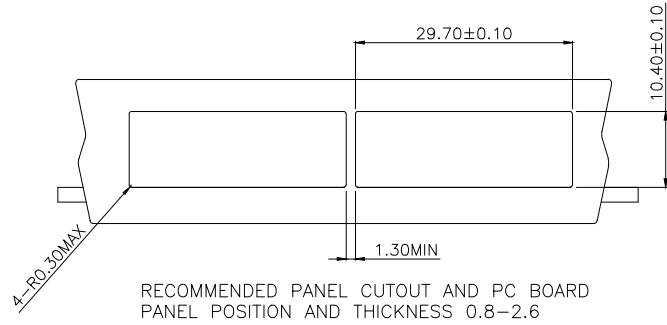
MATERIAL:

- 1.CAGE: 0.25mm THICK COPPER ALLOY,Ni-PLATED
- 2.FRONT EMI SPRING FINGERS: 0.10mm THICK COPPER ALLOY,Ni-PLATED
- 3.BELLY PCB GASKETS: COATED POLYIMIDE

GENERAL TOLERANCE X.± 0.50 .X± 0.38 .XX± 0.25 .XXX± 0.15	ANGLE TOLERANCE X°± 5.0° .X°± 3.0° .XX°± 2.0° .XXX°± 1.0°	DRAWN JASON	DATE 2016/5/13	
MATL SEE BOM	FINISH SEE BOM	CHECKED	DATE	
SCALE N/A	UNIT mm	APPROVED	DATE	PART NUMBER 107-10001-01
SHEET 1 OF 2				DRAWING NO. 107-10001
				SIZE A4
				REV. X3

PROPRIETARY INFORMATION
COMPANY CONFIDENTIAL

REV.	ECN. NO.	DESCRIPTION	ENG	DATE
X1		PROPOSAL	JASON	2016/2/23
X2		REVISED	JASON	2016/3/12
X3		REVISED	JASON	2016/5/13



EDGE OF BOARD
RECOMMENDED PCB LAOUT (COMPONENT SIDE)
PCB TOLERANCE: ±0.05
"□ ■ ●" ALL MARK ARE VIA HOLES

GENERAL TOLERANCE X ± 0.50 .X ± 0.38 .XX ± 0.25 .XXX ± 0.15	ANGLE TOLERANCE X° ± 5.0° .X° ± 3.0° .XX° ± 2.0° .XXX° ± 1.0°	DRAWN JASON	DATE 2016/5/13		TITLE SFP+28 1X2 CAGE ASSEMBLY PRESS FIT, EMI SPRING FINGER
MATL SEE BOM	FINISH SEE BOM	CHECKED	DATE		PART NUMBER 107-10001-01
SCALE N/A	UNIT mm	APPROVED	DATE	DRAWING NO. 107-10001	SIZE A4
SHEET 2 OF 2					REV. X3