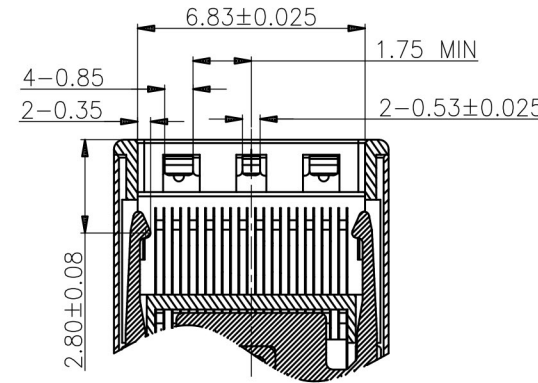
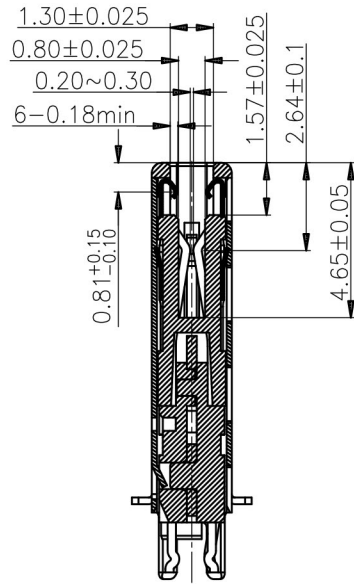
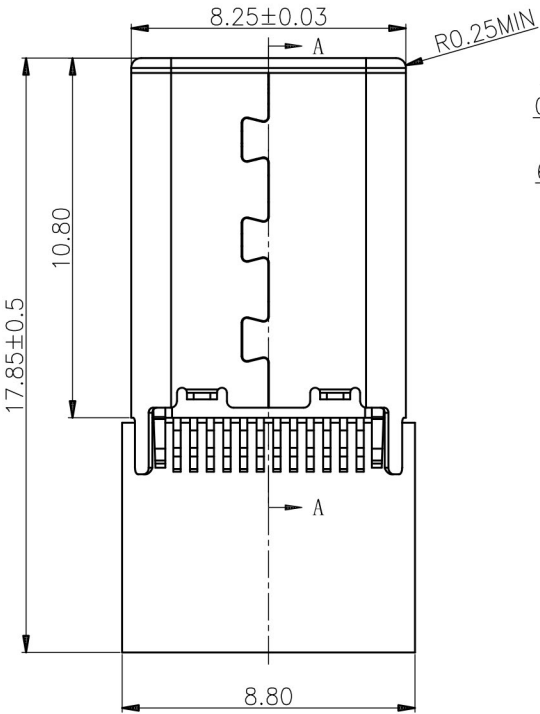
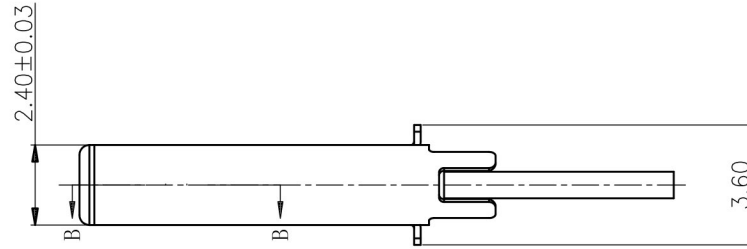
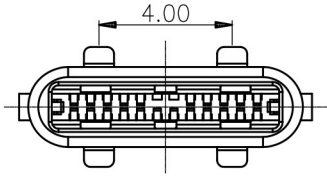


PROPRIETARY INFORMATION
COMPANY CONFIDENTIAL

REV	ECN. NO.	DESCRIPTION	ENG	DATE
A		INITIAL	Knight	05/18/15'

- NOTES:
- ELECTRICAL CHARACTERISTICS:
 - CONTACT CURRENT RATING:
A Current of 5.0A shall be applied collectively to VBUS pins (i.e.,pins A4,A9,B4,and B9)and 1.25 A applied to the VCONN pin (i.e.,B5 of the plug connector)with the return path through the corresponding GND pins (i.e.,pins A1, A12,B1,and B12). A minimum current of 0.25A shall also be applied individually to all the other contacts.
 - DIELECTRIC WITHSTANDING VOLTAGE:AC 100V R.M.S.
 - INSULATION RESISTANCE:100 MEGAOHMS MIN.
 - CONTACT RESISTANCE:40 MILLIOHMS MAX.
 - MECHANICAL CHARACTERISTICS:
 - INSERTION FORCE:5N~20N;
WITHDRAWAL FORCE:8N~20N up to 1,000 mating cycles;
after mating 6 N to 20 N.
 - DURABILITY CYCLE:10000 CYCLES,AND 200 CYCLES PER HOUR.
 - OPERATION TEMPERATURE:-40 DEG C TO +80 DEG C.



SECTION B-B

ORDER INFORMATION

USCW-13 22 - B K 1 3 X
① ② ③④⑤⑥⑦

- TYPE:
USCW-13:USB C TYPE PLUG
- POSITIONS:
22:22 POSITIONS
- INSULATOR MATERIAL:
B: LCP
- INSULATOR COLOR:
K: BLACK
- CONTACT PLATING:
1: GOLD FLASH
- SHIELD PLATING:
3: NICKEL PLATING
- PACKING:
T: TRAY
P: PE BAG

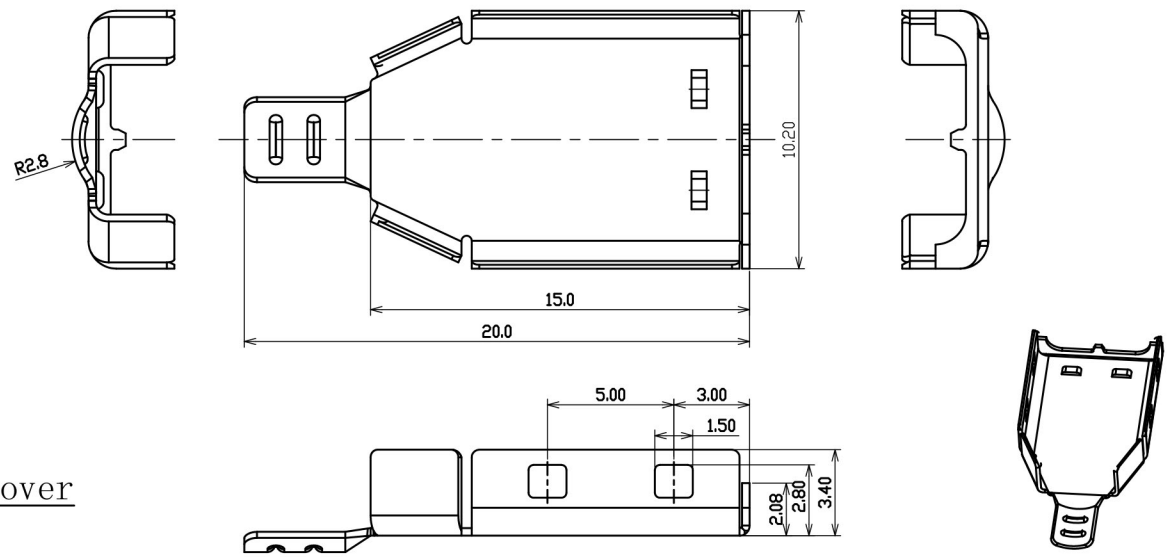
7	GROUND STRIP	2	SUS	T=0.10MM
6	PCB	1	EPOXY RESIN	GREEN
5	CARD HOOK	2	SUS, NICKEL 40u" MIN PLATING OVERALL	T=0.30MM
4	OUTER SHELL	1	SUS, NICKEL 40u" MIN PLATING OVER Cu 50u" MIN UNDER PLATING	T=0.15MM
3	CONTACT	22	PHOSPHOR BRONZE,GOLD FLASH PLATING ON CONTACT AREA,TIN 100u" MIN PLATING SOLDER AREA,NICKEL 40u" MIN UNDER PLATING OVERALL	T=0.25MM
2	TERMINAL SEAT	1	LCP+30%G.F	BLACK, UL94 V-0
1	HOUSING	1	LCP+30%G.F	BLACK, UL94 V-0
ITEM	NAME	Q'TY	DESCRIPTION	NOTE

GENERAL TOLERANCE	ANGLE TOLERANCE	DRAWN	DATE
X±0.50 .X±0.38 .XX±0.25 .XXX±0.15	X°±5.0° .X°±3.0° .XX°±2.0° .XXX°±1.0°	<i>knighe</i>	05/18/15'
MATL	SEE BOM	CHECKED	DATE
FINISH	SEE NOTES		
SCALE	N/A	UNIT	mm
SHEET	1 OF 2	APPROVED	DATE
		<i>River</i>	05/18/15'

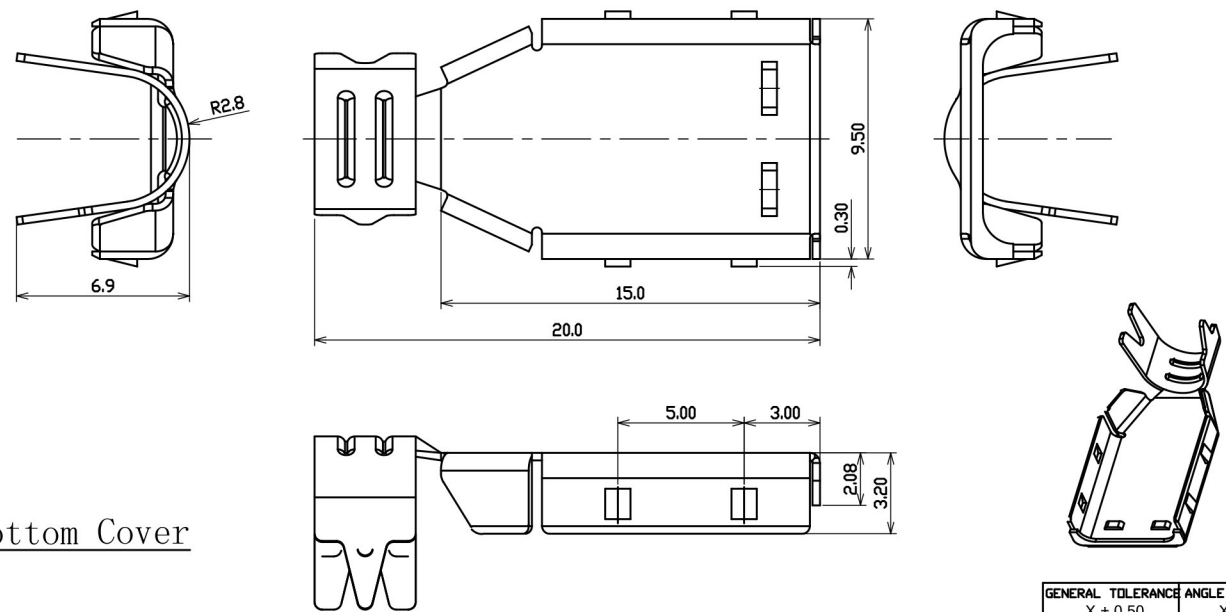
GENESIS TECHNOLOGY, INC.	
TITLE: USB C TYPE PLUG	
PART NUMBER: USCW-1322-BK13X	
DRAWING NO.	SIZE
GT26-210481	A4
	REV. A

PROPRIETARY INFORMATION
COMPANY CONFIDENTIAL

REV.	ECN. NO.	DESCRIPTION	ENG	DATE
A		INITIAL	Knight	05/18/15'



Shell Top Cover



Shell Bottom Cover

GENERAL TOLERANCE X ± 0.50 .X ± 0.38 .XX ± 0.25 .XXX ± 0.15	ANGLE TOLERANCE X° ± 5.0° .X° ± 3.0° .XX° ± 2.0° .XXX° ± 1.0°	DRAWN <i>knighe</i>	DATE 05/18/15'		TITLE USB C TYPE PLUG
MATL SEE BOM	FINISH SEE NOTES	CHECKED	DATE		PART NUMBER USCW-1322-BK13X
SCALE N/A	UNIT mm	APPROVED <i>River</i>	DATE 05/18/15'	DRAWING NO. GT26-210481	SIZE A4 REV. A
SHEET 2 OF 2					

2	BOTTOM SHELL	1	SPCC, NICKEL 40u" MIN PLATING OVER Cu 50u" MIN UNDER PLATING OVERALL	T=0.30MM
1	TOP SHELL	1	SPCC, NICKEL 40u" MIN PLATING OVER Cu 50u" MIN UNDER PLATING OVERALL	T=0.30MM
ITEM	NAME	Q'TY	DESCRIPTION	NOTE