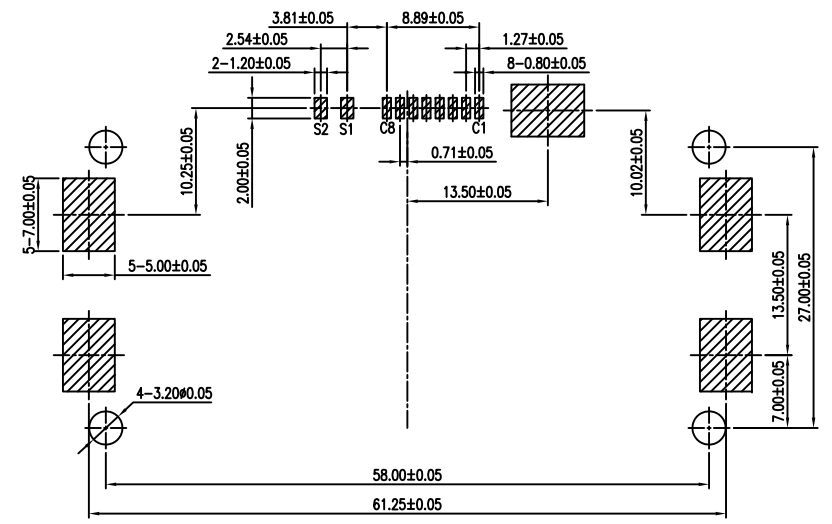
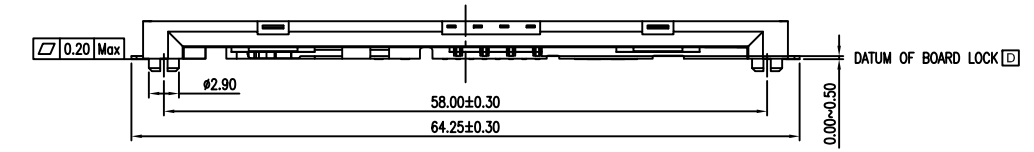
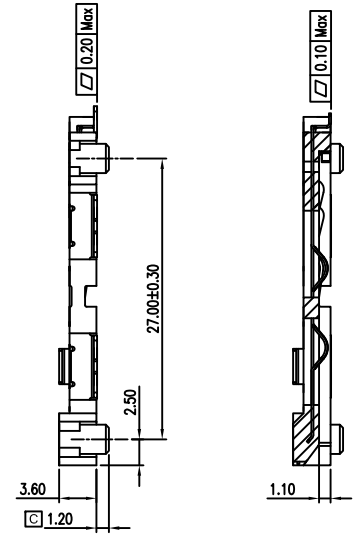
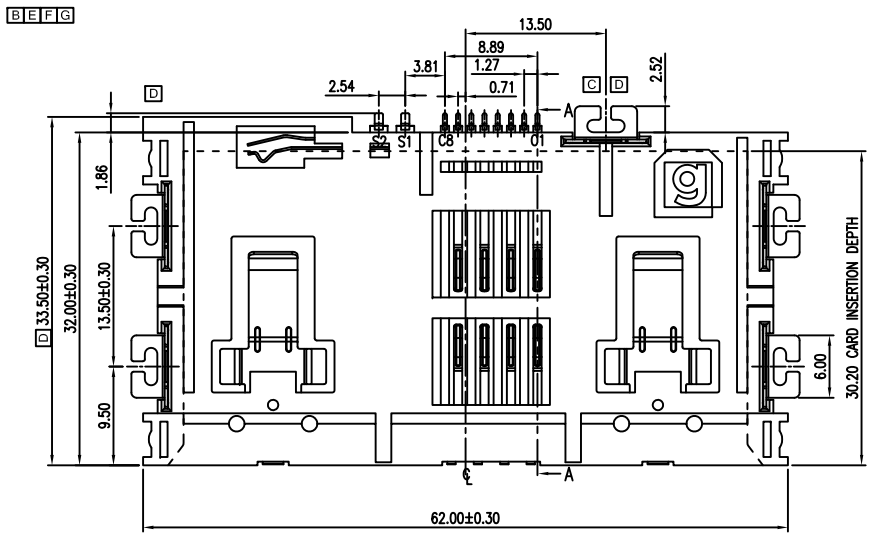


REV.	ECN. NO.	DESCRIPTION	ENG	DATE
A		ISSUED	DANIEL	08/20/10
B		REVISED DRWAING	DANIEL	08/24/10
C		ERASE BOARD LOCK AND ADD DIMENSION	DANIEL	08/26/10
D		ADD BOARD LOCK AND REVISED DRWAING	DANIEL	09/04/10
F		REVISED DRWAING	DANIEL	10/11/10
F		REVISED DRWAING	DANIEL	11/05/10
G		REVISED DRWAING	DANIEL	02/18/11
H		EDITED NOTES 5 WAS 80°C	AXL	1/21/14



PART. NUMBER

SMCR-49 08 - B K 5 0 I 01
 ① ② ③④⑤⑥⑦

- ① CONNECTOR
SMCR-49: SMART CARD, FEMALE, SMT TYPE
- ② POSITION:
08: 08 POSITIONS
- ③ INSULATOR MATERIAL
B: LCP
- ④ INSULATOR COLOR
K: BLACK
- ⑤ CONTACT PLATING
5: 15u" GOLD
- ⑥ SHIELD PLATING
0: NONE-SHIELD
- ⑦ PACKING
T: TRAY

- NOTES:**
- THE CONTACT LOCATIONS AND PIN OUT MUST COMPLY WITH ISO7816-2
 - MATERIALS:**
HOUSING: LCP+30% G.F. UL94V-0, COLOR: BLACK
CONTACTS: COPPER ALLOY
SWITCH: COPPER ALLOY
BOARD LOCK: COPPER ALLOY
SPRING: STAINLESS STEEL
 - FINISH:**
CONTACTS: PLATE NICKEL 50u" MIN OVER ALL SURFACE
GOLD 15u" ON MATING SURFACE, TIN 80u" MIN IN SOLDER TAIL.
SWITCH: PLATE NICKEL 50u" MIN OVER ALL SURFACE
GOLD FLASH ON MATING SURFACE
BOARD LOCK: PLATE NICKEL 50u" MIN OVER ALL SURFACE
TIN 80u" MIN IN SOLDER TAIL.
 - NDS MATING FORCE AND UNMATING FORCE: 3N MIN, 7N MAX
 - OPERATING TEMPERATURE RANGE: -30°C ~ + 88°C
 - CURRENT RATING: 1 AMP MAX.
 - VOLTAGE: AC35V/PIN
 - INSULATION RESISTANCE: 1000MΩ
 - RoHS COMPLIANT

TOLERANCE	
LINEAR	ANGLES
X.±	X°.± 3'
.X±0.38	.X°±
.XX±0.25	.XX°±
.XXX±0.10	.XXX°±

GENESIS TECHNOLOGY, INC.
 A Genesis Electro-Mechanical Company
 7F, No. 191, Sec. 2
 Chung-Yang Rd.,
 Tu-Cheng City
 Taipei Hsien, Taiwan

TITLE: SMART CARD FEMALE SMT TYPE CONNECTOR			
PART NO. SMCR-4908-BK50T01			
DWG NO. GTi10-25115			
UNITS	SCALE	SHEET	REV
	MM	NONE	10F1 H

APPD:	MAT'L:
CHKD:	FINISH:
DRWN: Daniel	Q'TY: