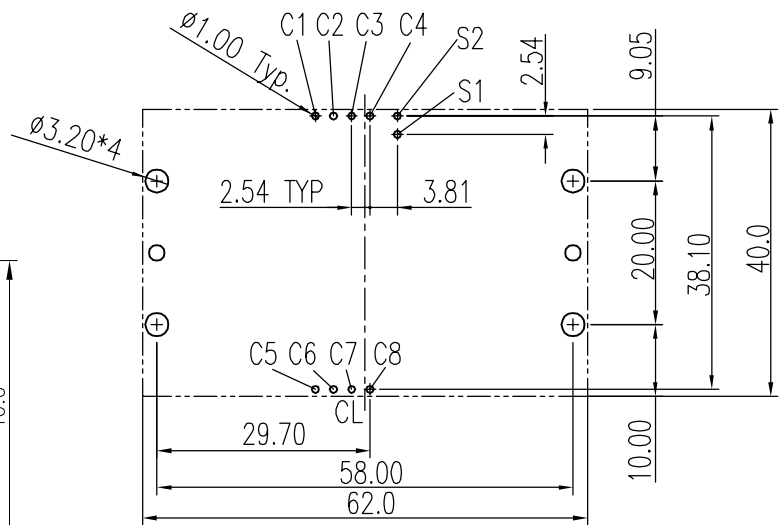
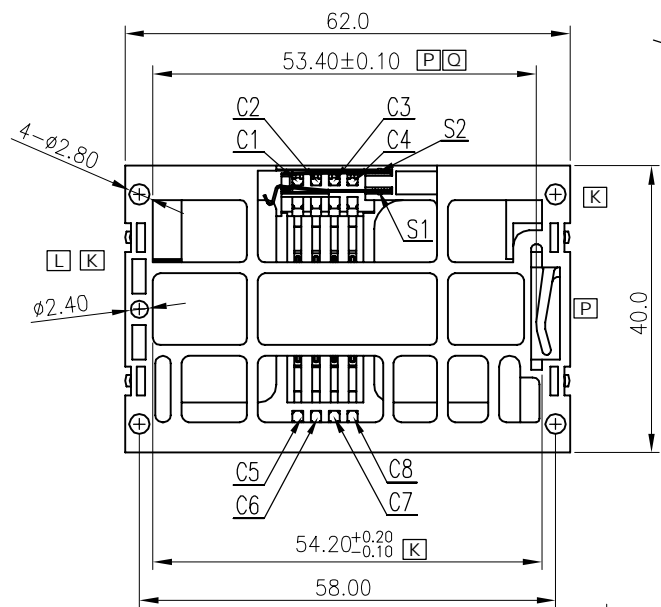
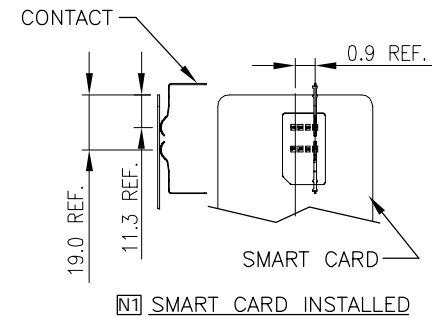


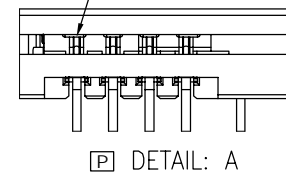
A
B
C
D
E



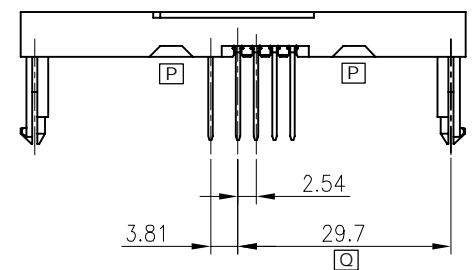
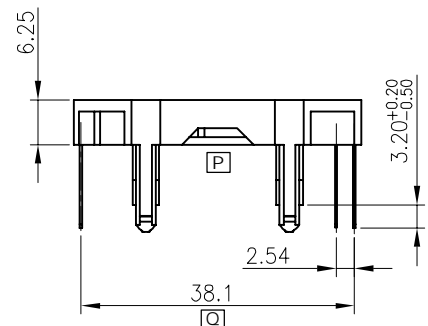
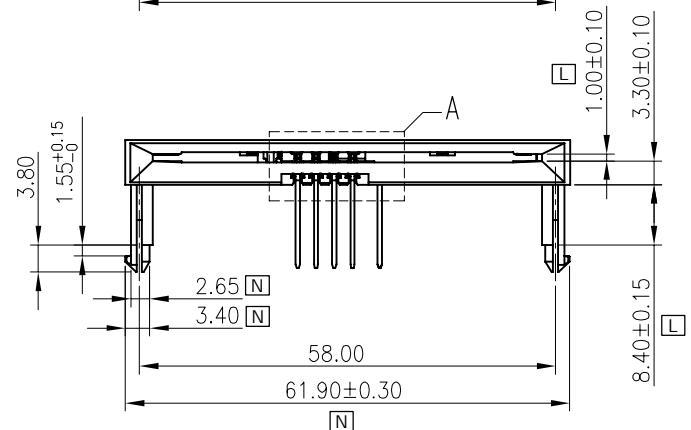
PCB Layout & Pin Out
 □□ Tol.: ±0.05mm



Total 8 Contacts must touch plastic housing (w/o Smart card)



□P DETAIL: A



TOLERANCE	
LINEAR	ANGLES
X. ± 0.50	X° ± 2.00°
.X ± 0.30	.X° ± 1.00°
.XX ± 0.20	.XX° ± 0.50°
.XXX ± 0.10	.XXX° ± 0.10°

GENESIS
 TECHNOLOGY, INC
 1015 GRANT STREET S.E.
 ATLANTA, GA 30315
 a Genesis Electro-Mechanical Company

TITLE: SMART CARD CONNECTOR
 NORMAL CLOSE TYPE

PART NO. SMCR-2308-AKX0T1

DWG NO. SC-10421

□	SEE SHEET 2			APPD:	MAT'L:	UNITS	SCALE	SHEET	REV
REV	ECN NO.	NAME	DATE	CHKD:	FINISH:	MM	NONE	1 OF 2	Q
				DRWN: AXL	Q'TY:				

A

B

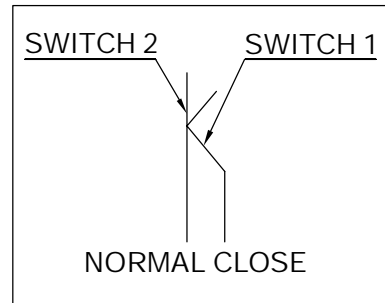
C

D

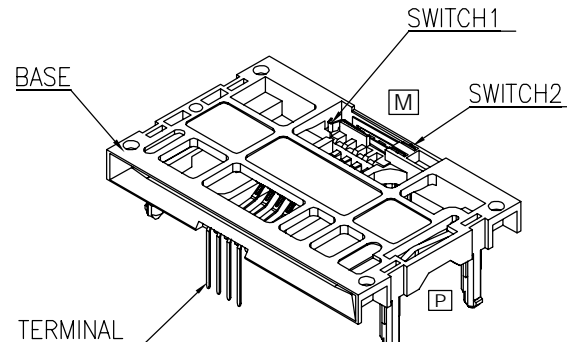
E

NOTE:

- 1.BASE MATERIAL: PBT+30%G.F UL94V-0 COLOR: BLACK.
- [F] [P] 2.TERMINAL MATERIAL: PHOSPHOR BRONZE, THICKNESS = 0.30 ± 0.02
FINISH: SELECTIVE GOLD PLATE ON CONTACT AREA
50u" MIN.TIN PLATE ON SOLDER TAIL AREA,
40u" MIN. NICKEL UNDER-PLATING
- [P] 3.SWITCH PIN 1: PHOSPHOR BRONZE, THICKNESS = 0.25 ± 0.02
FINISH: GOLD FLASH PLATE ON CONTACT AREA
50u" MIN.TIN PLATE ON SOLDER TAIL AREA,
40u" MIN. NICKEL UNDER-PLATING
- [P] 4.SWITCH PIN 2: PHOSPHOR BRONZE, THICKNESS = 0.25 ± 0.02
FINISH: GOLD FLASH PLATE ON CONTACT AREA
50u" MIN.TIN PLATE ON SOLDER TAIL AREA,
40u" MIN. NICKEL UNDER-PLATING
- 5.OPERATING TEMPERATURE: - 40°C ~ +80°C .
- 6.CURRENT RATING: 1 Amp MAX.
- [L] 7.RoHS 6/6 COMPLIANT.



[Q]	UPDATED DIMENSIONS	Jesse	05/21/12'
[P]	UPDATED DRAWING	Jesse	04/03/12'
[O]	ADD PINOUT	AXL	3/1/12'
[N1]	ADD DETAIL AFTER SMART CARD INSTALLED	AXL	8/19/10'
[N]	ADDED TOL. TO C2 DIM. 2.65 CHANGED DIM. MEASURED POINT ON ZONE C2 WAS: 3.10 IS: 3.40±0.20 CORRECTED DIM 61.90 TOL. C2 WAS: 0.15 IS: 0.30 CORRECTED CONTACT PLATING INFORMATION	AXL	7/13/10'
[M]	CHANGED CONTACT PLATING OPTION 5 TO SWITCH PLATED GOLD FLASH	AXL	6/1/10'
[L]	REVISE ZONE B3 DIM. WAS 1.0, IS 1.20, ZONE C3 DIM. AND LOCATION WAS 11.7, IS 8.40 ZONE B1 DIA. TO 2.80 4PLC AND 2.40 2PLC CHANGE NOTES 9 TO RoHS 6/6 COMPLIANT.	AXL	3/2/10'
[K]	REVISE DRAWING AND PN	Vegas	05/14/09'
[J]	ADD TOLERANCE ON PIN LENGTH	AXL	11/10/08'
[I]	CHANGE THE MEASURED POINT OF 11.7	Kevin	10/29/08'
[H]	REVISE DIM. WAS 12.21 REVISE DIM. WAS 2.7	Kevin	10/28/08'
[G]	Part Number Change	AXL	8/26/08'
[F]	Change term. thickness was 0.25	AXL	7/10/08'
[E]	CORRECT TERMINAL LENGTH WAS 3.20 mm	AXL	6/27/08'
[D]	UPDATED DRAWING	AXL	11/3/06'
[C]	REVISE DIM. WAS 12.19	AXL	8/9/06'
[B]	REVISE DIM. WAS 11.65	AXL	7/31/06'
[A]	ISSUED	AXL	7/28/06'
REV	ECN NO.	NAME	DATE



[K] SMCR- 23 08 - A K X 0 T 1

① ② ③ ④ ⑤ ⑥ ⑦

1. CONNECTOR:

SMCR: SMART CARD R/A CONNECTOR

2. TYPE:

23: FEMALE, DIP, WITH CLOSE TYPE SWITCH, HEIGHT 3.3mm

3. POSITIONS

08: 8 POSITIONS

4. INSULATOR MATERIAL

A: PBT

5. INSULATOR COLOR

K: BLACK

6. CONTACT PLATING

[N] [M] 5: GOLD 15 u"; SWITCH GOLD FLASH PLATE
9: GOLD FLASH, SWITCH GOLD FLASH PLATE

7. SHIELD PLATING

0: NONE SHIELD

PART NO.	SMCR-2308-AKX0T1	SHEET
DWG NO.	SC-10421	2 OF 2

1

2

3

4

5

6

7

8