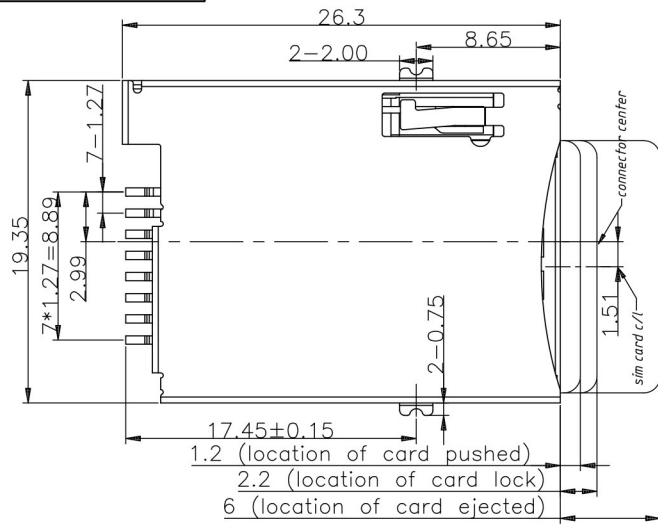
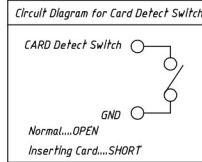


PROPRIETARY INFORMATION
COMPANY CONFIDENTIAL

| REV. | ECN. NO. | DESCRIPTION | ENG | DATE |
|------|----------|--------------------------|--------|-----------|
| A | | NEW RELEASE | suo | 05/07/14' |
| B | | ADD WITHOUT POST PRODUCT | suo | 05/16/14' |
| C | | ADD ORDER INFORMATION | Knight | 07/29/15' |



| Connector Terminal NO. | Pin NO. |
|------------------------|------------------------|
| Pin 1 | VCC |
| Pin 2 | GND |
| Pin 3 | RST |
| Pin 4 | VPP |
| Pin 5 | CLK |
| Pin 6 | I/O |
| Pin 7 | CD: CARD Detect Switch |
| Pin 8 | CD: CARD Detect Switch |



NOTES:

1. Current Rating:0.5A.
2. Withstanding Voltage:AC500V r.m.s.
3. Insulation Resistance:1000MΩ Minimum at DC 500V.
4. Contact Resistance:100Miliohms Maximum.
- 5.Mating Cyeles: 10000 Insertions.
- 6.Operating Temperature:-40°C to +85°C.
7. Can accord with management standards for "environment-related substances to be controlled"

ORDER INFORMATION

SIMR-2X 08 - B K 1 4 R
① ② ③ ④ ⑤ ⑥ ⑦

1. TYPE:

- SIMR-2J:SIM CARD CONNECTOR WITH POST
- SIMR-2K:SIM CARD CONNECTOR WITHOUT POST

2. POSITIONS:

08:08 POSITIONS

3. INSULATOR MATERIAL:

B: LCP

4. INSULATOR COLOR:

K: BLACK

5. CONTACT PLATING:

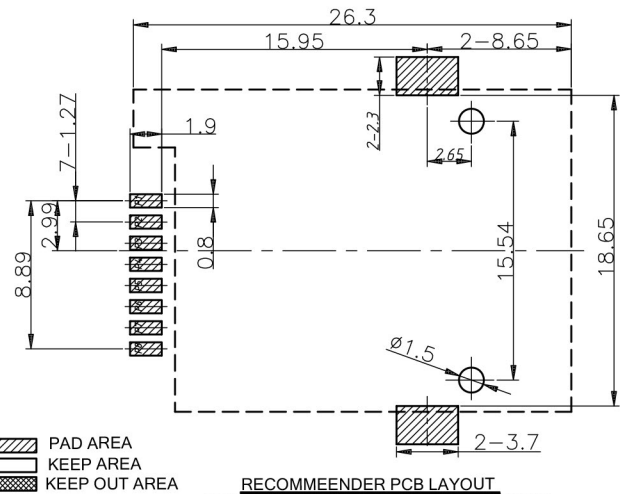
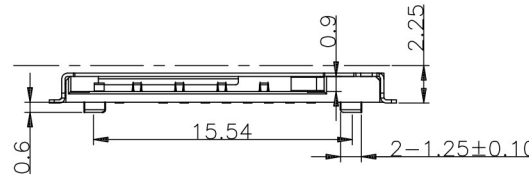
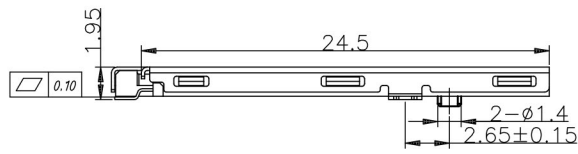
1: GOLD FLASH

6. SHIELD PLATING:

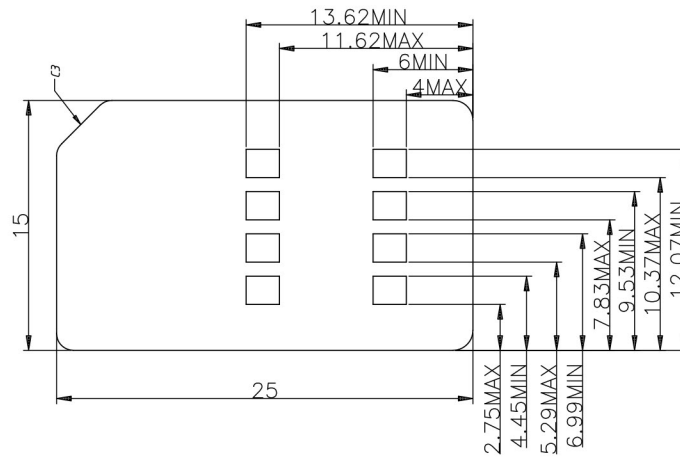
4: GOLD FLASH

7. PACKING

R: TAPE&REEL



RECOMMEENDER PCB LAYOUT
TOLERANCE UNLESS OTHERWISE IS ±0.05



| ITEM | NAME | Q'TY | DESCRIPTION | MATERIAL | FINISH / COLOR | NOTE |
|------|---------|------|-------------|------------|--|---------|
| 6 | SPRING | 1 | | SWP | 30u" NICKEL MIN UNDERPLATING | |
| 5 | LINK | 1 | | SUS304 | | |
| 4 | GUIDE | 1 | | PA46+20%GF | Black | UL-94V0 |
| 3 | CONTACT | 8 | T=0.15mm | C5210 | 1u" Au MIN & 100u" Tin OVER 30u" NICKEL MIN UNDERPLATING | |
| 2 | SHELL | 1 | T=0.20mm | SUS201 | 1u" Au MIN OVER 30u" NICKEL MIN UNDERPLATING | |
| 1 | HOUSING | 1 | | LCP+30%GF | Black | UL-94V0 |

| GENERAL TOLERANCE | ANGLE TOLERANCE | DRAWN | DATE |
|-------------------|-----------------|---------------|-----------|
| X± | X°± | <i>knighe</i> | 07/29/15' |
| .X± 0.38 | .X°± | CHECKED | DATE |
| .XX± 0.25 | .XX°± | APPROVED | DATE |
| .XXX± 0.15 | .XXX°± | <i>River</i> | 07/29/15' |
| MATL | SEE BOM | | |
| FINISH | SEE NOTES | | |
| SCALE | N/A | | |
| SHEET | 1 OF 1 | | |

| ENESIS TECHNOLOGY, INC | |
|------------------------|--------------------------|
| TITLE | SIM CARD 6+2PIN TOP PUSH |
| PART NUMBER | SIMR-2X08-BK14R |
| DRAWING NO. | GT23-210148 |
| SIZE | A4 |
| REV. | C |