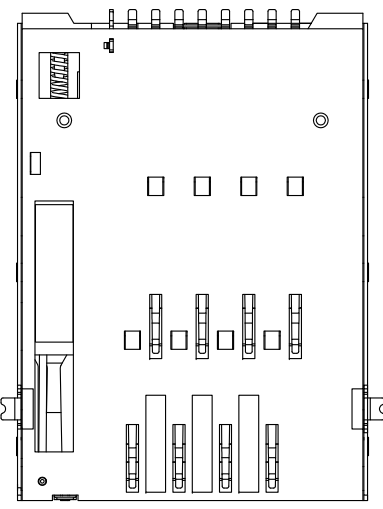
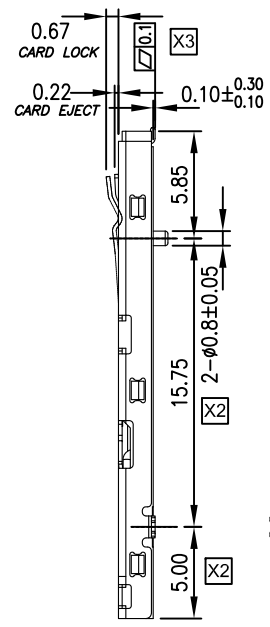
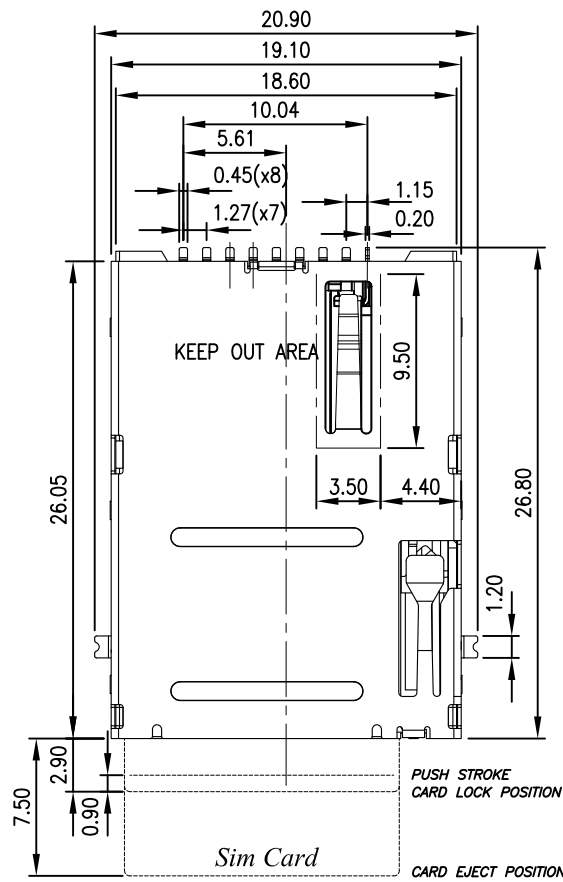


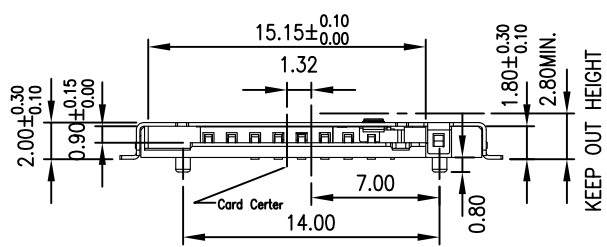
REV.	ECN. NO.	DESCRIPTION	ENG	DATE
X1		INITIAL	AXL	4/19/12'
X2		CHANGED DIM.	AXL	7/9/12'
X3		ADD DIM.	AXL	3/14/13'



**PART. NUMBER**

**SIMR-22 09 - B K \* 3 R 1C**

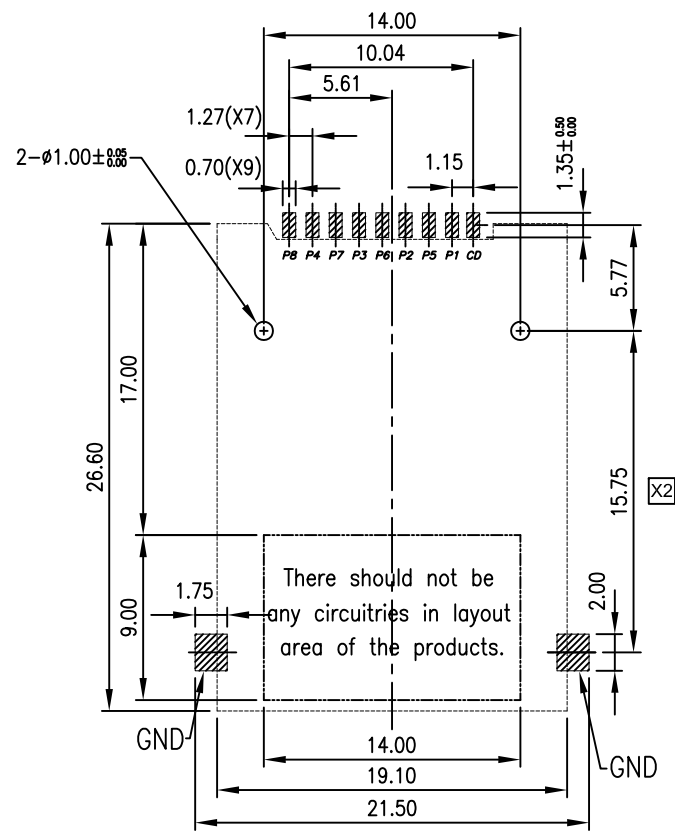
- ① CONNECTOR:  
SIMR: SIMM CARD READER
- ② TYPE:  
22: SMT TYPE CONNECTOR WITH PUSH PUSH MICRO SIMM
- ③ POSITION:  
09: 9 POSITIONS
- ④ HOUSING MATERIAL:  
B: LCP, UL94V-0
- ⑤ INSULATOR COLOR:  
K: BLACK
- ⑥ CONTACT PLATING:  
1: GOLD FLASH  
3: 5u" GOLD  
4: 10u" GOLD  
6: 30u" GOLD
- ⑦ SHIELD PLATING :  
3: NICKEL PLATING



**PRELIMINARY  
NOT RELEASED**

GENERAL TOLERANCE X.± .X±0.40 .XX±0.30 .XXX±0.20	ANGLE TOLERANCE X°± .X°± .XX°± .XXX°±	DRAWN AXL	DATE 4/19/12'	
MATL SEE BOM	FINISH SEE NOTES	CHECKED	DATE	
SCALE N/A	UNIT mm	APPROVED	DATE	PART NUMBER SIMR-2209-BKX3R1C
SHEET 1 OF 2				DRAWING NO. GT17-300173
				SIZE A4 REV. X3

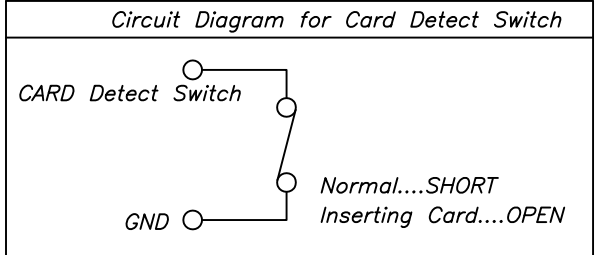
REV.	ECN. NO.	DESCRIPTION	ENG	DATE
		SEE SHEET 1		



**P.C.B LAYOUT**  
 TOP VIEW(General Tolerance±0.05)  
 There should not be any circuitries in the layout space of the products.

Specification  
 \* Electrical Characteristics :  
 Current Rating:0.5A.  
 Withstanding Voltage:AC500V r.m.s.  
 Insulation Resistance:1000Megohms Minimum at DC 500V.  
 Contact Resistance:100Miliohms Maximum.  
 \*Mechanical Characteristics:  
 Mating Cycles: 5000 Insertions.  
 \* Environmental :  
 Operating Temperature:-25°C to +85°C.  
 \* Material:  
 1.Housing:HI-Temp plastic UL 94V-0 Rated.  
 2.Contact:Copper Alloy.  
 3.Shell:Copper Alloy.  
 RoHS Compliant

Connctor terminal NO.	Pin NO.
Pin 1	VCC: PWR signal and GND
Pin 2	RST: Reset signal
Pin 3	CLK: Clocking signal
Pin 4	Reserved
Pin 5	GND: PWR signal and GND
Pin 6	VPP: programming Voltage
Pin 7	I/O: serial date input/output
Pin 8	Reserved



**PRELIMINARY  
 NOT RELEASED**

GENERAL TOLERANCE X.± .X±0.40 .XX±0.30 .XXX±0.20	ANGLE TOLERANCE X°± .X°± .XX°± .XXX°±	DRAWN AXL	DATE 4/19/12'	
MATERIAL SEE BOM		CHECKED	DATE	
FINISH SEE NOTES		APPROVED		PART NUMBER SIMR-2209-BKX3R1C
SCALE N/A	UNIT mm	DATE		DRAWING NO. GT17-300173
SHEET 2 OF 2				SIZE A4 REV. X3