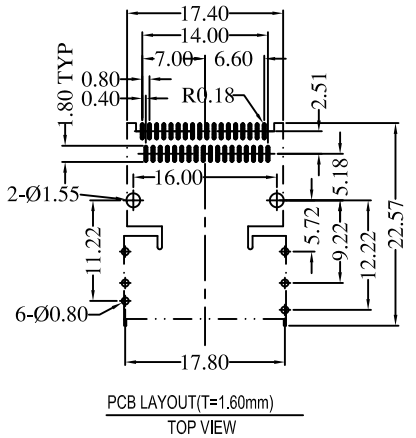
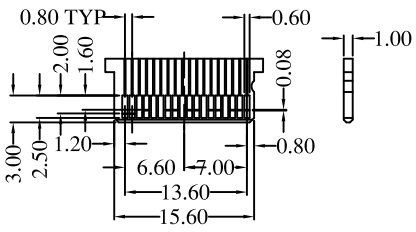
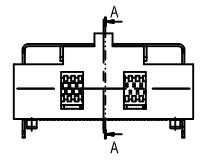



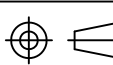
**NOTES:**

- \*Material
  - Housing: LCP+50%GF, UL 94V-0 rated, Color: Black;
  - Contact: Phosphor Bronze.
  - Plating: Gold plating over 40u" min. Nickel on contact area; 100u" min. Tin plating on solder tail.
  - Shell: Phosphor Bronze.
  - Plating: Tin Plating Over Ni.
- \*Mechanical
  - Insertion Force: 50N Max.
  - Withdrawal Force: 5N Min.
  - Contact Retention Force: 250 Cycles.
- \*Electrical Specification
  - Current Rating: 0.5 Amps 30°C Max per contact;
  - Contact Resistance: 30 milliohms Max.
  - Insulation Resistance: 1000 Megohms Min.
  - Dielectric Withstanding Voltage: 300V AC
- \*Environmental
  - Operating Temperature: -40°C to +85°C
- \*RoHS Compliant



**ORDER INFORMATION**  
 MSAR - 22 26 - B K 5 1 T 1F  
 ① ② ③ ④ ⑤ ⑥ ⑦ ⑧

- CONNECTOR:  
MSAR: MINI SAS CONNECTOR
- TYPE:  
22: MINI SAS 36PIN WITHOUT KEY
- POSITIONS:  
36: 36 POSITIONS
- BODY MATERIAL:  
B: LCP
- BODY COLOR:  
K: BLACK
- CONTACT PLATING:  
5: GOLD 15u"
- SHIELD PLATING:  
1: Tin PLATING
- PACKING  
T: TRAY PACKING

TOLERANCE		 7F, No. 191, Sec. 2 Chung-Yang Rd., Tu-Cheng City Talpei Hsien, Taiwan A Genesis Electro-Mechanical Company	TITLE:			
LINEAR	ANGLES		MINI SAS 36PIN WITHOUT KEY			
X. ±	X° ±		PART NO. MSAR-2236-BK51T1F			
.X ± 0.38	.X° ± 3°	APPD:	MAT'L:			DWG NO. GTH10-20142
.XX ± 0.25	.XX° ± 3°	CHKD:	FINISH:			 UNITS SCALE SHEET REV mm NONE 1 OF 1 A
.XXX ± 0.20	.XXX° ± 3°	DRWN: Kevin	Q'TY:			

[A]	ISSUED	Kevin	09/27/10'
REV.	ECN NO.	NAME	DATE