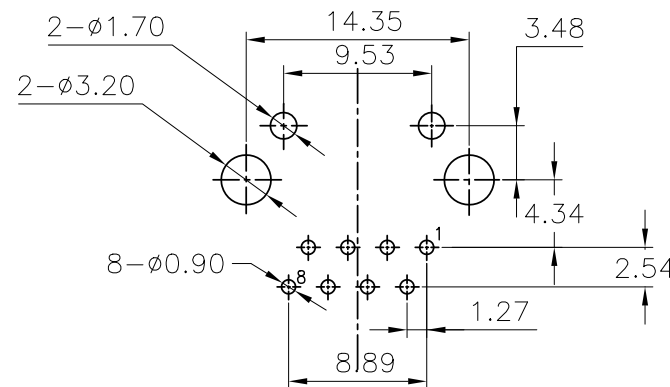
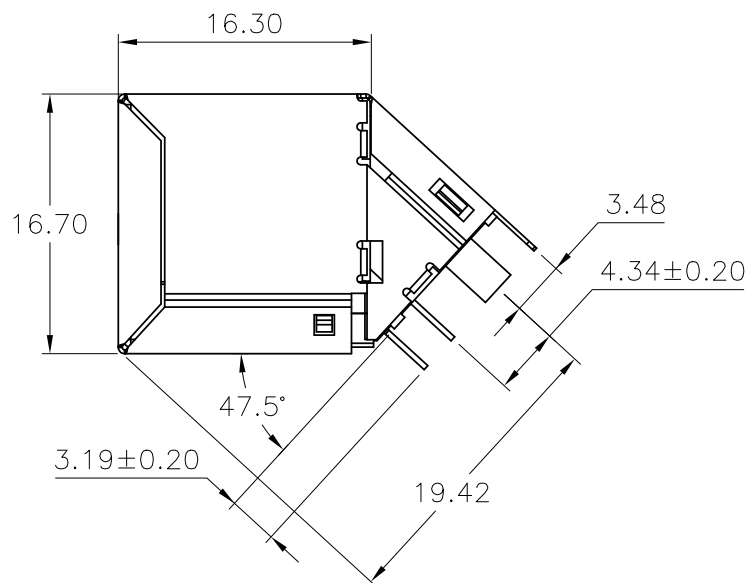
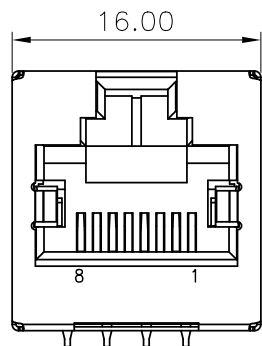


PROPRIETARY INFORMATION  
COMPANY CONFIDENTIAL

REV.	ECN. NO.	DESCRIPTION	ENG	DATE
X1		INITIAL	Hill	3/18/15"

Notes:

- Materials:
  - Housing: Black Glass Filled Thermoplastic(UL94V-0)
  - RJ contacts: Phosphor Bronze  
Finish: Selective gold plate see table
  - Shield Material: Copper Alloy
- Tolerances comply with EIA/TIA 568 dimension requirements
- Wave solder compatible for 260°C for 5 seconds
- UL approval Per DUXR2 & DUXR8



PC Board Layout t=1.6mm  
Component Side Show



MP45-W01C-60A-00W5	50 Micro Inches
MP45-W01C-60A-00W4	30 Micro Inches
MP45-W01C-60A-00W3	15 Micro Inches
MP45-W01C-60A-00W2	6 Micro Inches
MP45-W01C-60A-00W1	Flash
Part Number	RJ Contact Plating Thickness (Au)

GENERAL TOLERANCE	ANGLE TOLERANCE	DRAWN	DATE	ENESIS TECHNOLOGY, INC.	
X± 0.50	X°± 5.0°	Ryan	3/19/15"	TITLE: CAT.6 MODULAR JACK 47.5° STP	
.X± 0.38	.X°± 3.0°	CHECKED	DATE	PART NUMBER: MP45-W01C-60A-00WX	
.XX± 0.25	.XX°± 2.0°	Hill	3/19/15"	DRAWING NO. GT26-700327	
.XXX± 0.15	.XXX°± 1.0°	APPROVED	DATE	SIZE A4	REV. X1
MATL SEE BOM		Bryan	3/19/15"		
FINISH SEE BOM					
SCALE N/A	UNIT mm				
SHEET 1 OF 1					