

REV.	ECN. NO.	DESCRIPTION	ENG	DATE
A		ISSUED	Jesse	05/22/13'
B		ADD R FILLET	Jesse	05/31/13'
C		MODIFY TOLERANCE	Jesse	06/04/13'
D		UPDATE DRAWING	Jesse	10/31/13'

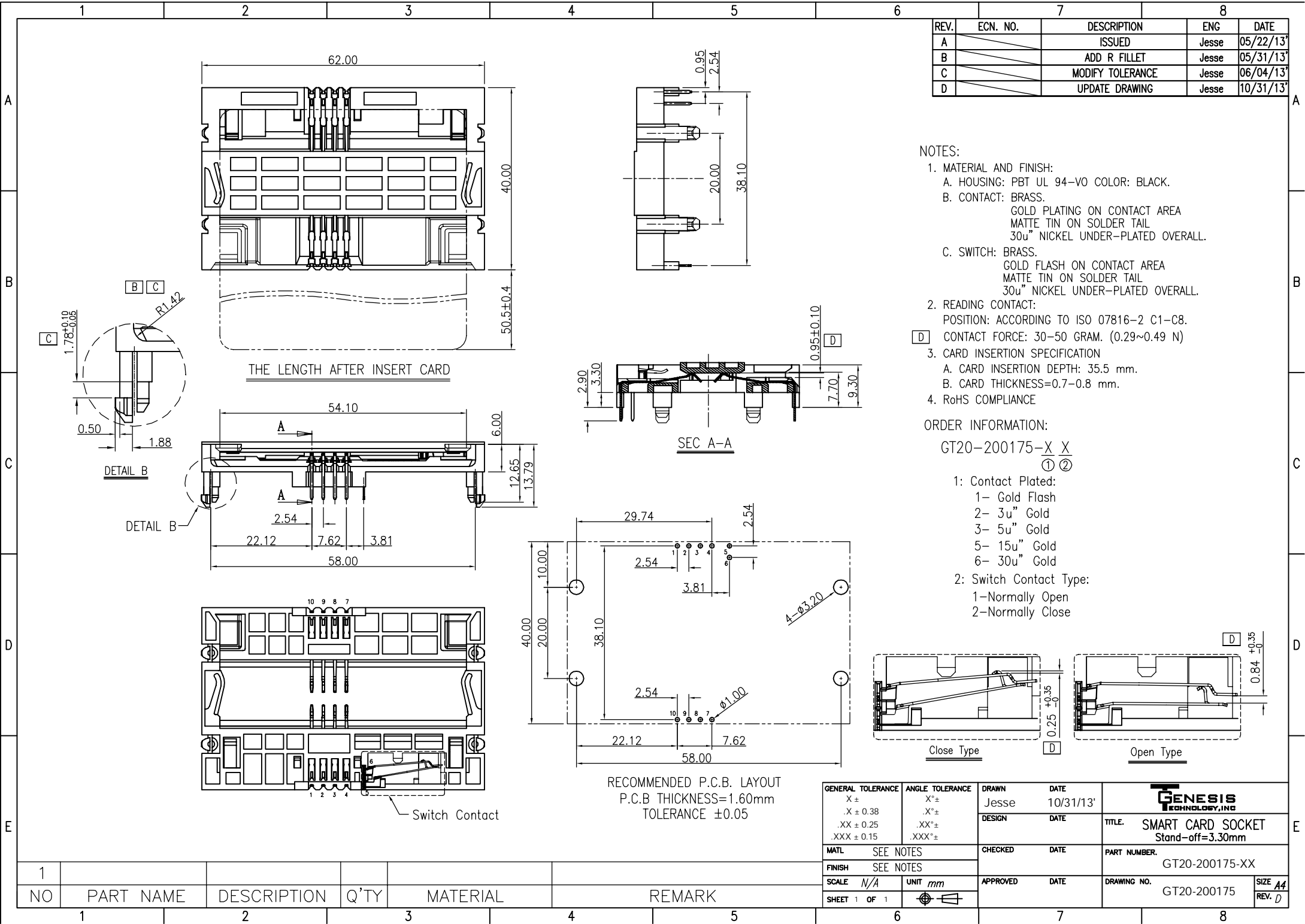
NOTES:

- MATERIAL AND FINISH:
  - A. HOUSING: PBT UL 94-V0 COLOR: BLACK.
  - B. CONTACT: BRASS.
    - GOLD PLATING ON CONTACT AREA
    - MATTE TIN ON SOLDER TAIL
    - 30u" NICKEL UNDER-PLATED OVERALL.
  - C. SWITCH: BRASS.
    - GOLD FLASH ON CONTACT AREA
    - MATTE TIN ON SOLDER TAIL
    - 30u" NICKEL UNDER-PLATED OVERALL.
- READING CONTACT:
  - POSITION: ACCORDING TO ISO 07816-2 C1-C8.
- CONTACT FORCE: 30-50 GRAM. (0.29~0.49 N)
- CARD INSERTION SPECIFICATION
  - A. CARD INSERTION DEPTH: 35.5 mm.
  - B. CARD THICKNESS=0.7-0.8 mm.
- RoHS COMPLIANCE

ORDER INFORMATION:

GT20-200175-X X  
 ① ②

- Contact Plated:
  - 1- Gold Flash
  - 2- 3u" Gold
  - 3- 5u" Gold
  - 5- 15u" Gold
  - 6- 30u" Gold
- Switch Contact Type:
  - 1-Normally Open
  - 2-Normally Close



RECOMMENDED P.C.B. LAYOUT  
 P.C.B THICKNESS=1.60mm  
 TOLERANCE ±0.05

GENERAL TOLERANCE	ANGLE TOLERANCE	DRAWN	DATE	
X ±	X° ±	Jesse	10/31/13'	
.X ± 0.38	.X° ±	DESIGN	DATE	TITLE: SMART CARD SOCKET Stand-off=3.30mm
.XX ± 0.25	.XX° ±	CHECKED	DATE	PART NUMBER: GT20-200175-XX
.XXX ± 0.15	.XXX° ±	APPROVED	DATE	DRAWING NO. GT20-200175
MATERIAL: SEE NOTES		SHEET 1 OF 1		SIZE A4 REV. D

NO	PART NAME	DESCRIPTION	Q'TY	MATERIAL	REMARK
1					