

1 2 3 4 5 6 7 8

A

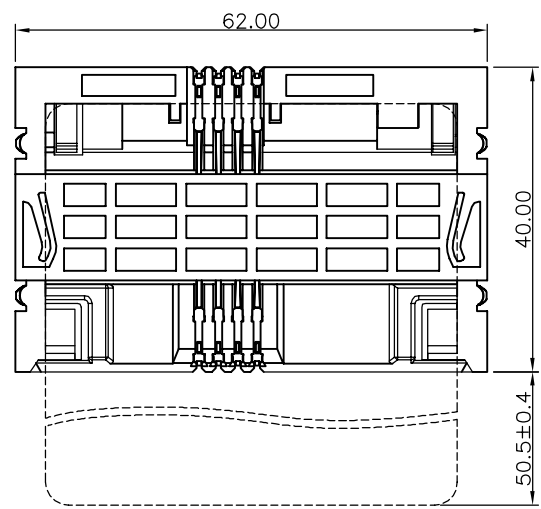
B

C

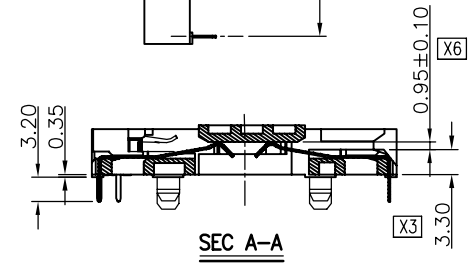
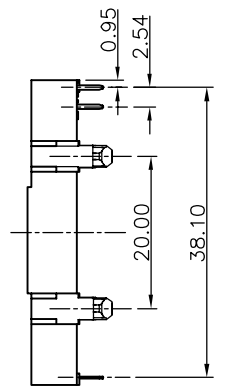
D

E

REV.	ECN. NO.	DESCRIPTION	ENG	DATE
X1		ISSUED	Jesse	03/05/12'
X2		UPDATE NOTES	Jesse	03/13/12'
X3		UPDATE DRAWING	Jesse	04/19/13'
X4		ADD R FILLET	Jesse	05/31/13'
X5		MODIFY TOLERANCE	Jesse	06/04/13'
X6		UPDATE DRAWING	Jesse	11/01/13'



THE LENGTH AFTER INSERT CARD



SEC A-A

NOTES:

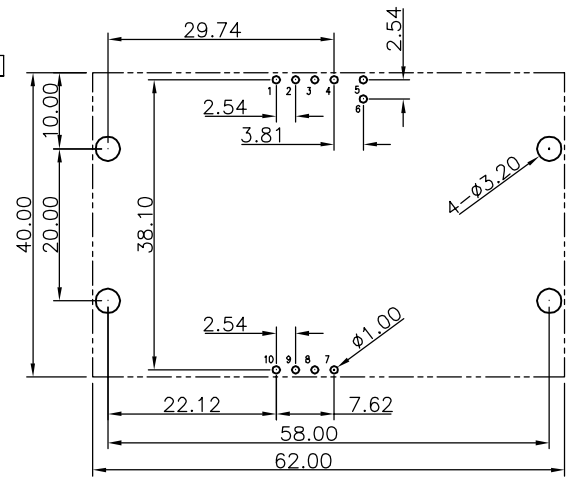
- MATERIAL AND FINISH:
 - A. HOUSING: PBT UL 94-V0 COLOR: BLACK.
 - X2 X3 B. CONTACT: BRASS.
GOLD PLATING ON CONTACT AREA
MATTE TIN ON SOLDER TAIL
30u" NICKEL UNDER-PLATED OVERALL.
 - X2 X3 C. SWITCH: BRASS.
GOLD FLASH ON CONTACT AREA
MATTE TIN ON SOLDER TAIL
30u" NICKEL UNDER-PLATED OVERALL.
- READING CONTACT:
POSITION: ACCORDING TO ISO 07816-2 C1-C8.
- X6 CONTACT FORCE: 30-50 GRAM (0.29-0.49 N).
- CARD INSERTION SPECIFICATION
 - A. CARD INSERTION DEPTH: 35.5 mm.
 - B. CARD THICKNESS=0.7-0.8 mm.
- RoHS COMPLIANCE

ORDER INFORMATION:

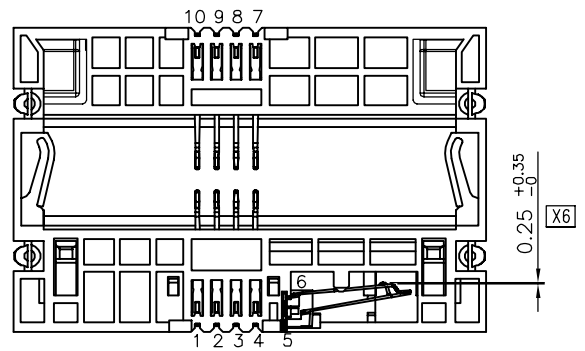
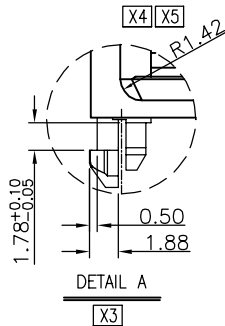
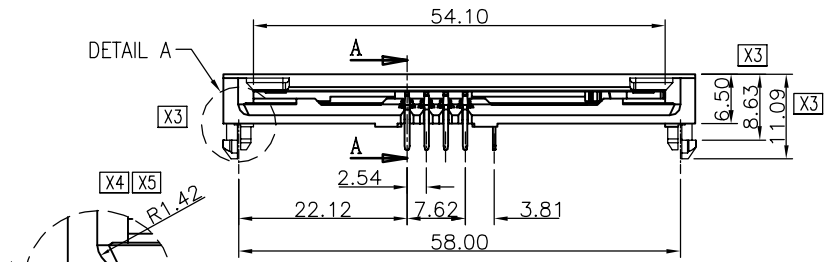
GT17-200136-X X
① ②

- Contact Plated:
 - 1- Gold Flash
 - 2- 3u" Gold
 - 3- 5u" Gold
 - 5- 15u" Gold
 - 6- 30u" Gold

- X3 2: Switch Contact Type:
 - 2-Normally Close



RECOMMENDED P.C.B. LAYOUT
P.C.B THICKNESS=1.60mm
TOLERANCE ±0.05



GENERAL TOLERANCE	ANGLE TOLERANCE	DRAWN	DATE	
X ±	X° ±	Jesse	11/01/13'	
.X ± 0.38	.X° ±	DESIGN	DATE	PART NUMBER: GT17-200136-XX
.XX ± 0.25	.XX° ±	CHECKED	DATE	DRAWING NO. GT17-200136
.XXX ± 0.15	.XXX° ±	APPROVED	DATE	SIZE A4 REV. X6
MATL SEE NOTES				
FINISH SEE NOTES				
SCALE <i>N/A</i>	UNIT <i>mm</i>			
SHEET 1 OF 1				

NO	PART NAME	DESCRIPTION	Q'TY	MATERIAL	REMARK
1					

1 2 3 4 5 6 7 8