

A

B

C

D

E

A

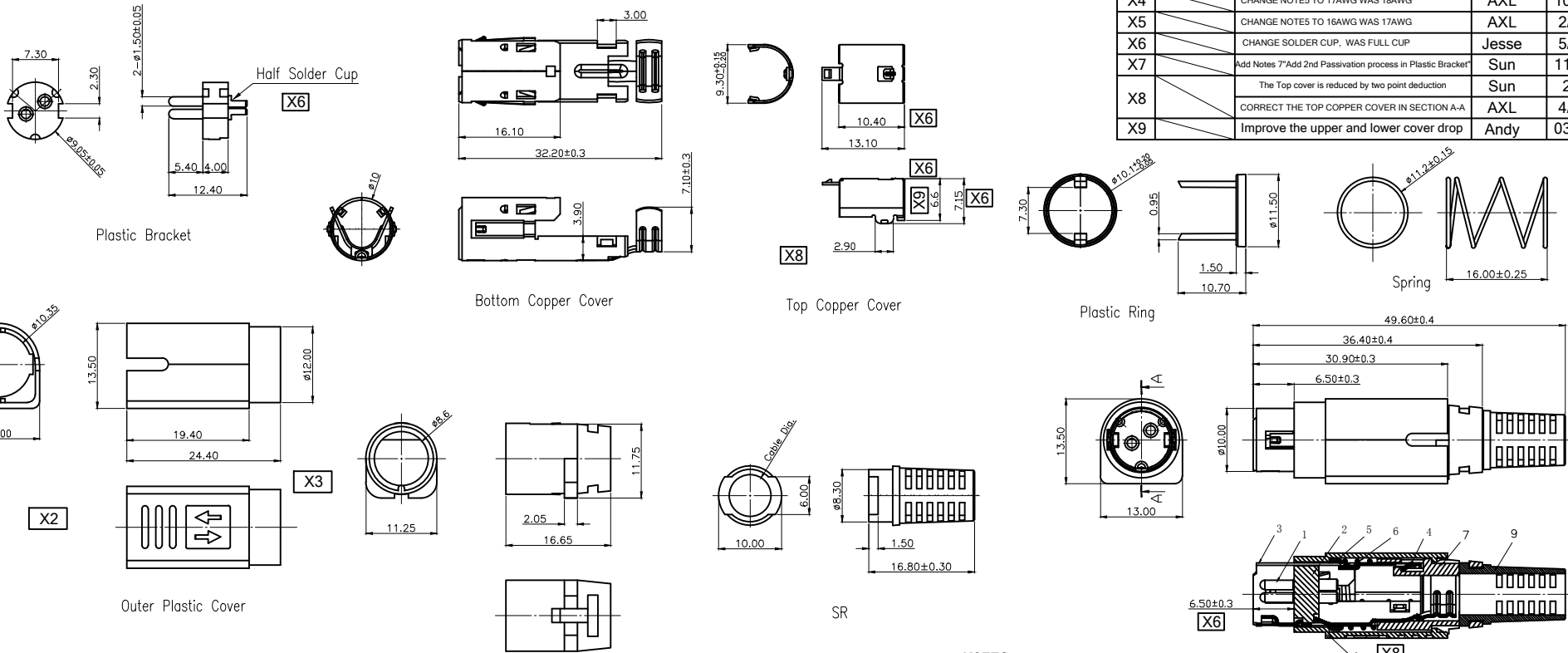
B

C

D

E

REV.	ECN. NO.	DESCRIPTION	ENG	DATE
X1		ISSUED	Kevin	07/27/11'
X2		REMOVE SINGLE ARROW MARK	Kevin	07/29/11'
X3		DIM. 22.90 MODIFY TO 24.40	Kevin	08/12/11'
X4		CHANGE NOTES TO 17AWG WAS 18AWG	AXL	10/11/11'
X5		CHANGE NOTES TO 16AWG WAS 17AWG	AXL	2/22/12'
X6		CHANGE SOLDER CUP, WAS FULL CUP	Jesse	5/24/12'
X7		Add Notes "Add 2nd Passivation process in Plastic Bracket"	Sun	11/20/15'
X8		The Top cover is reduced by two point deduction	Sun	2/1/16'
X9		CORRECT THE TOP COPPER COVER IN SECTION A-A	AXL	4/24/16'
X9		Improve the upper and lower cover drop	Andy	03/08/17'



ORDER INFORMATION:  
GT14-200196-X 2

1. CABLE DIAMETER OPTION:

CABLE Dia.	Part Number	CABLE Dia.	Part Number
ø4.0	GT14-200196-12	ø5.5	GT14-200196-42
ø4.4	GT14-200196-22	ø6.0	GT14-200196-52
ø5.0	GT14-200196-32	ø6.6	GT14-200196-62

2. MARKS

GT14-200196-X2: DOUBLE ARROWS

- NOTES:
1. RATING: PIN 1&2:DC20V 7.5A Max. SECTION: A-A
  2. CONTACT RESISTANCE:30mΩ Max.
  3. INSULATION RESISTANCE:DC 250V 50MΩ Min.
  4. DIELECTRIC WITHSTAND VOLTAGE:AC 250V 1minute.
  5. APPLIED CABLE SIZE:  
PIN 1&2:AWG #16 Max.
  6. MECHANICAL:  
1. INSERTION FORCE: 4.5kgf max.  
WITHDRAWAL FORCE: 1.0kgf min.  
2. DURABILITY: 5000 Cycles
  7. MANUFACTURING PROCESS ADD  
"ADD 2nd PASSIVATION PROCESS IN PLASTIC BARCKET"

1	Pin	2		ø1.5X12.4L, BRASS	Silver 30u" plating	
2	Plastic Bracket	1		PBT+30%GF, UL94V-0	COLOR BLACK	
3	Bottom copper cover	1		Brass, T=0.40±0.05mm	Ni 50u" plating	
4	Top copper cover	1		Brass, T=0.40±0.05mm	Ni 50u" plating	
5	Plastic Ring	1		POM	COLOR BLACK	
6	Spring	1		Piano Wire, ø0.60±0.10mm	30u" Zin Plating, BLACK	
7	Inner	1		PC, UL94V-0	COLOR BLACK	
8	cover	1		PA66+25%GF ,UL94V-0	COLOR BLACK	
9	SR	1		PVC, UL94V-0	COLOR BLACK	
ITEM	NAME	Q'TY	DESCRIPTION	MATERIAL	FINISH / COLOR	NOTE

GENERAL TOLERANCE X± 0.30 .X± 0.25 .XX± 0.20 .XXX±				ANGLE TOLERANCE X°± .X°± .XX°± .XXX°±		DRAWN Kevin 08/12/11'		DATE		PRELIMINARY NOT RELEASED	
MATERIAL SEE BOM				FINISH SEE BOM		DESIGN		DATE		PART NUMBER. GT14-200196-X2	
SCALE N/A				UNIT mm		APPROVED		DATE		DRAWING NO. GT14-200196	
SHEET 1 OF 1										SIZE A4	
										REV. X9	



2 PINS POWER PLUG